

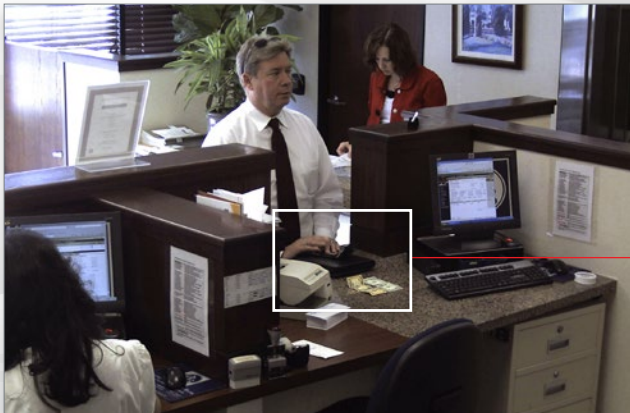
MegaVideo® G5 IP Megapixel Cameras

1.2–10MP H.264 True Day/Night Indoor Box-Style Compact IP Cameras with WDR (Wide Dynamic Range) and STELLAR™ (Spatio Temporal Low Light Architecture) Models

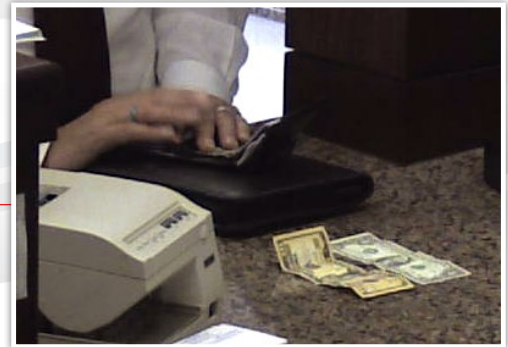


GEN5

ONVIF | S | PSIA



Wide Field of View



Zoom-In Detail

More Resolution and More Choices – MegaVideo® G5

The MegaVideo® G5 multi-megapixel, indoor compact camera series delivers 1.2-, 1080p, 3-, 5-, or 10-megapixel resolutions (lens sold separately). Regardless of time-of-day, this camera is ideal for applications with challenging lighting conditions. The series combines a day/night mechanical IR cut filter with an optional P-iris lens for precise, optimal image quality.

For applications with poor lighting conditions due to strong backlighting, reflections from wet flooring/puddles, or contrast due to fog, mist, or glare, optional wide dynamic range is available on some 1080p and 3MP models. Some 1080p models provide 30 images-per-second for optimum performance in fast action scenes such as casino and banking applications. For challenging low-light applications, the 1.2MP STELLAR™ model offers best-in-class light

sensitivity capturing details in extreme low-light (0.002 lux in monochrome) at an incredibly high frame rate of 37 frames per second.

The SD card slot supports up to 32GB of storage capacity for convenient onboard storage. Motorized remote focus/zoom lenses makes set-up and maintenance easy. The camera's power can be supplied via a Power-over-Ethernet compliant network cable connection or with power from a 12–48V DC/24V AC power supply. The camera's interface allows for an intuitive, fast, and easy configuration. The MegaVideo® G5 is ONVIF Profile S (Open Network Video Interface Forum) and PSIA (Physical Security Interoperability Alliance) compliant, providing interoperability between network video products regardless of manufacturer.



True Day/Night with IR Cut Filter



CorridorView™ with 90° Image Flip



SDHC Card Slot



Motorized Remote Focus/Zoom and Manual Lens Options and Housing Options



P-Iris Control for Best Depth of Field and Image Clarity



STELLAR™ Low Light Technology on 1.2MP Models



Wide Dynamic Range Available on Some 1080p and 3MP Models



Dual Mode: 1080p/10MP



Pixel Binning Mode on 3, 5, and 10MP Models

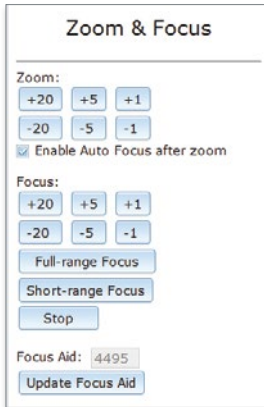


Casino Mode™ Maintains at Least 30fps on AV2215 Models



MegaVideo® G5 with Remote Focus/Zoom P-Iris Lens

Remote Focus/Zoom¹, with User-Friendly Web Interface

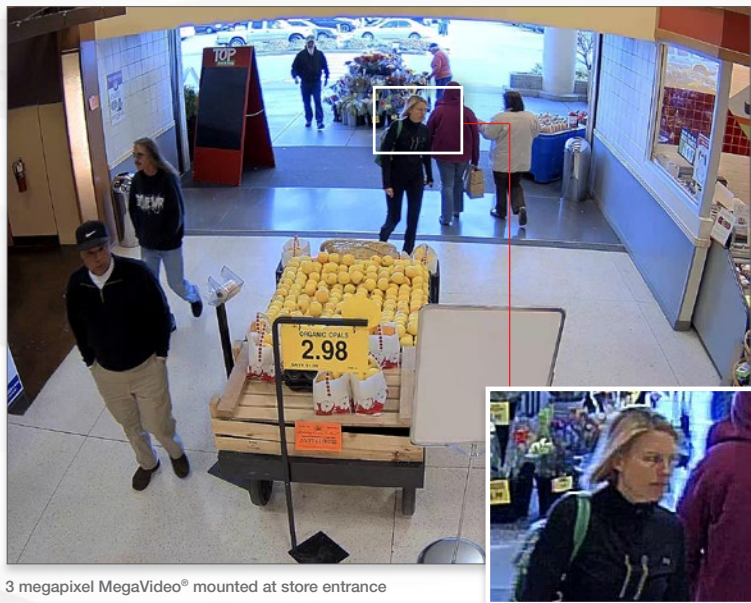


The MegaVideo® G5 features a P-iris motorized lens to adjust the zoom and easily focus the camera's sensor through the Web interface. Once mounted, the operator can quickly focus and position the camera remotely, eliminating the need to adjust the camera locally. The simplicity of just clicking “short range focus” or “full range focus” saves installers time and end users money—an easy return on investment.

P-Iris¹ Control for Image Clarity

MegaVideo® G5 IP megapixel cameras feature a precision iris or “P-iris” lens to ensure the best possible depth of field and image clarity for precise performance from the sensor. Short or full range focus scans analyze the local or full scene for an optimal focus position. The P-iris lens provides an automatic, precise iris control for applications with varying lighting conditions.

¹ Must use motorized P-iris lens for functionality



3 megapixel MegaVideo® mounted at store entrance

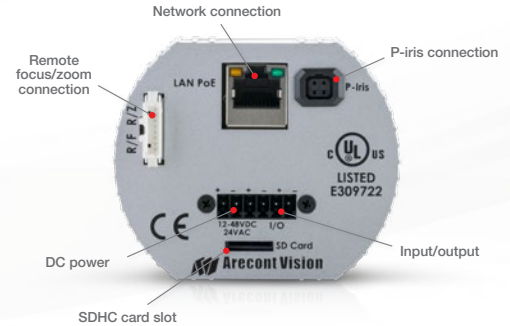
See Every Detail with Forensic Zooming

Arecont Vision megapixel cameras deliver outstanding resolution to capture every detail whether viewing live or recorded/archived video. With the ability to digitally Pan-Tilt-Zoom (PTZ) images, you can forensically zoom for license plate, face, and object details.

Optimizing Data Management

Multi-streaming enables the MegaVideo® G5 to deliver eight non-identical streams to facilitate bandwidth-efficient viewing and recording options as well as integration with third-party video management systems. While using efficient H.264 video compression to manage bandwidth and keep storage requirements low, the cameras deliver exceptional image quality with ultra high resolution.

Back Panel Connections



Features and Benefits

| Features | Benefits |
|---------------------------------------|--|
| Ultra High Resolution 1.2-10MP Models | Covers a large area for identifying objects at a great distance. Offers the level of detail perfect for a detailed and effective retrospective analysis. |
| True Day/Night | Delivers color images during the day and automatically switches to monochrome mode when the illumination level drops. |
| CorridorView™ | Allows the camera's image to be rotated 90 degrees to reduce capturing unnecessary data. This works great for narrow hallways where pixels are often wasted due to capturing the surrounding walls. |
| Privacy Masking | Protects areas for maintaining sensitive information. |
| Multi-Streaming | Provides eight non-identical streams for efficient viewing, recording, and integrating third-party video management systems. |
| ONVIF and PSIA conformance | Seamless integration with third-party products. |
| Motorized Remote Focus/Zoom* | Makes installation easier so the installer can accurately focus the camera remotely. |
| P-iris Control* | Optimizes the image for the best video clarity under different lighting conditions. |
| STELLAR™ Technology | STELLAR™ Low Light Technology reduces motion blur, noise and storage requirements. The technology enhances contrast and produces color imaging in near complete darkness on 1.2MP models. |
| True Wide Dynamic Range* | Captures all the important details in a scene with both bright and dark areas. |
| Dual Mode* | For added flexibility and efficiency, 10MP models have the ability to switch between 1080p and 10MP modes. |
| Pixel Binning* | Provides strong low light performance. |
| Non-integer Scaling* | Provides the ability to scale images to different resolutions down to 128x96. This flexibility allows users to tailor their system for their specific need; reducing system bandwidth and storage costs. |
| Casino Mode* | Guarantees continuous 30fps frame rate required by gaming industry regulations on 1080p models. |
| MicroSD card slot for edge recording | Provides an easy back-up or stand-alone solution for data storage. |

* Some models

Covering Wider Areas with Fewer Cameras



5 megapixel MegaVideo® in a pole-mounted HSG2 housing

With a diameter of only 3 inches (7.62 cm), the MegaVideo® G5 camera is about 70% smaller than traditional box-style cameras. These compact dimensions make this camera ideal for discrete indoor surveillance applications. For added versatility, the MegaVideo® G5 can be added to the Arecont Vision HSG2 bullet-style enclosure as well as D4SO dome enclosures for outdoor environments.

| LANE 1 | LANE 2 | LANE 3 | LANE 4 | LANE 5 | LANE 6 |
|--------|--------|--------|--------|--------|--------|
| VGA | | | | | |
| | 1.2MP | | | | |
| | | 2MP | | | |
| | | | 3MP | | |
| | | | | 5MP | |
| | | | | | 10MP |

In applications where large areas need to be secured, Arecont Vision® megapixel cameras provide maximum return on investment. As an example, if a VGA camera could cover one lane of traffic, a 10MP MegaVideo® G5 camera in an HSG2 bullet-style housing could cover up to 5.5 lanes at the same resolution.

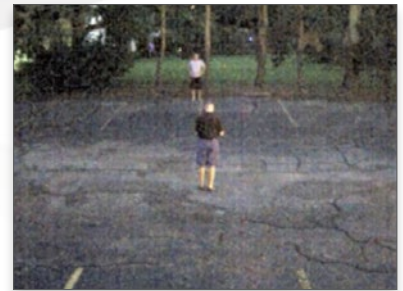
STELLAR™ Technology with Enhanced Low Light Performance

MegaVideo® G5 features a 1.2MP model with Spatio Temporal Low Light Architecture (STELLAR™) technology, which allows for color imaging in near complete darkness. Arecont Vision® STELLAR™ technology utilizes a patented algorithm that reduces noise, motion blur, bit rate and storage requirements. Along with adaptive contrast enhancement, MegaVideo® G5 with STELLAR™ has superior low light sensitivity, making it capable of covering areas where very little light is present.

In addition to STELLAR™ models, all MegaVideo® G5 camera models are equipped with True Day/Night operation, and MegaVideo® G5 cameras that are 3MP or higher include pixel binning to reduce noise.

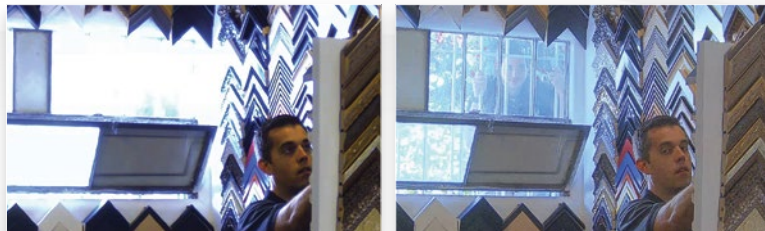


Color image without STELLAR™ at 0.02 Lux



Color image with STELLAR™ at 0.02 Lux

MegaDynamic® Wide Dynamic Range (WDR)



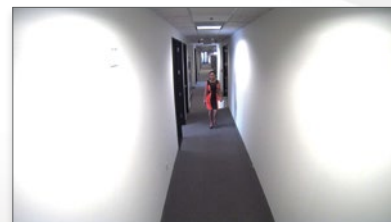
Megapixel image without WDR

Megapixel image with WDR

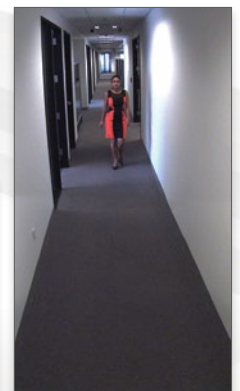
Users can achieve clear images in extreme lighting conditions with MegaVideo® G5 WDR cameras in resolutions of 1080p and 3MP. Wide Dynamic Range up to 100dB at full resolution balances light and dark areas in the same scene, such as in the lobby of an office building with large windows, the loading dock at a distribution facility or many retail environments.

CorridorView™

With CorridorView™, MegaVideo® G5 can rotate or flip pixels in 90° increments. This works great for narrow hallways where pixels are often wasted capturing the surrounding walls.



Standard view



CorridorView™

Model Comparison



| Model | Resolution | | Minimum Illumination | Max Frame Rate @ Full Resolution | H.264/MJPEG | True Day/Night | P-Iris Compatible | STELLAR™ | True WDR | Binning Mode | Casino Mode™ |
|-------------|------------|-------------|---|----------------------------------|-------------|----------------|-------------------|----------|----------|--------------|--------------|
| AV1215PM-S | 1.2MP | 1280 x 1024 | Color: 0.02 Lux B/W: 0.002 Lux, IR Sensitive | 37fps | • | • | • | • | | | |
| AV2215PM-S | 1080p | 1920 x 1080 | Color: 0.1 Lux B/W: 0.02 Lux, IR Sensitive | 30fps | • | • | • | | | | • |
| AV2216PM-S | 1080p | 1920 x 1080 | Color: 0.3 Lux B/W: 0.02 Lux, IR Sensitive | 30fps | • | • | • | • | | | |
| AV3215PM-S | 3MP | 2048 x 1536 | Color: 0.1 Lux B/W: 0.02 Lux, IR Sensitive | 21fps | • | • | • | | • | • | |
| AV3216PM-S | 3MP | 2048 x 1536 | Color: 0.3 Lux B/W: 0.02 Lux, IR Sensitive | 21fps | • | • | • | • | • | • | |
| AV5215PM-S | 5MP | 2592 x 1944 | Color: 0.3 Lux B/W: 0.02 Lux, IR Sensitive | 14fps | • | • | • | | | • | |
| AV10215PM-S | 10MP | 3648 x 2752 | Color: 0.42 Lux B/W: 0.03 Lux, IR Sensitive | 7fps | • | • | • | | | • | |

Configuration

Housings (Sold Separately)

Lens Options (Sold Separately)



PM-S



HSG2-WMT

HSG2 with HSG2-WMT
Outdoor IP67 Housing
with Heater and Dual Fans



D4SO
Indoor/Outdoor 4" IP66, IK-10
Surface Mount Dome

| Motorized P-Iris | MPL2.8-8.5MPI ¹ (2.8-8.5mm) | 1.2MP | 1080p | 3MP |
|--------------------|--|-------|-------|----------|
| | MPL3.3-8.5MPI (3.3-8.5mm) | | | 5MP |
| Manual Vari-Focal | MPL4-10 (4-10mm) | 1.2MP | 1080p | 3MP 5MP |
| | MPL4-12 (4-12mm) | 1.2MP | 1080p | 3MP 5MP |
| | MPL8-16 (8-16mm) | 1.2MP | 1080p | 3MP 5MP |
| | MPL12-40 (12-40mm) | 1.2MP | 1080p | 3MP 5MP |
| | MPL33-12A ¹ (3.3-10.5mm) | 1.2MP | 1080p | 3MP 5MP |
| | UHD45-10 (4.5-10mm) | | | 5MP 10MP |
| Manual Fixed Focal | MPL1.55 (1.55mm) | 1.2MP | 1080p | 3MP 5MP |
| | MPL3.5 ¹ (3.5mm) | 1.2MP | 1080p | 3MP 5MP |
| | MPL4.0 (4mm) | 1.2MP | 1080p | 3MP 5MP |
| | MPL6.0 (6mm) | 1.2MP | 1080p | 3MP 5MP |
| | MPL6.2 ¹ (6.2mm) | 1.2MP | 1080p | 3MP 5MP |
| | MPL8.0 (7.8mm) | 1.2MP | 1080p | 3MP 5MP |
| | UHD7.2 (7.2mm) | | | 5MP 10MP |
| | JHF25M-5MP (25mm) | | | 5MP 10MP |
| | JHF35M-5MP (35mm) | | | 5MP 10MP |

¹ Recommended for WDR models



Global Sales and Support

Arecont Vision is the leading manufacturer of high-performance megapixel IP cameras and associated software.

Americas

Los Angeles, CA, USA
Arecont Vision, LLC. Headquarters
425 E. Colorado St., 7th Floor
Glendale, CA 91205, USA

Phone: +1.818.937.0700
Toll Free: 877.CAMERA.8
Fax: +1.818.937.0464

Sales

Phone: +1.818.937.0700 x 3
Email: avsales@arecontvision.com

Support

Phone: +1.818.937.0700 x 1
Email: support@arecontvision.com

Latin America

Email: latam.sales@arecontvision.com

EMEA

Düsseldorf, Germany
Phone: +49.69.6953.4600
Email: europe.sales@arecontvision.com

Moscow, Russia
CJSC Arecont Vision
Phone: +7.495.649.0577
Fax: +7.495.221.5227
Email: info@arecontvision.ru

Middle East

Email: mena.sales@arecontvision.com

Africa

Email: africa.sales@arecontvision.com

APAC

China
Phone: +86.180.0179.1799
Alt. Phone: +1.818.937.0700 x 3
Fax: +1.818.649.3404
Email: apac.sales@arecontvision.com

