

# MicroDome® G2 IP Megapixel Cameras

1.2–5MP H.264 All-in-One Ultra Low Profile Remote Focus True Day/Night Indoor/Outdoor Dome IP Cameras with WDR (Wide Dynamic Range) Models



Wide Field of View



Zoom-In Detail

## Low Profile All-in-One Dome Cameras with Integrated Remote Focus Lens and Optional WDR

The MicroDome G2 multi-megapixel camera series delivers 1.2-, 1080p, 3-, or 5-megapixel resolutions. These true day/night cameras are available with a choice of lenses 2.8mm, 4mm, 6mm, 8mm, 12mm, and 16mm options. With a day/night mechanical IR cut filter this camera is ideal for applications with challenging lighting conditions, regardless the time of day.

The MicroDome G2 megapixel IP camera series is available in an indoor, in-ceiling housing or in a surface mount IP66 rated version for indoor and outdoor applications. Surface and flush mount models feature a vandal resistant, IK-10 rated cast-aluminum housing with a polycarbonate bubble making it capable of withstanding the equivalent of 55 kg (120 lbs) of force.

MicroDome G2 megapixel IP cameras deliver professional surveillance, with ease of installation and set-up, for a variety of network surveillance requirements. The remote focus module allows users to simply click “Short-range Focus” or “Full-range Focus” saving installers time and end users money—an easy return on investment. The three-axis lens adjustment

provides users with more camera placement options, allowing the cameras to be easily mounted on a wall or ceiling so they can pan, tilt, and rotate the lens in a variety of directions for a precise field of view. An innovative spring arm design makes in-ceiling F-model installations a snap: simply slide the camera through the hole and secure the magnetized cover ring with a single screw. No additional hardware is required.

For challenging low-light applications, the 1.2MP model features NightView™, making it capable of covering areas where very little light is present. For applications with strong backlighting, reflections from wet flooring/puddles, or contrast due to fog, mist, or glare, optional wide dynamic range is available on some 1080p and 3MP models.

The MicroDome G2 is ONVIF Profile S (Open Network Video Interface Forum) and PSIA (Physical Security Interoperability Alliance) compliant, providing interoperability between network video products regardless of manufacturer.

- True Day/Night with Mechanical IR Cut Filter
- CorridorView™ with 90° Image Flip
- Interchangeable Lenses with Remote Focus
- NightView™ on 1.2MP Models
- Wide Dynamic Range Available on AV2556 and AV3556 Models
- Pixel Binning Mode on 3 and 5MP Models
- All-in-One PoE and Integrated Lens
- Ultra Low Profile Design
- 3-Axis Gimbal
- Impact / Weather Resistant IK-10 and IP66 Rated (-S Models)
- Integrated Microphone (-F Models)

## Remote Focus with User-Friendly Web Interface

**Focus**

---

Focus:

+20 +5 +1

-20 -5 -1

Full-range Focus

Short-range Focus

Stop

Focus Aid:

Update Focus Aid

For easy installation, MicroDome G2 can be installed without locally adjusting the field of view or focus. Remote focus can be controlled through the camera webpage. Just click “Short-range Focus” or “Full-range Focus” to get a clear image through the IK-10 rated dome bubble. Short or full range focus scan functions analyze the local or full scene to determine the best focus for the chosen field of view.

### Additional Benefits Include:

- Fine tuning for a better image after installation
- Quicker installation
- Ability to choose wide or telephoto depending on application requirements

## Easily Adjustable 3-Axis Gimbal

The three-axis lens adjustment allows cameras to be mounted on a wall or ceiling so users can easily pan, tilt, and rotate the lens in a variety of directions for a precise field of view.



Wide Field of View



Digital Zoom Field of View

## Forensic Zooming

Arecont Vision MicroDome G2 megapixel cameras deliver outstanding resolution to capture significant detail whether viewing live or recorded/archived video. With the ability to digitally Pan-Tilt-Zoom (PTZ) images, you can view the details you need to see at any time, such as license plates, faces and other objects of interest. The superior resolution of the MicroDome G2 megapixel cameras, along with the multiple lens options available (see lens chart) offer users a variety of fields of view. This makes it possible for the MicroDome G2 to do the work of multiple conventional cameras and provide critical forensic information—all without the need and associated expense of system operators having to “catch” activities of interest as they occur.

## Features and Benefits

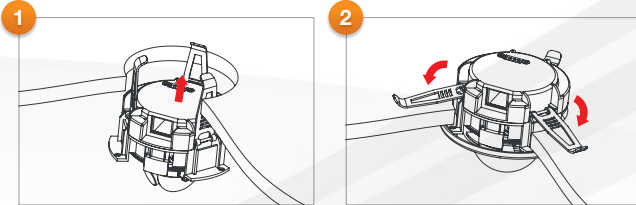
Features	Benefits
High Resolution 1.2-5MP Models	Covers a large area for identifying objects at a great distance. Offers the level of detail perfect for a detailed and effective retrospective analysis.
True Day/Night	Delivers color images during the day and automatically switches to monochrome mode when the illumination level drops.
CorridorView™	Allows the camera's image to be rotated 90 degrees to reduce capturing unnecessary data. This works great for narrow hallways where pixels are often wasted due to capturing the surrounding walls.
Remote Focus Module	Makes installation easier so the installer can accurately focus the camera remotely.
NightView™*	Superior low light sensitivity, making it capable of covering areas where very little light is present
True Wide Dynamic Range*	Captures all the important details in a scene with both bright and dark areas.
Pixel Binning*	Provides increased sensitivity for strong low light performance.
Casino Mode™*	Guarantees continuous 30fps frame rate required by gaming industry regulations on 1080p models.
Privacy Masking	Protects areas for maintaining sensitive information.
Multi-Streaming	Provides eight non-identical streams for efficient viewing, recording, and integrating third-party video management systems.
ONVIF and PSIA conformance	Seamless integration with third-party products.

\* Select models



## Easy Installation with **MicroDome® G2 Flush Mount**

MicroDome G2 incorporates an innovative spring arm design meant for simple installation into drop ceilings with no external hardware required. Simply cut a hole in the ceiling and the MicroDome G2 pops into place, securing itself with no fasteners to contend with. The MicroDome G2 is a total Power over Ethernet (PoE) solution eliminating the need for separate power cables.



## Outdoor-Ready and Vandal-Resistant with **MicroDome G2 Surface Mount**

Install the MicroDome G2 camera in the surface mount configuration with confidence both indoors and outdoors. Small but tough, the MicroDome G2 Surface Mount camera is IP66 environmentally-rated and IK-10 impact-resistant. The camera can withstand dust and water ingress as well as forceful blows and still stay on duty protecting your environment with detailed megapixel images.

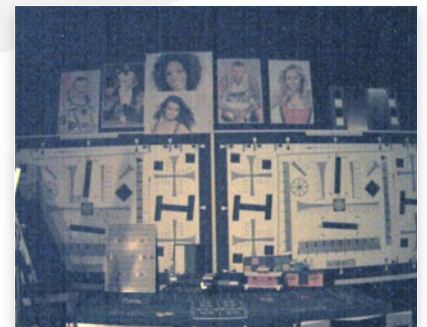
## NightView™ for Enhanced Low Light Performance

MicroDome G2 features a 1.2MP model with NightView technology. NightView has superior low light sensitivity, making it capable of covering areas where very little light is present.

In addition to NightView models, all MicroDome G2 camera models are equipped with True Day/Night operation, and MicroDome G2 cameras that are 3MP or higher include pixel binning to increase sensitivity.



Color Image without NightView Technology at .02 Lux



Color Image with NightView Technology at .02 Lux

## **MegaDynamic® Wide Dynamic Range (WDR)**



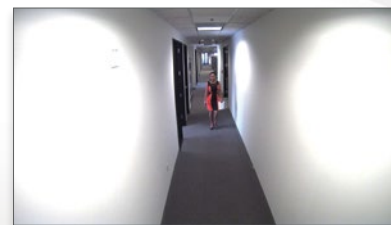
Megapixel image without WDR

Megapixel image with WDR

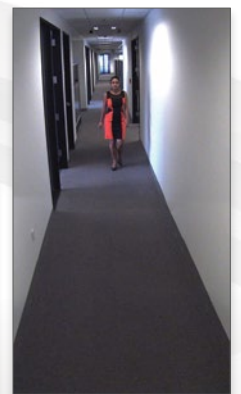
Users can achieve clear images in extreme lighting conditions with MicroDome G2 True WDR cameras in resolutions of 1080p and 3MP. Wide Dynamic Range up to 100dB at full resolution balances light and dark areas in the same scene, such as in the lobby of an office building with large windows, or the loading dock at a distribution facility or in many retail environments.

## CorridorView™

With CorridorView, MicroDome G2 can rotate or flip pixels in 90° increments. This works great for narrow hallways where pixels are often wasted capturing the surrounding walls.



Standard view



CorridorView

## Model Comparison

Model	Resolution		Minimum Illumination	Max Frame Rate @ Full Resolution	H.264/MJPEG	True Day/Night	True WDR	Binning Mode	Casino Mode™
AV1555DN	1.2MP	1280 x 960	Color: 0.03 Lux B/W: 0.003 Lux, IR Sensitive	37fps	•	•			
AV2555DN	1080p	1920 x 1080	Color: 0.2 Lux B/W: 0.02 Lux, IR Sensitive	30fps	•	•		•	
AV2556DN	1080p	1920 x 1080	Color: 0.2 Lux B/W: 0.02 Lux, IR Sensitive	30fps	•	•	•		
AV3555DN	3MP	2048 x 1536	Color (Non-Binning): 0.2 Lux Color (Binning): 0.1 Lux B/W: 0.02 Lux, IR Sensitive	21fps	•	•		•	
AV3556DN	3MP	2048 x 1536	Color (Non-Binning): 0.2 Lux Color (Binning): 0.1 Lux B/W: 0.02 Lux, IR Sensitive	21fps	•	•	•	•	
AV5555DN	5MP	2592 x 1944	Color (Non-Binning): 0.3 Lux Color (Binning): 0.15 Lux B/W: 0.02 Lux, IR Sensitive	14fps	•	•		•	

## Configurations

(Example: AV2556DN-F-NL)



## Lens Options

Focal Length		2.1mm	2.8mm	4mm	6mm	8mm	12mm	16mm
F Stop		F1.8	F1.8	F1.6	F1.6	F1.6	F1.6	F1.6
Horizontal FOV	1.2MP	130°	95°	67°	46°	35°	23°	17°
	1080p	113.1°	83°	59°	40°	30°	20°	15°
	1080p WDR	113.1°	83°	59°	40°	30°	20°	15°
	3MP	121.4°	89°	63°	43°	33°	22°	16°
	3MP WDR	121.4°	89°	63°	43°	33°	22°	16°
	5MP	-	113°	80°	56°	42°	28°	20°
Option		Ordered Separately	Standard*	Ordered Separately	Ordered Separately	Ordered Separately	Ordered Separately	Ordered Separately
Part Number		MPM2.1	MPM2.8A	MPM4.0A	MPM6.0	MPM8.0	MPM12.0A	MPM16.0

## Accessories\*\* (Sold Separately)



\* Except for -NL Models  
\*\* For -S Models only



## Global Sales and Support

Arecont Vision is the leading manufacturer of high-performance megapixel IP cameras and associated software.

### Americas

**Los Angeles, CA, USA**  
Arecont Vision, LLC. Headquarters  
425 E. Colorado St., 7th Floor  
Glendale, CA 91205, USA

Phone: +1.818.937.0700  
Toll Free: 877.CAMERA.8  
Fax: +1.818.937.0464

#### Sales

Phone: +1.818.937.0700 x 3  
Email: avsales@arecontvision.com

#### Support

Phone: +1.818.937.0700 x 1  
Email: support@arecontvision.com

#### Latin America

Email: latam.sales@arecontvision.com

### EMEA

**Düsseldorf, Germany**  
Phone: +49.69.6953.4600  
Email: europe.sales@arecontvision.com

**Moscow, Russia**  
CJSC Arecont Vision  
Phone: +7.495.649.0577  
Fax: +7.495.221.5227  
Email: info@arecontvision.ru

#### Middle East

Email: mena.sales@arecontvision.com

#### Africa

Email: africa.sales@arecontvision.com

### APAC

**China**  
Phone: +86.180.0179.1799  
Alt. Phone: +1.818.937.0700 x 3  
Fax: +1.818.649.3404  
Email: apac.sales@arecontvision.com

