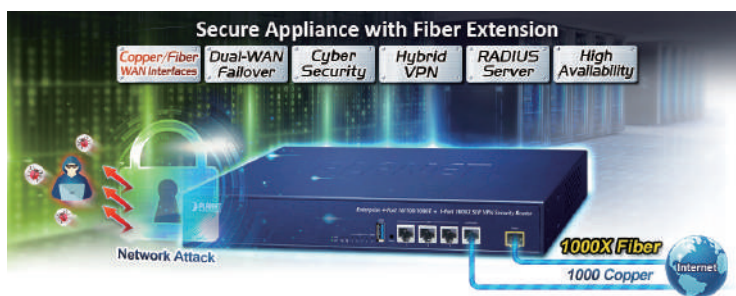


Enterprise 4-Port 10/100/1000T + 1-Port 1000X SFP VPN Security Router



Flexible VPN Security Solution with Fiber Capability

The innovation of the Internet has created tremendous worldwide opportunities for e-business and information sharing. It has become essential for businesses to focus more on network security issues. The demand for information security and wireless connection has become the primary concern for the enterprises. To fulfill this demand, PLANET has launched the all-in-one VR-300F and VR-300FP VPN Security Routers that carry several main categories across your network security deployments: **copper/fiber WAN interface, cybersecurity, SPI firewall security protection, policy auditing (content filtering, VPN tunnel and MAC/IP filtering), AP controller, captive portal, RADIUS and easy management (Setup Wizard, DHCP Server and Dashboard)**. Furthermore, its Dual-WAN Failover, Outbound Load Balance and **High-Availability** features can improve the network efficiency while the web-based interface provides friendly and consistent user experience.



Flexible WAN interface Enables Extension of Network Deployment

The VR-300F and VR-300FP provide both copper and fiber connectors for WAN interface. With one SFP slot, it supports fiber extension for FTTX application. It allows the administrator to flexibly choose the suitable SFP transceiver according to the transmission distance required to extend the network efficiently. The distance can be extended from 550 meters to 2 kilometers (multi-mode fiber) and 10/20/30/40/50/60/70/120 kilometers (single-mode fiber or WDM fiber). They are well suited for applications to uplink to backbone switch and monitoring center in long distance.

Highlights

- Dual-WAN failover and Dual-WAN load balancing
- One 1000BASE-X SFP slot for WAN interface
- SSL VPN and robust hybrid VPN (IPSec/PPTP/L2TP over IPSec)
- Stateful Packet Inspection (SPI) firewall and content filtering
- Blocks DoS/DDOS attack, port range forwarding
- High Availability, AP Controller, Captive Portal and RADIUS
- IPv6, SNMP, PLANET DDNS and Universal Network Management System
- Compliant with the IEEE 802.3at PoE+ with PD alive check/schedule management (VR-300FP)

Hardware

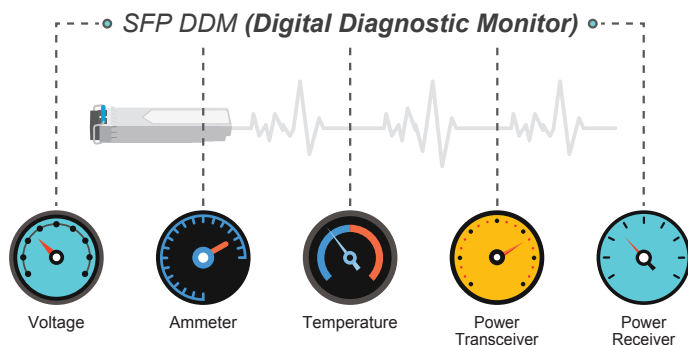
- 4 10/100/1000BASE-T RJ45 ports (VR-300F)
- 4 10/100/1000BASE-T RJ45 ports with 4-port IEEE 802.3at PoE+ injector function (VR-300FP)
- 1 1000BASE-X mini-GBIC/SFP slot
- 1 undefined Ethernet port (LAN/WAN) for Dual-WAN function
- 1 USB 3.0 port for system configuration backup and restore
- Reset button and fanless design
- Desktop installation or rack mounting

Power over Ethernet (VR-300FP)

- Complies with IEEE 802.3at Power over Ethernet Plus, end-span PSE
- Backward compatible with IEEE 802.3af Power over Ethernet
- Up to 4 ports of IEEE 802.3af / 802.3at devices powered
- Supports PoE power up to 36 watts for each PoE port
- Auto detects powered device (PD)
- Circuit protection prevents power interference between ports
- PoE management
 - Total PoE power budget control
 - Per port PoE function enable/disable
 - PoE port power feeding priority
 - Per PoE port power limitation
 - PD classification detection
 - PD alive check

Intelligent SFP Diagnosis Mechanism

The VR-300F and VR-300FP support SFP-DDM (digital diagnostic monitor) function that greatly helps network administrator to easily monitor real-time parameters of the SFP, such as optical output power, optical input power, temperature, laser bias current, and transceiver supply voltage.



Built-in Unique PoE Functions for Powered Devices Management

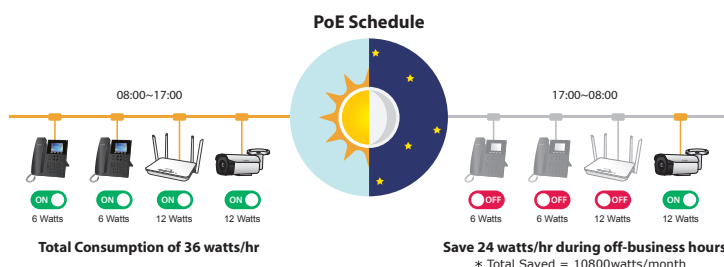
The VR-300FP is capable of having a maximum of up to 120 watts of power output and can deliver up to 36W for each port. It also features the following special PoE management functions:

PoE Usage Monitoring

With PoE usage monitoring, it can show the PoE loading of each port, total PoE power usage and system status, such as overload, low voltage, over voltage and high temperature. User can obtain detailed information about the real-time PoE working condition of the VR-300FP directly.

PoE Schedule

Under the trend of energy savings worldwide and contributing to environmental protection, the VR-300FP can effectively control the power supply besides its capability of giving high watts power. The "PoE schedule" function helps you to enable or disable PoE power feeding for each PoE port during specified time intervals and it is a powerful function to help SMBs or enterprises save power and budget. It also increases security by powering off PDs that should not be in use during non-business hours.



Scheduled Power Recycling

The VR-300FP allows each of the connected PoE IP cameras or PoE wireless access points to reboot at a specific time each week. Therefore, it will reduce the chance of IP camera or AP crash resulting from buffer overflow.

IP Routing Feature

- Static Route
- Dynamic Route
- OSPF

Firewall Security

- Cybersecurity
- Stateful Packet Inspection (SPI) firewall
- Blocks DoS/DDoS attack
- Content Filtering
- MAC Filtering and IP Filtering
- NAT ALGs (Application Layer Gateway)
- Blocks SYN/ICMP Flooding

VPN Features

- IPSec/Remote Server (Net-to-Net, Host-to-Net), GRE, PPTP Server, L2TP Server, SSL Server/Client (Open VPN)
- Max. Connection Tunnel Entries: 60 VPN tunnels,
- Encryption methods: DES, 3DES, AES, AES-128/192/256
- Authentication methods: MD5, SHA-1, SHA-256, SHA-384, SHA-512

Networking

- Outbound load balancing
- Failover for dual-WAN
- High Availability
- Captive Portal
- RADIUS Server/Client
- Static IP/PPPoE/DHCP client for WAN
- DHCP server/NTP client for LAN
- Protocols: TCP/IP, UDP, ARP, IPv4, IPv6
- Port forwarding, QoS, DMZ, IGMP, UPnP, SNMPv1,v2c, v3
- MAC address clone
- DDNS: PLANET DDNS, Easy DDNS, DynDNS and No-IP

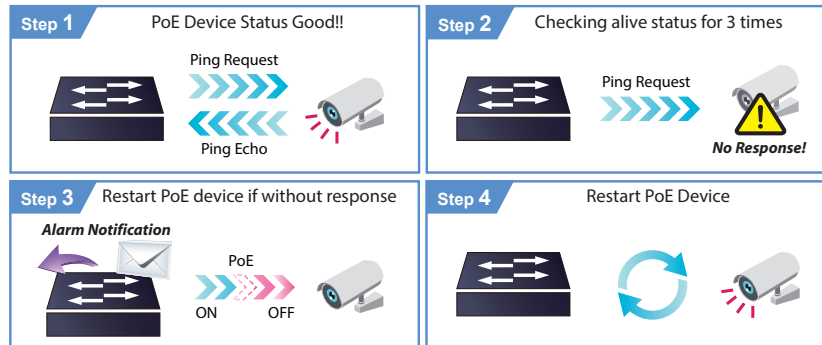
Others

- Setup wizard
- Dashboard for real-time system overview
- SFP-DDM (Digital Diagnostic Monitor)
- Supported access by HTTP or HTTPS
- Auto reboot
- PLANET NMS System and Smart Discovery Utility for deployment management
- Planet CloudViewer App for real-time monitoring

PD Alive Check

The VR-300FP can be configured to monitor connected PD status in real time via ping action. Once the PD stops working and responding, the VR-300FP will resume the PoE port power and bring the PD back to work. It will greatly enhance the network reliability through the PoE port resetting the PD's power source and reducing administrator management burden.

PD Alive Check



Wi-Fi Deployments and Authentication with Simplified Management

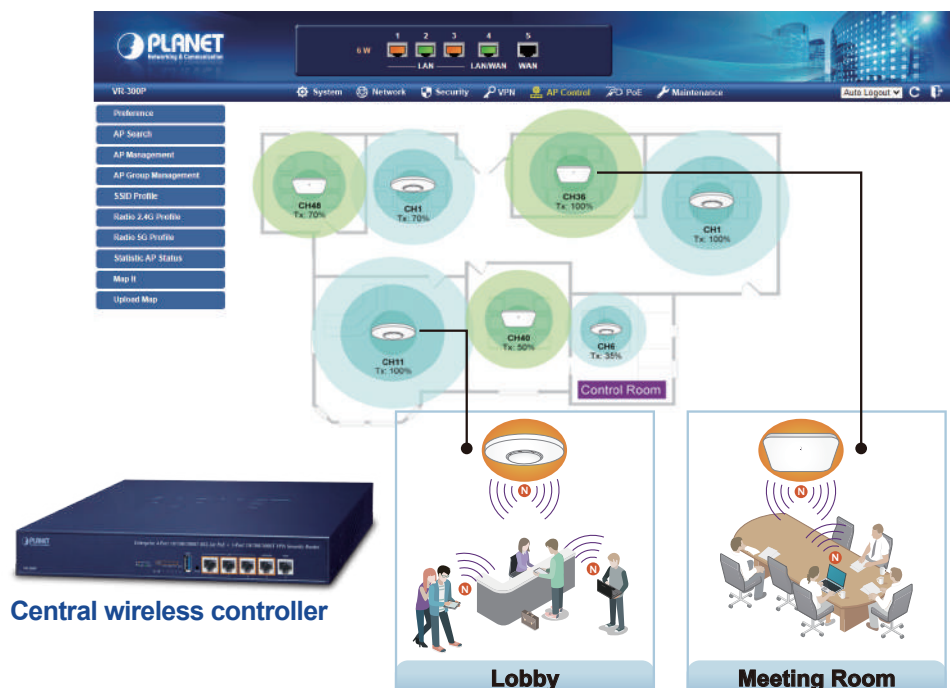
The VR-300F and VR-300FP provide a built-in AP Controller, Captive Portal, RADIUS and a DHCP server to facilitate small and medium businesses to deploy secure employee and guest access services without any additional server. The VR-300F and VR-300FP can offer a secure Wi-Fi network with easy installation for your business.

Captive Portal



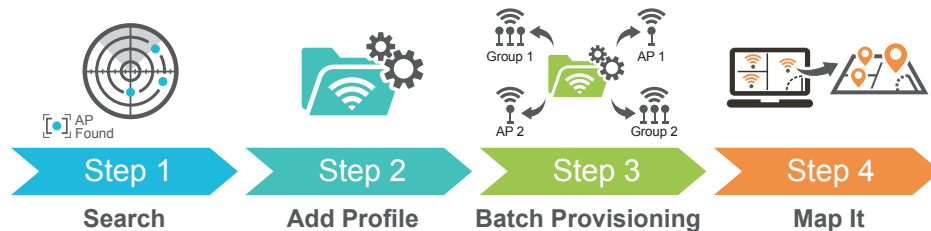
Centralized Remote Control of Managed APs*

The VR-300F and VR-300FP provide centralized management of PLANET Smart AP series via a user-friendly Web GUI. It's easy to configure AP for the wireless SSID, radio band and security settings. With a four-step configuration process, different purposes of wireless profiles can be simultaneously delivered to multiple APs or AP groups to minimize deployment time, effort and cost.



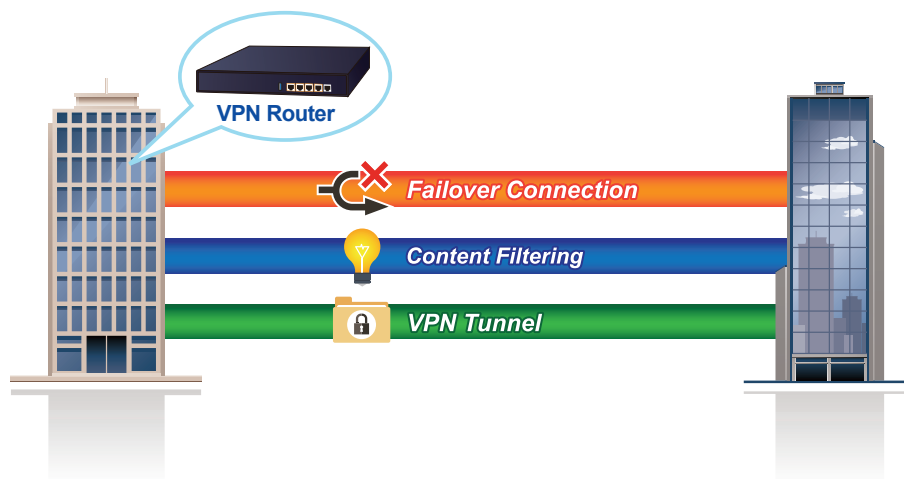
For example, to configure multiple Smart APs of the same model, the VR-300F and VR-300FP allow clustering them to a managed group for unified management. According to requirements, wireless APs can be flexibly expanded or removed from a wireless AP group at any time. The AP cluster benefits bulk provision and bulk firmware upgrade through single entry point instead of having to configure settings in each of them separately.

Simplified Cluster Management with 4 Steps



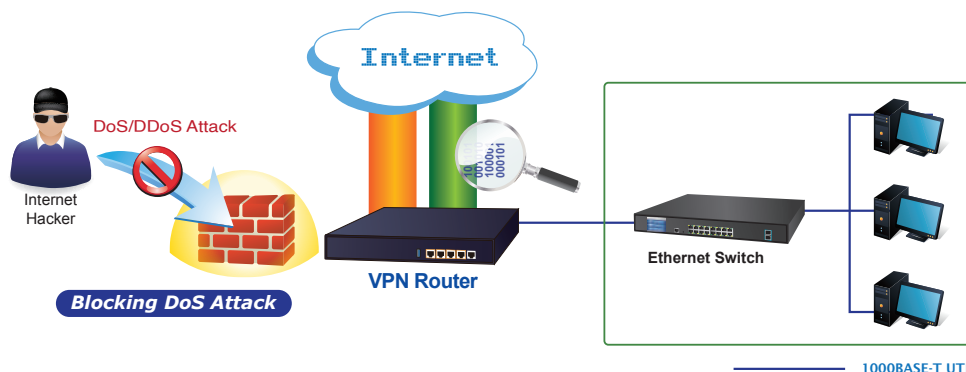
Ideal High-Availability VPN Security Router Solution for SMBs

The VR-300F and VR-300FP provide complete data security and privacy for accessing and exchanging the most sensitive data, built-in IPSec VPN function with DES/3DES/AES encryption and MD5/SHA-1/SHA-256/SHA-384/SHA-512 authentication, and GRE, SSL, PPTP and L2TP server mechanism. The full VPN capability in the VR-300FP makes the connection secure, more flexible, and more capable.



Excellent Ability in Threat Defense

The VR-300F and VR-300FP are built-in SPI (stateful packet inspection) firewall and DoS/DDoS attack mitigation functions provide high efficiency and extensive protection for your network. Thus, virtual server and DMZ functions can let you set up servers in the Intranet and still provide services to the Internet users.



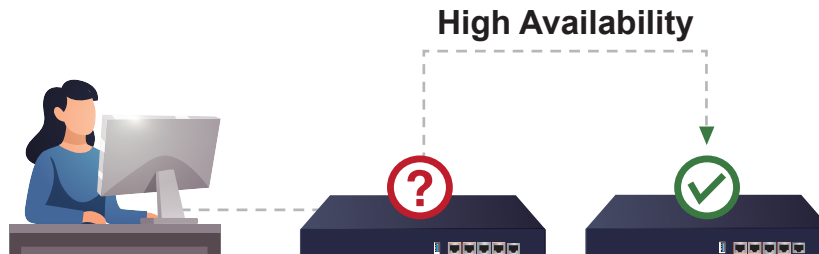
Cybersecurity Network Solution to Minimize Security Risks

The cybersecurity feature included to protect the switch management in a mission-critical network virtually needs no effort and cost to install. For efficient management, the VR-300F and VR-300FP are equipped with HTTPS web and SNMP management interfaces. With the built-in web-based management interface, the VR-300F and VR-300FP offer an easy-to-use, platform independent management and configuration facility. The VR-300F and VR-300FP support SNMP and it can be managed via any management software based on the standard SNMP protocol.

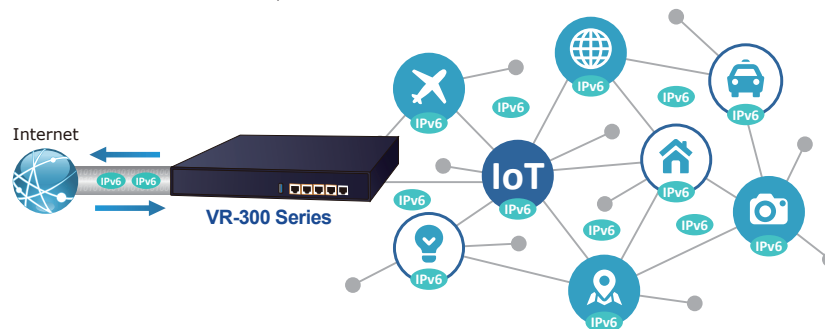
Applications

Improving Network Efficiency

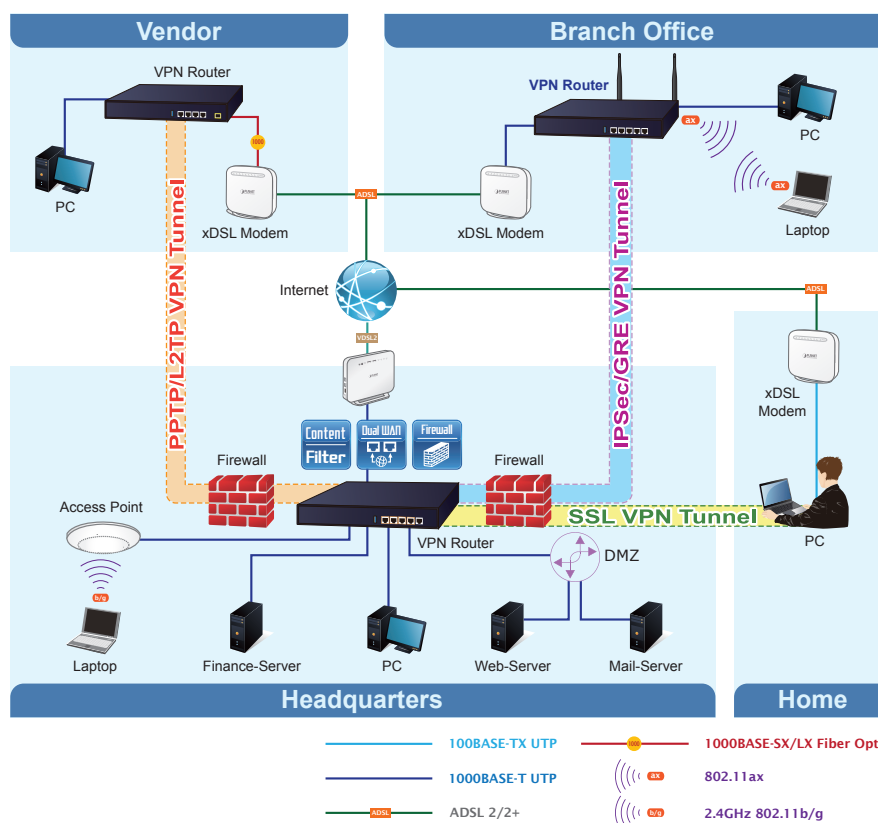
It is applicable to the small-scale sector (from 60 to 100 people), using a 13-inch desktop design, with five Gigabit ports (WAN/LAN). It provides higher performance with all Gigabit Ethernet interfaces which offer faster speeds for your network applications. The Gigabit user-defined interfaces flexibly fulfill the network requirement nowadays, and the High-Availability and Dual-WAN interfaces enable the VR-300F and VR-300FP to support outbound load balancing and WAN fail-over features.



Furthermore, the VR-300F and VR-300FP can connect dual IPv4/v6 WANs with up to two different ISPs and supports many popular security features including Content Filtering to block specific URL feature that can automatically resolve the IP address corresponding to all. Users' network can be easily managed by just typing the URL of the websites like Facebook, YouTube and Yahoo.



The VR-300F and VR-300FP both have link redundancy, MAC/IP filtering, outbound load balancing, QoS and many more functions to make the entire network system better. It creates a stable and qualified VPN security connection for many important applications such as VoIP, video conferencing and data transmission. The VR-300F's and VR-300FP's economical price with complete network security management features make it an inevitable choice for the next-generation office network load balancer.



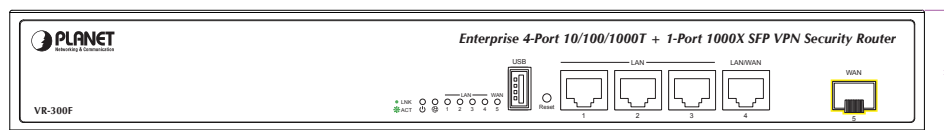
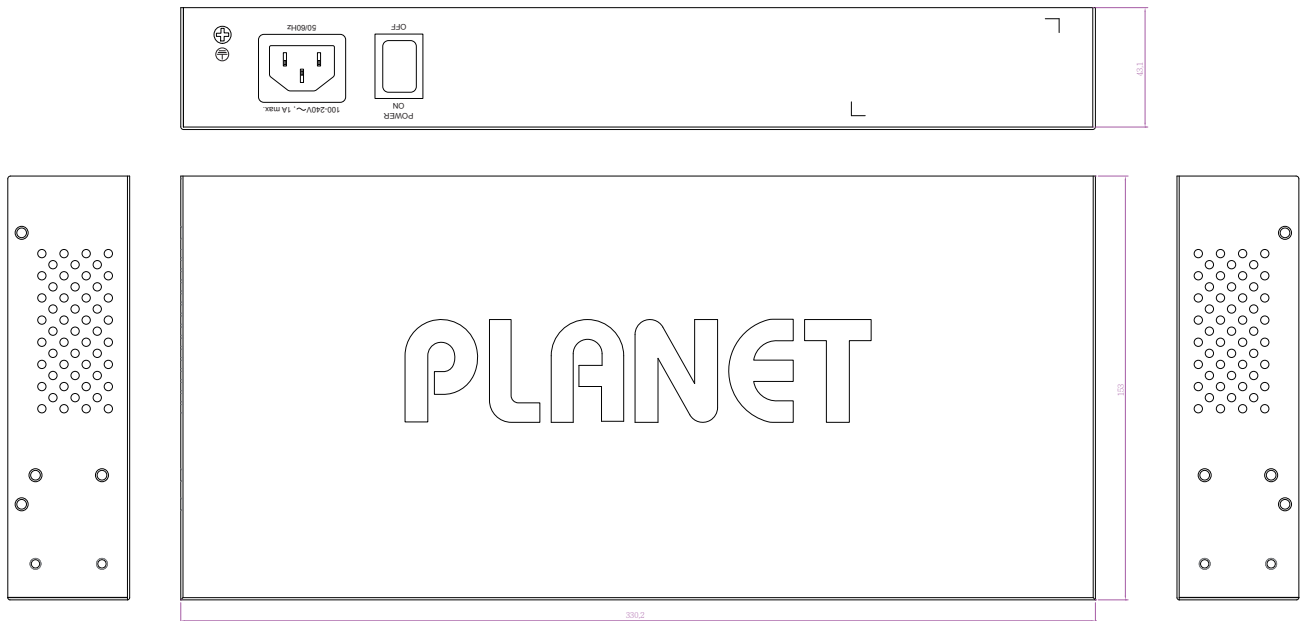
Specifications

Model	VR-300F	VR-300FP
Hardware Specifications		
Ethernet	4 10/100/1000BASE-T RJ45 Ethernet ports 1 1000BASE-X SFP slot 3 LAN ports (Ports 1 to 3) 1 LAN/WAN port (Port 4) 1 WAN port (Port 5)	
USB Port	1 USB 3.0 port for system configuration backup and restore	
Reset Button	Reset to factory default	
Thermal Fan	1	
LED Indicators	-	PWR (Green) Internet (Green) LAN/WAN (Green) PoE-in-Use LED (Amber)
Installation	Desktop installation or rack mounting	
Power Requirements	100~240V AC, 50/60Hz, auto-sensing	
Power Consumption / Dissipation	Max.3.7 watts/ BTU	Max.132 watts/ BTU
Weight	1.3kg	1.5kg
Dimensions (W x D x H)	330 x 155 x 43.5 mm, 1U height	
Enclosure	Metal	
Power over Ethernet (VR-300FP only)		
PoE Standard	-	IEEE 802.3af / 802.3at PoE+ PSE
PoE Power Supply Type	-	End-span
PoE Power Output	-	Per port 52V DC, 36 watts (max.)
Power Pin Assignment	-	1/2 (+), 3/6 (-)
PoE Power Budget	-	120 watts (max.) @ 25 degrees C 100 watts (max.) @ 50 degrees C
Max. Number of Class 4 PDs	-	4
PoE Management	-	PD Alive Check Scheduled Power Recycling PoE Schedule PoE Usage Monitoring
Security Service		
Firewall Security	Cybersecurity Stateful Packet Inspection (SPI) Blocks DoS/DDoS attack	
ALG (Application Layer Gateway)	SIP, RTSP, FTP, H.323, TFTP	
NAT	Port forwarding DMZ Host UPnP	
Content Filtering	MAC filtering IP filtering Web filtering	
Bandwidth Management	Outbound load balancing Failover for dual-WAN QoS (Quality of Service)	
Networking		
Operation Mode	Routing mode	
Routing Protocol	Static Route, Dynamic Route (RIP), OSPF	
VLAN	802.1q Tag-based, Port-based, Multi-VLAN	
Multicast	IGMP Proxy	
NAT Throughput	Max. 900Mbps	
Outbound Load Balancing	Supported algorithms: Weight	
Protocol	IPv4, IPv6, TCP/IP, UDP, ARP, HTTP, HTTPS, NTP, DNS, PLANET DDNS, PLANET Easy DDNS, DHCP, PPPoE, SNMPv1/v2c/v3.	

Key Features	HA (High Availability) Captive Portal RADIUS Server/Client AP Control
VPN	
VPN Function	IPSec/Remote Server (Net-to-Net, Host-to-Net) GRE PPTP Server L2TP Server SSL Server/Client (Open VPN)
VPN Tunnels	Max. 60
VPN Throughput	Max. 60Mbps
Encryption Methods	DES, 3DES, AES or AES-128/192/256 encrypting
Authentication Methods	MD5/SHA-1/SHA-256/SHA-384/SHA-512 authentication algorithm
Management	
Basic Management Interfaces	Web browser SNMP v1, v2c PLANET Smart Discovery utility/UNI-NMS supported
Secure Management Interfaces	SSHv2, TLSv1.2, SNMP v3
System Log	System Event Log
Others	Setup wizard Dashboard System status/service Statistics Connection status Auto reboot Diagnostics
Standards Conformance	
Regulatory Compliance	CE, FCC
Environment Specifications	
Operating	Temperature: 0 ~ 50 degrees C Relative Humidity: 5 ~ 95% (non-condensing)
Storage	Temperature: -10 ~ 60 degrees C Relative Humidity: 5 ~ 95% (non-condensing)

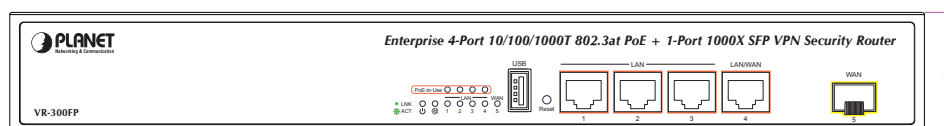
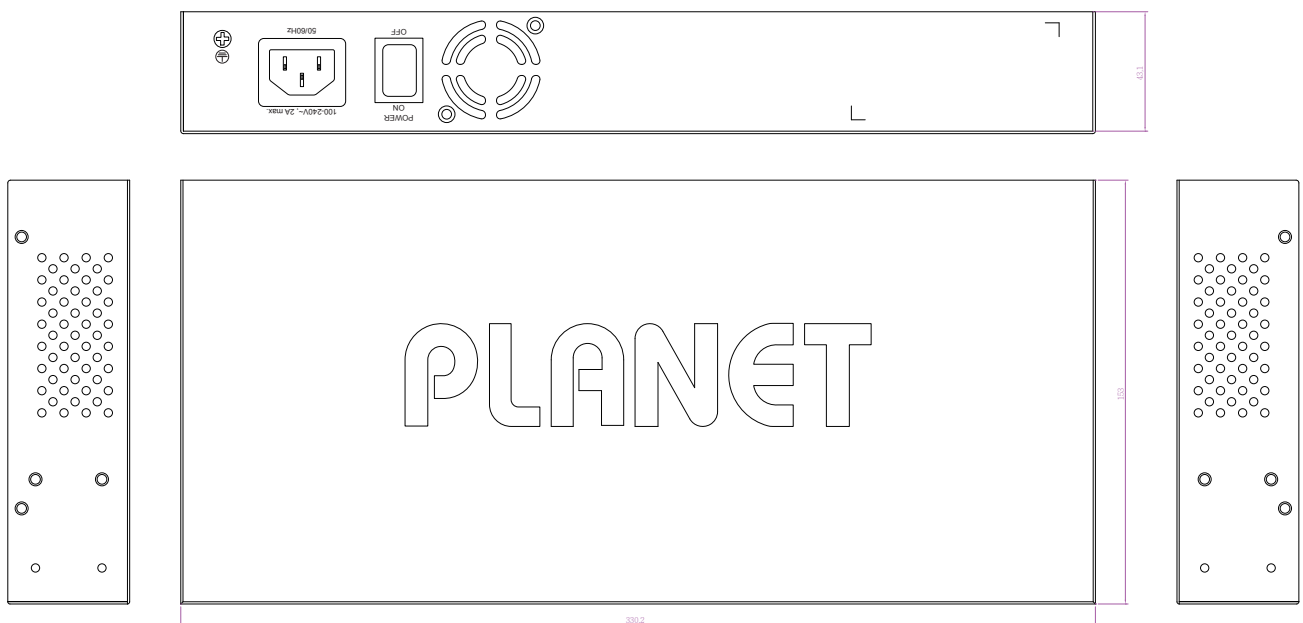
Dimensions

VR-300F



Unit: mm

VR-300FP



Unit: mm

Ordering Information

VR-300F	Enterprise 4-Port 10/100/1000T + 1-Port 1000X SFP VPN Security Router
VR-300FP	Enterprise 4-Port 10/100/1000T 802.3at PoE + 1-Port 1000X SFP VPN Security Router

Related Products

VR-300	Enterprise 5-Port 10/100/1000T VPN Security Router
VR-300P	Enterprise 4-Port 10/100/1000T 802.3at PoE + 1-Port 10/100/1000T VPN Security Router
VR-300W5	Wi-Fi 5 AC1200 Dual Band VPN Security Router
VR-300PW5	Wi-Fi 5 AC1200 Dual Band VPN Security Router with 4-Port 802.3at PoE+
VR-300W6	Wi-Fi 6 AC1800 Dual Band VPN Security Router
VR-300PW6	Wi-Fi 6 AX1800 Dual Band VPN Security Router with 4-Port 802.3at PoE+
VR-300W6A	Wi-Fi 6 AX2400 2.4GHz/5GHz VPN Security Router
VR-300PW6A	Wi-Fi 6 AX2400 2.4GHz/5GHz VPN Security Router with 4-Port 802.3at PoE+
VR-100	5-Port 10/100/1000T VPN Security Router
IVR-100	Industrial 5-Port 10/100/1000T VPN Security Gateway
ICG-2515-NR	Industrial 5G NR Cellular Gateway with 5-Port 10/100/1000T
ICG-2515W-NR	Industrial 5G NR Cellular Wireless Gateway with 5-Port 10/100/1000T
ICG-2510W-LTE	Industrial 4G LTE Cellular Wireless Gateway with 5-Port 10/100/1000T
ICG-2510WG-LTE	Industrial 4G LTE Cellular Wireless Gateway with 5-Port 10/100/1000T
VCG-1500WG-LTE	Vehicle 4G LTE Cellular Wireless Gateway with 5-Port 10/100TX
WGR-500-4PV	Industrial Wall-mount Gigabit Router with 4-Port 802.3at PoE+ and LCD Touch Screen
WGR-500-4P	Industrial Wall-mount Gigabit Router with 4-Port 802.3at PoE+
WGR-500	Industrial 5-Port 10/100/1000T Wall-mount Gigabit Router

PLANET Technology Corporation

11F., No.96, Minquan Rd., Xindian Dist., New Taipei City 231,
Taiwan (R.O.C.)

Tel: 886-2-2219-9518

Email: sales@planet.com.tw

Fax: 886-2-2219-9528

www.planet.com.tw



PLANET reserves the right to change specifications without prior notice. All brand names and trademarks are property of their respective owners. Copyright © 2021 PLANET Technology Corp. All rights reserved.

VR-300F/VR-300FP