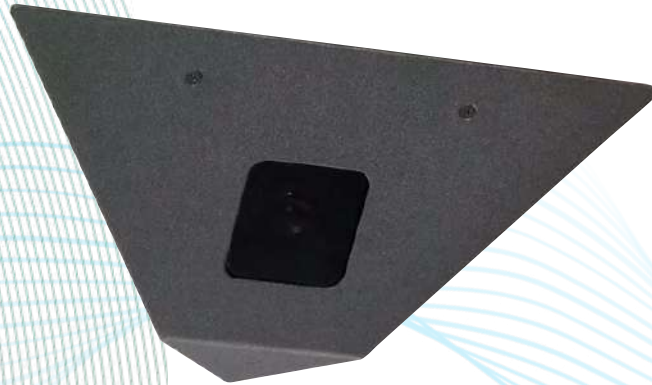




CMC-25-HD



FEATURES

- 1080p AHD resolution
- Tamper-resistant design
- Mounts flush to 90-degree corner
- Conduit knockouts provided (4)
- 2-Axis camera adjustment
- Super-wide 2.5mm lens
- 3D-DNR, Sens-up, D-WDR
- Black faceplate with tinted window
- 12VDC power input



Corner Mount Camera



1080p Resolution

2.5mm wide angle lens



Super Wide Angle Coverage

Wide angle lens with 2-axis adjustment



Tamper-resistant

Mounts flush to 90° corner



Ideal for Retail

Discreet corner mounting

SPECIFICATIONS

Model	CMC-25-HD
Image Sensor	1/3" CMOS
Effective Pixels	1944 (H) x 1092 (V) (2.1 MP)
Scanning System	Progressive Scan
Resolution	1080p @ 30 FPS, 720P @ 30FPS
Min. Illumination	0.1 lux @ F2.5, 30 IRE
Lens	2.5mm, F2.5
HFOV	88°
DSP Features	3D-DNR, Sens-up, D-WDR
Frame Rate	30fps
Power Supply	12VDC
Power Consumption	100mA max
Operating Temperature	14° ~ 122° F (-10° ~ 50° C)
Installation	Indoor (<80% RH)
Dimensions	3.3" H x 9.4" W x 4.7" D
Construction	Aluminum, black powder coat

Specifications are subject to change without notice.