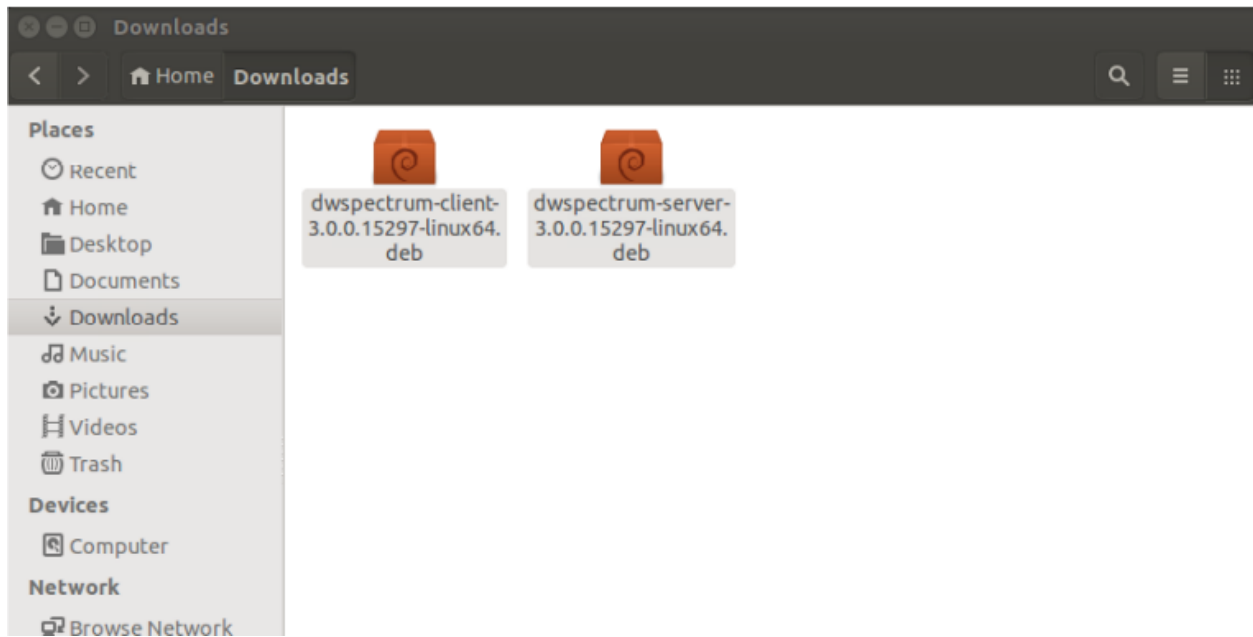


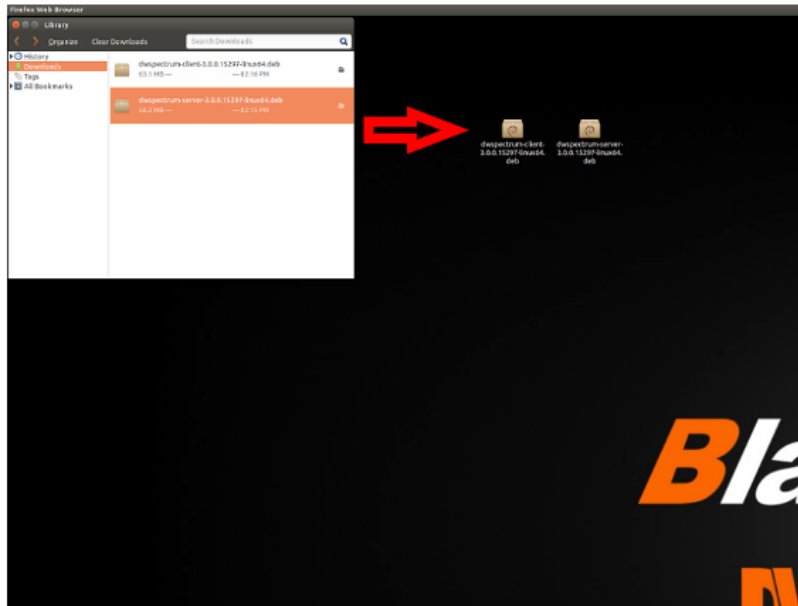
# How To Install Spectrum 3.0 On Ubuntu Linux

Step 1: Download Spectrum 3.0 from our website. You can find the latest version under the *Software* tab on the Spectrum Product Page. Be sure to download the Client and Media Server Install. From there, you can find the files you downloaded under the *Downloads* folder on your machine.



## DW Spectrum 3.0 Ubuntu Installation Steps

Step 2: Click and drag the files from the *Downloads* tab to the Desktop. This will make installing easier in a few steps.



Step 3: Press **CTRL + ALT + T** to bring up the terminal. Type in *sudo su* and press **ENTER**. Type in *admin* and press **ENTER**. This will be invisible, so don't worry if you don't see it.

```
bjbolt@BJBOLT: ~  
bjbolt@BJBOLT:~$ sudo su  
[sudo] password for bjbolt: admin
```

## DW Spectrum 3.0 Ubuntu Installation Steps

Step 4: Type in `cd Desktop` and press **ENTER**. Type in `ls` to list the files that are on the Desktop. **\*\*NOTE\*\*** It is important to capitalize, space and punctuate properly.

```
root@BJBOLT: /home/bjbolt/Desktop
bjbolt@BJBOLT:~$ sudo su
[sudo] password for bjbolt:
root@BJBOLT:/home/bjbolt# cd Desktop
root@BJBOLT:/home/bjbolt/Desktop# ls
dwspectrum-client-3.0.0.15297-linux64.deb  firefox.desktop
dwspectrum.desktop                        teamviewer-teamviewer10.desktop
dwspectrum-server-3.0.0.15297-linux64.deb  unity-network-panel.desktop
\root@BJBOLT:/home/bjbolt/Desktop#
```

Step 5: Type `dpkg -i dwspectrum-server-3.0.0.15297-linux64.deb` and press **ENTER**. (For faster way, type `dpkg -i dwspectrum-server` then press **TAB** for it to auto complete the rest!) The system will ask you to accept the EULA. Select Yes if you agree.

```
root@BJBOLT: /home/bjbolt/Desktop
bjbolt@BJBOLT:~$ sudo su
[sudo] password for bjbolt:
root@BJBOLT:/home/bjbolt# cd Desktop
root@BJBOLT:/home/bjbolt/Desktop# ls
dwspectrum-client-3.0.0.15297-linux64.deb  firefox.desktop
dwspectrum.desktop                        teamviewer-teamviewer10.desktop
dwspectrum-server-3.0.0.15297-linux64.deb  unity-network-panel.desktop
root@BJBOLT:/home/bjbolt/Desktop# dpkg -i dwspectrum-server-3.0.0.15297-linux64.deb
(Reading database ... 167999 files and directories currently installed.)
Preparing to unpack dwspectrum-server-3.0.0.15297-linux64.deb ...
digitalwatchdog-mediaserver stop/waiting
mediaserver-eula license has already been accepted
Unpacking digitalwatchdog-mediaserver (3.0.0) over (2.6.0) ...
Setting up digitalwatchdog-mediaserver (3.0.0) ...
stop: Unknown instance:
digitalwatchdog-mediaserver start/running, process 2779
Processing triggers for ureadahead (0.100.0-16) ...
ureadahead will be reprofiled on next reboot
root@BJBOLT:/home/bjbolt/Desktop#
```

## DW Spectrum 3.0 Ubuntu Installation Steps

Step 6: The System will now overwrite the old Spectrum with the new 3.0. Once it is done, you can then type `dpkg -i dwspectrum-client-3.0.0.15297-linux64.deb` and press **ENTER**. (You can use the same trick from last time here as well, just type `dpkg -i dwspectrum-client` and press **TAB** to auto complete the rest!)

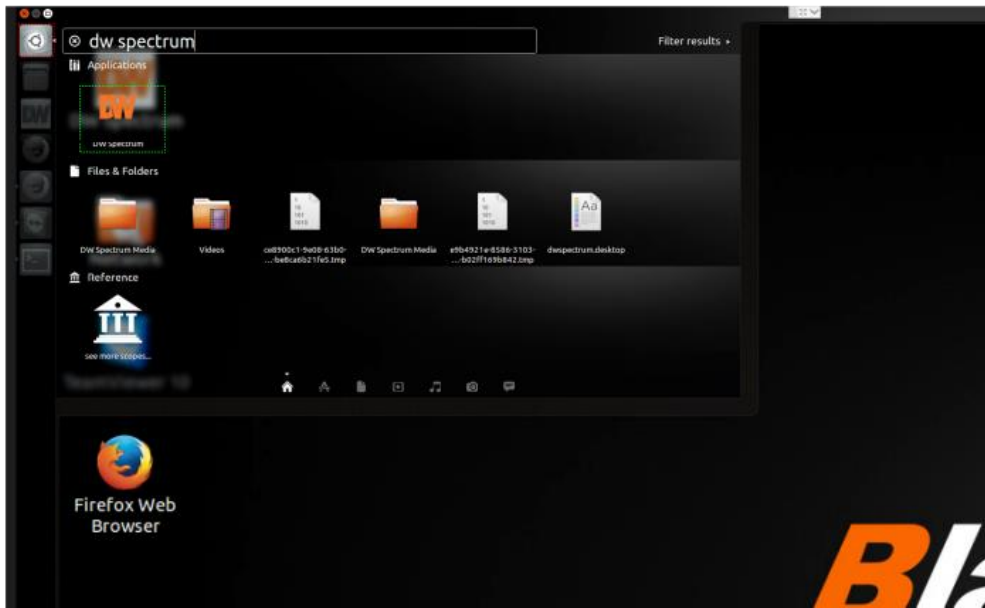
```
bjbolt@BJBOLT:~$ sudo su
[sudo] password for bjbolt:
root@BJBOLT:/home/bjbolt# cd Desktop
root@BJBOLT:/home/bjbolt/Desktop# ls
dwspectrum-client-3.0.0.15297-linux64.deb  firefox.desktop
dwspectrum.desktop                       teamviewer-teamviewer10.desktop
dwspectrum-server-3.0.0.15297-linux64.deb  unity-network-panel.desktop
root@BJBOLT:/home/bjbolt/Desktop# dpkg -i dwspectrum-server-3.0.0.15297-linux64.
deb
(Reading database ... 167999 files and directories currently installed.)
Preparing to unpack dwspectrum-server-3.0.0.15297-linux64.deb ...
digitalwatchdog-mediaserver stop/waiting
mediaserver-eula license has already been accepted
Unpacking digitalwatchdog-mediaserver (3.0.0) over (2.6.0) ...
Setting up digitalwatchdog-mediaserver (3.0.0) ...
stop: Unknown instance:
digitalwatchdog-mediaserver start/running, process 2779
Processing triggers for ureadahead (0.100.0-16) ...
ureadahead will be reprofiled on next reboot
root@BJBOLT:/home/bjbolt/Desktop# dpkg -i dwspectrum-client-3.0.0.15297-linux64.
deb
```

Step 7: Once the install is done, you will have the option to type again. Simply close the terminal. It will warn that you are running processes but this can be ignored.

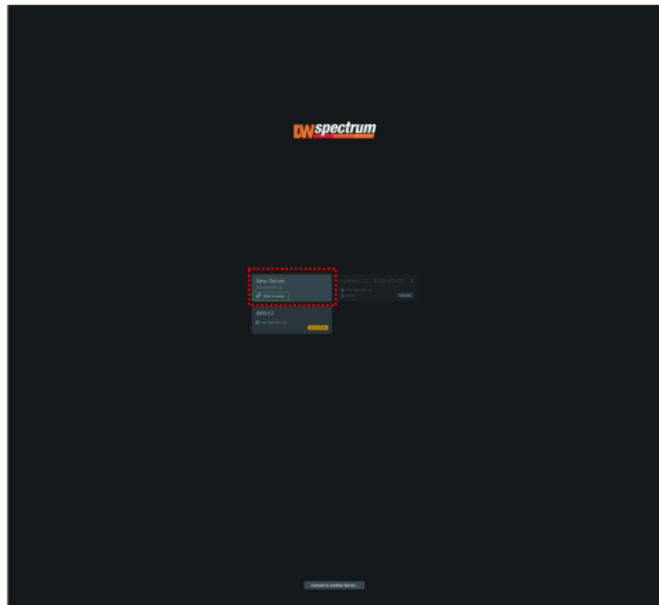
```
root@BJBOLT: /home/bjbolt/Desktop
(Reading database ... 167999 files and directories currently installed.)
Preparing to unpack dwspectrum-server-3.0.0.15297-linux64.deb ...
digitalwatchdog-mediaserver stop/waiting
mediaserver-eula license has already been accepted
Unpacking digitalwatchdog-mediaserver (3.0.0) over (2.6.0) ...
Setting up digitalwatchdog-mediaserver (3.0.0) ...
stop: Unknown instance:
digitalwatchdog-mediaserver start/running, process 2779
Processing triggers for ureadahead (0.100.0-16) ...
ureadahead will be reprofiled on next reboot
root@BJBOLT:/home/bjbolt/Desktop# dpkg -i dwspectrum-client-3.0.0.15297-linux64.
deb
(Reading database ... 167955 files and directories currently installed.)
Preparing to unpack dwspectrum-client-3.0.0.15297-linux64.deb ...
client-eula license has already been accepted
Unpacking digitalwatchdog-client (3.0.0) over (2.6.0) ...
Setting up digitalwatchdog-client (3.0.0) ...
Processing triggers for gnome-menus (3.10.1-0ubuntu2) ...
Processing triggers for desktop-file-utils (0.22-1ubuntu1) ...
Processing triggers for bamfdaemon (0.5.1+14.04.20140409-0ubuntu1) ...
Rebuilding /usr/share/applications/bamf-2.index...
Processing triggers for mime-support (3.54ubuntu1.1) ...
Processing triggers for hicolor-icon-theme (0.13-1) ...
root@BJBOLT:/home/bjbolt/Desktop#
```

## DW Spectrum 3.0 Ubuntu Installation Steps

Step 8: Search for Spectrum using the Ubuntu Icon and run the software from there. You can click and drag the software to the desktop if the shortcut wasn't automatically created.

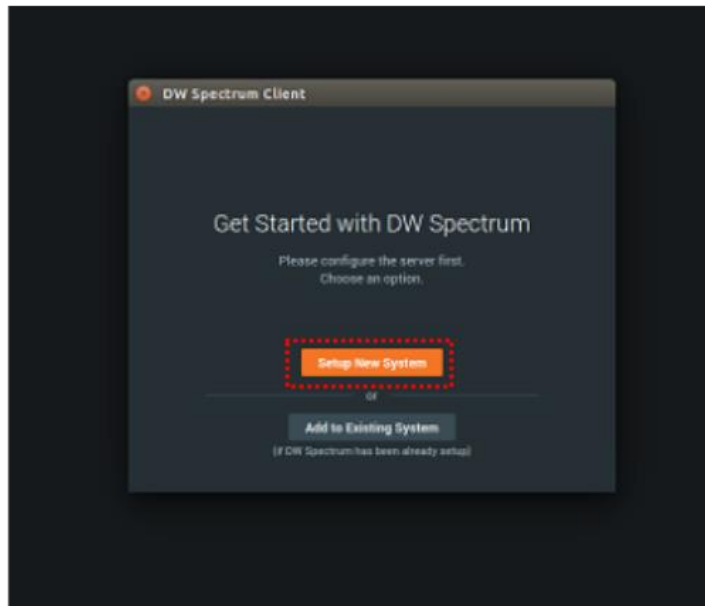


Step 9: Running Spectrum will provide you with the server being automatically detected. Selecting the server will bring up the first time setup.

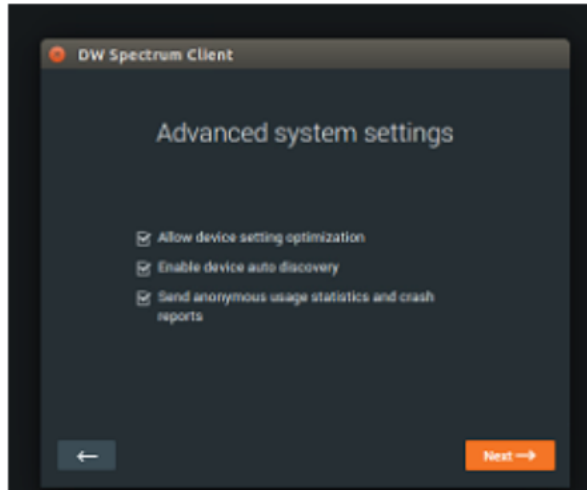
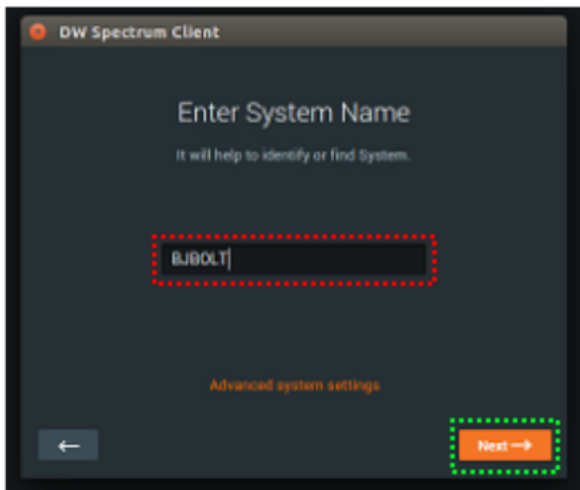


# DW Spectrum 3.0 Ubuntu Installation Steps

Step 10: Select **SETUP NEW SYSTEM** to create the new server.

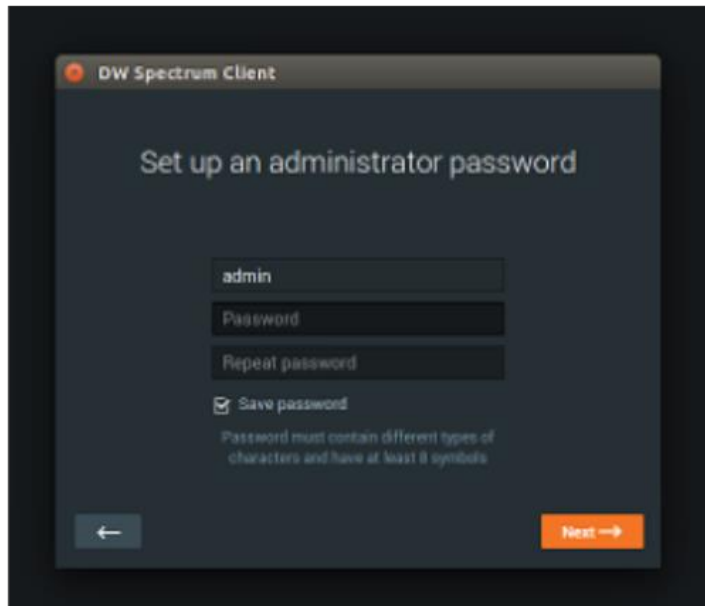


Step 11: You have the option to create your system name. It is advised to stick to alphanumeric characters. You can select **ADVANCED SYSTEM SETTINGS** for additional configurations.



## DW Spectrum 3.0 Ubuntu Installation Steps

Step 12: Create your password. The default is *admin1234* but you can create your own. It must be a minimum of 8 characters. The password *is* case-sensitive and can contain some special characters.



Step 13: Your server is ready to be used!

