

VMAX ip PLUS
Complete IP Video Solutions

9ch w/4 PoE	12ch w/8 PoE	16ch w/16 PoE
DW-VP9P	DW-VP12P	DW-VP16P
DW-VP92T4P	DW-VP123T8P	DW-VP163T16P
DW-VP94T4P	DW-VP124T8P	DW-VP164T16P
DW-VP96T4P	DW-VP126T8P	DW-VP166T16P
	DW-VP128T8P	DW-VP168T16P
	DW-VP1212T8P	DW-VP1612T16P
		DW-VP1618T16P
		DW-VP1624T16P



Default Login Information	
Username: admin	Password: no password

WHAT'S IN THE BOX

Item	Quantity	Description	Image	Quantity
QSG Manual	1 Set	48V D/C & Power Cable (*DW-VP16xT16P models come with Power cable only)		1 Set
IR Remote Control (Optional)	1 Set	Rubber Mounts – 4pcs		1 Set
USB Mouse	1 Set			

NOTE: Download All Your Support Materials and Tools in One Place

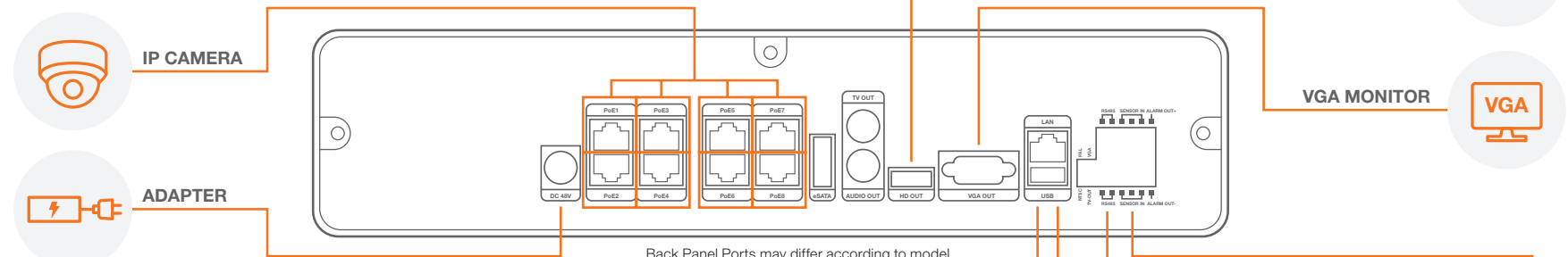
- Go to: <http://www.digital-watchdog.com/support-download/>
- Search your product by entering the part number in the 'Search by Product' search bar. Results for applicable part numbers will populate automatically based on the part number you enter.
- Click 'Search'. All supported materials, including manuals, Quick Start Guides (QSG), software and firmware will appear in the results.

Attention: This document is intended to serve as a quick reference for initial set-up. It is recommended that the user read the entire instruction manual for complete and proper installation and usage.

STEP 1 – CONNECTING THE NVR

- Mount and install all necessary IP cameras and external devices. Refer to their individual manuals for additional information.
- Place the NVR in its final position. See installation tips below.
- Connect all necessary cables to the NVR.
- Once all additional devices have been properly connected to the NVR, connect the NVR to an appropriate power supply. The NVR will boot up automatically.

Model	Total PoE Power Budget	Max Power per Port
DW-VP9-4P	90.24Watt	15.4Watt
DW-VP12-8P	158.4Watt	15.4Watt
DW-VP16-16P	200Watt	15.4Watt



SAFETY TIPS

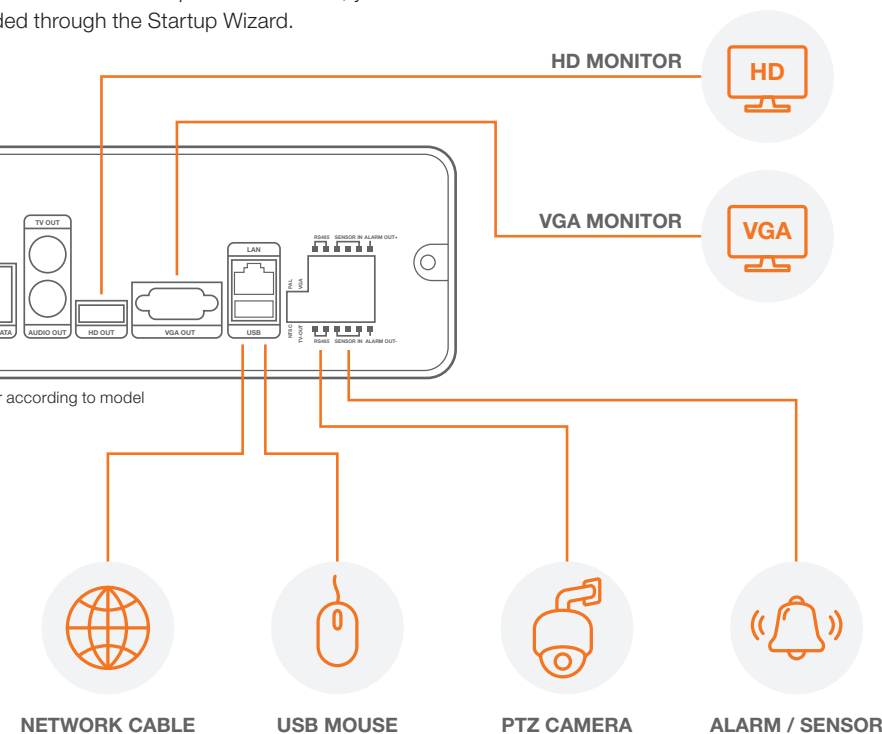
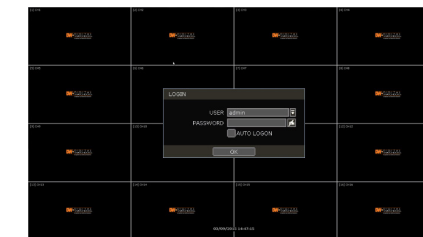
- Make sure the cameras and the monitors are properly connected to the NVR.
- The NVR should be placed in a dust and moisture free environment. It must never be directly exposed to sunlight. Server room temperature is highly recommended to reduce the chance of overheating, which may cause the NVR to become unstable.
- During the boot up process, the NVR should not be interrupted by pressing any buttons on the mouse. Do not unplug the power adapter or turn the NVR off during the boot up process.
- A UPS (Uninterrupted Power Supply) is highly recommended to prevent damage to the NVR during a power outage.

NOTE:

- HD Monitor output and VGA output cannot be used at the same time for dual monitoring.
- When using the TV output, the NVR's menu will not be accessible.
- To connect additional IP cameras to the NVR, connect a PoE switch to the NVR's network port.

STEP 2 – POWERING UP THE NVR

- When the NVR boots up, it will be in protective mode. This means you will not be able to access the NVR's setup menu until you login using the proper username and password.
- To unlock the NVR, right-click anywhere on the screen. The login screen will appear. (Default Username / Password: admin / no password)
- When the NVR boots up for the first time, you will be guided through the Startup Wizard.



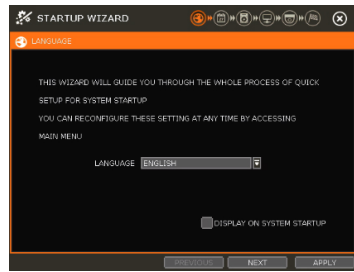
To prevent the NVR from overheating, do not operate it in an area that exceeds the maximum recommended ambient temperature of 104°F (40°C). To prevent airflow restriction, allow at least 3 inches (7.6 cm) of clearance around the ventilation openings.



STEP 3 – STARTUP WIZARD



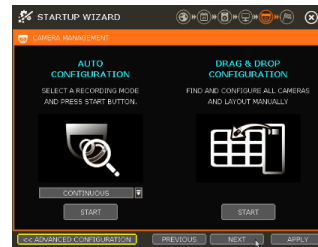
- Follow the startup wizard's instructions to setup the NVR's basic settings, including language, date/time, network and configure your cameras. At any time you can skip steps, go back, or exit the wizard and setup the NVR manually.
- Language – Select the appropriate language from the drop-down menu options. Press Apply to Save and Next to move to the next step.
- Set the NVR's date and time, including time zone, Daylight Savings and NTP Time Sync. If needed, set the NVR to sync its time automatically with an external NTP server. Select the server from the TIME SYNC MODE/CYCLE drop-down options and the sync interval. Press Apply to Save and Next to move to the next step.



- Set the NVR's network settings to match your network's requirements. It is recommended to set the network type to DHCP and let the NVR auto-detect the network's settings by selecting the IP detect button. Then, change the type to Static. Please contact your Network Administrator for additional information. Press Apply to Save and Next to move to the next step.

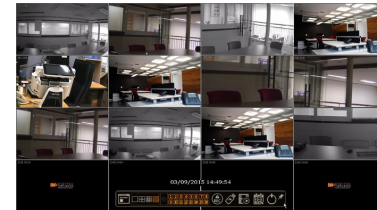


- The VMAX IP Plus' Camera Configuration screen allows you to detect all the cameras in your network and automatically add them to the NVR. Select one of the following options:
 - AUTO MANAGEMENT** – The system will automatically scan the network and add the first cameras it detects to the NVR. Cameras connected directly to the NVR's PoE Switch will be assigned to channels automatically.
 - DRAG & DROP CONFIGURATION** – The NVR will scan the network for all supported cameras and display them in a table. Select which cameras to add by click and hold the camera's name, and dragging it to the display area to its corresponding channel.



STEP 4 – MONITOR YOUR SYSTEM

- NAVIGATION** – use the included USB mouse to navigate around the NVR's monitoring and Setup pages.
 - To access the MENU BAR – move the mouse's cursor to the bottom of the display area to show the menu bar. You can also display it constantly by pressing the pin icon on the right side.
 - To access the QUICK MENU OPTIONS – Right-click anywhere on the screen. This will take you to the quick menu options, which include:
 - Display Mode Options
 - Camera Control features such as Digital Zoom, Virtual PTZ and Camera Image Adjustment and Setup
 - Bookmark video
 - Instant Playback and Search
 - Recording and PoE status and analysis such as network and system monitoring
 - Access to the Main Menu
- HELP** – For your convenience, the HELP button located at the bottom right of setup screens includes basic information and explanation of the features and settings in that page, for on-the-go information.



STEP 5 – REMOTE MONITORING

DDNS Setup

The DDNS address provides your NVR a URL address, easier to remember than an IP address. This is a free feature supported by Digital Watchdog for its customers.

- Go to the Network setup menu, and select the 'DDNS' tab.
- Check USE DDNS to enable. (Make sure both the NVR's web port and TCP/IP port are properly setup in your router. If you need assistance, please contact your internet service provider).
- Select DYNLINK.NET (default).
- Enter a name for your NVR and click the CHECK button. If the name is available, the system will display the following message: "THIS NVR NAME CAN BE USED". Click SAVE to save all changes.
- To use your DDNS, open an Internet Explorer page and enter the DDNS in the address bar: NVRname.dynlink.net:port-number. (Example: http://vmaxipplus.dynlink.net:80)

