

D-TECT IP alarm integration with Milestone Xprotect



Introduction

Network based surveillance systems with IP cameras steadily increases in popularity as it allows for better image quality, remote setup and easy integration in existing networks. Moreover, it allows remote monitoring centres to take care of the surveillance.

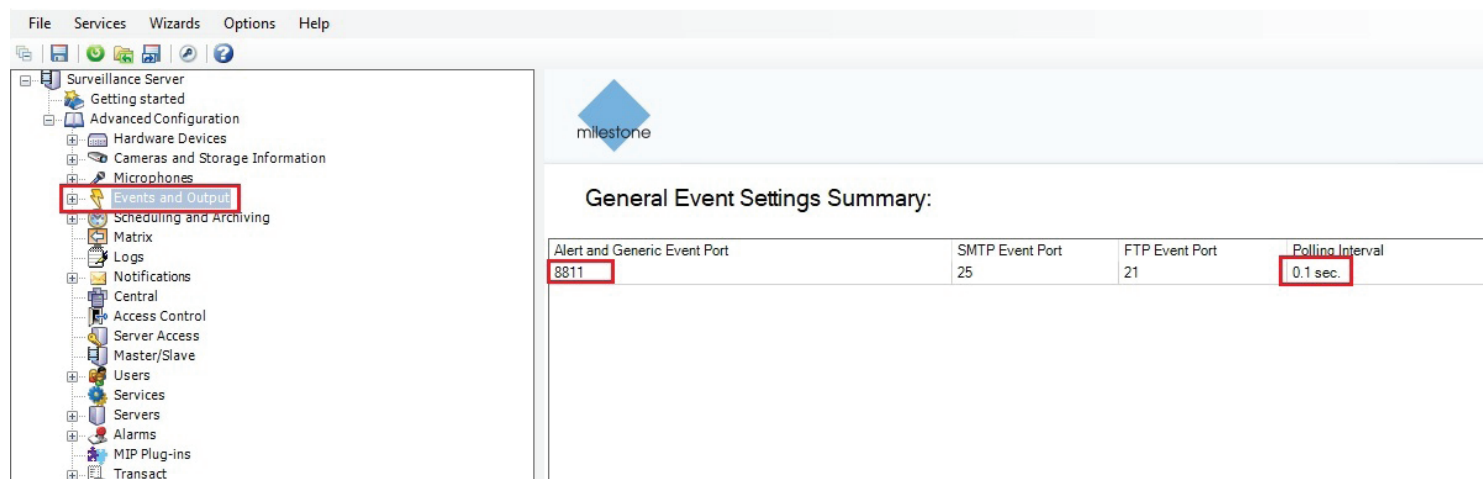
Modern surveillance systems also require modern sensors. GJD produces unique IP enabled outdoor detectors with network connection for direct integration with video management software (VMS) and other equipment. In case of alarm the sensor sends a network call to the VMS server for instant recording of the nearest camera or to automatically notify security personnel. Unlike relay based sensors GJD's IP sensors are able to send many different alarm messages depending on event, without need for extra cable installation.

This paper describes how to integrate GJD's D-TECT IP products with the Milestone XProtect VMS software.

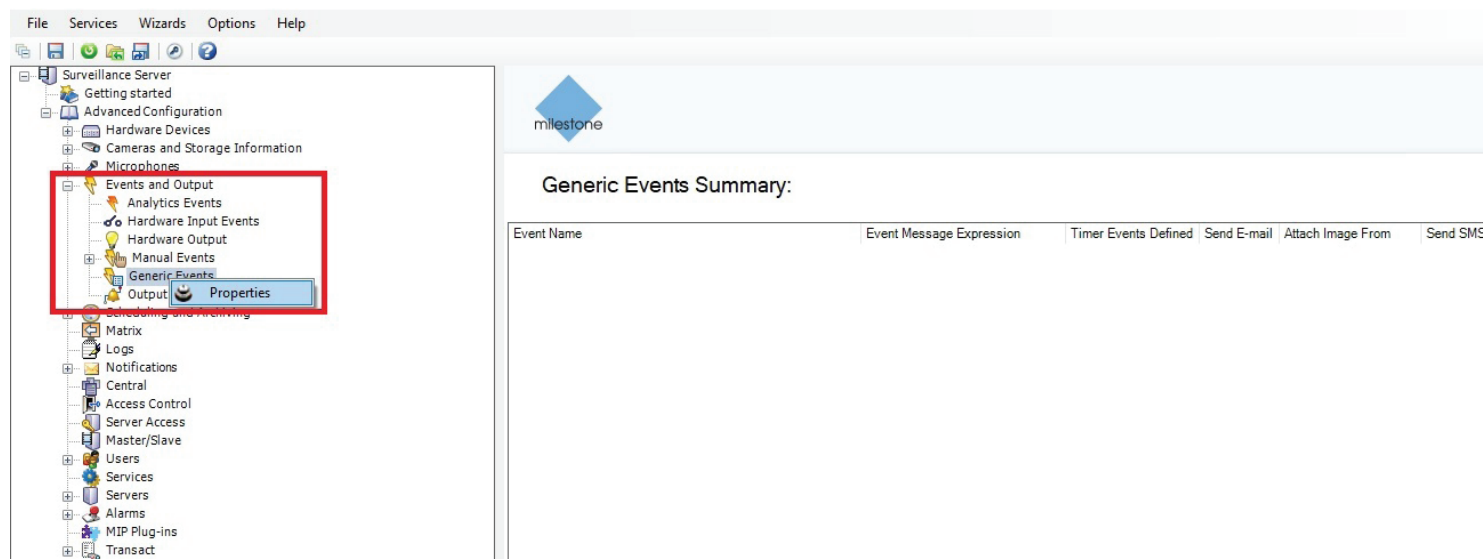
Configure Events

This section describes how to set up Milestone Xprotect in order to receive network alarms for connected D-TECT IP units.

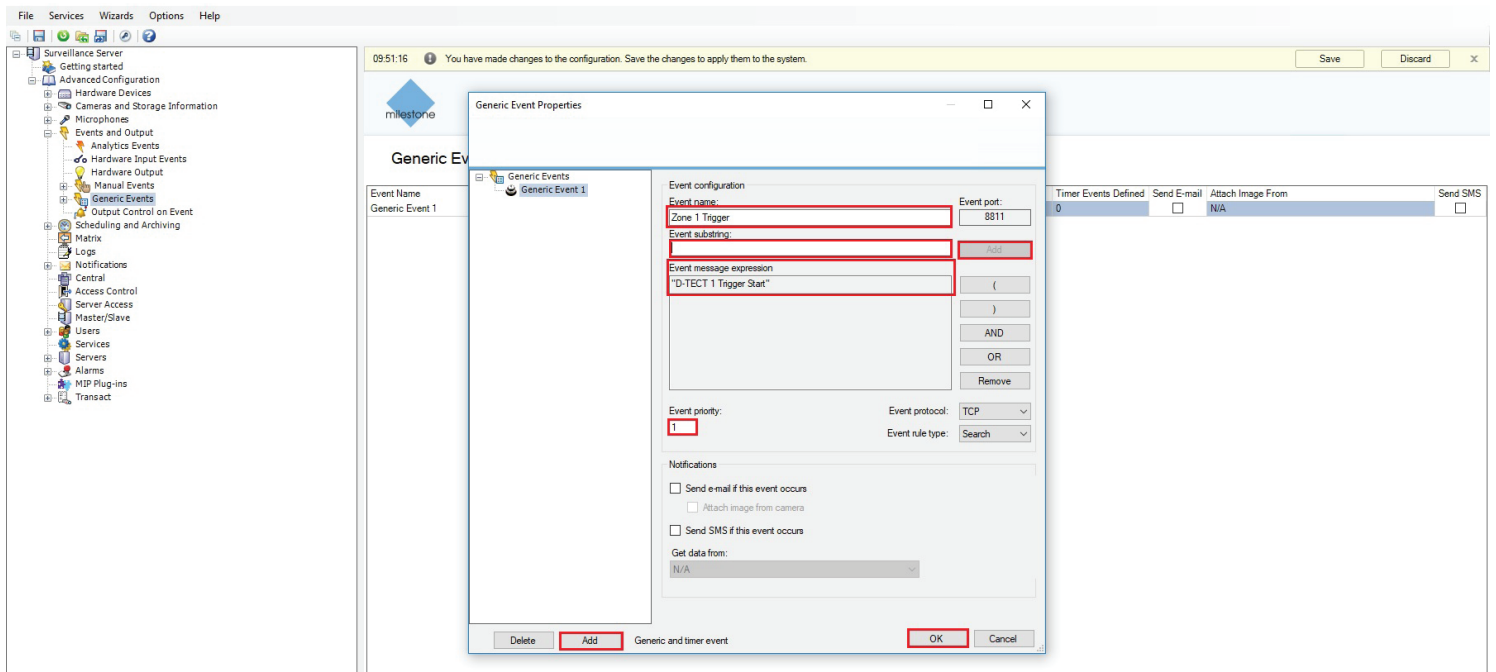
1. Start Xprotect Management Application
2. Open the Events and Output section to show general event settings
3. Click on Alerts and Generic Event Port and set desired port number. In this example port 8811 is used
4. Click on Polling Interval and set to 1/10s to get the quickest reaction time



5. In the left menu, right click on Generic Events and click on Properties. A popup window appears.



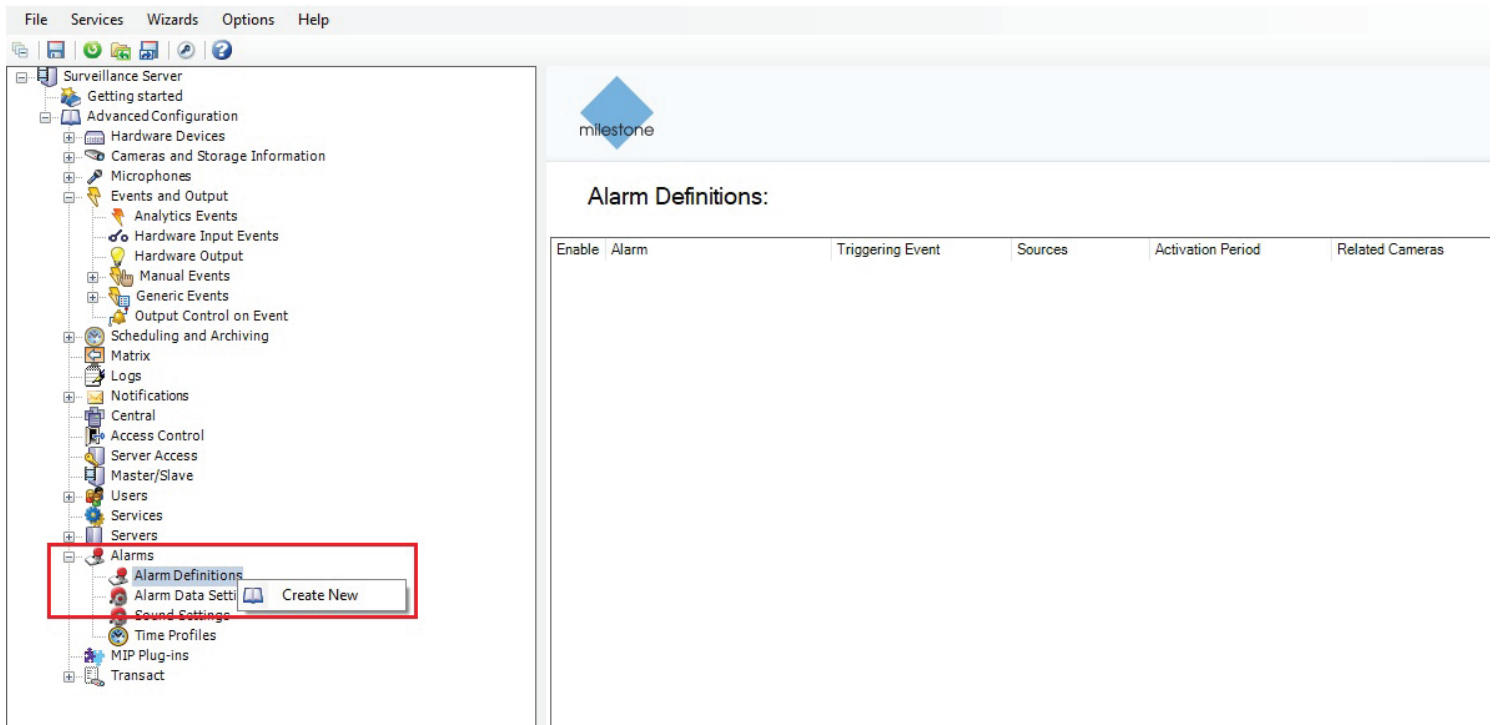
6. Click the add button on the popup box
7. Enter a descriptive name in the Event Name field, for example, "Zone 1 Event"
8. Enter a unique sub-string in the Event sub-string field and press the Add button. The sub-string must be unique for each event and should also describe the function, for example "Zone 1 Start"
9. Set event priority (1-3) in the Event Priority field
10. Finish by pressing the OK button



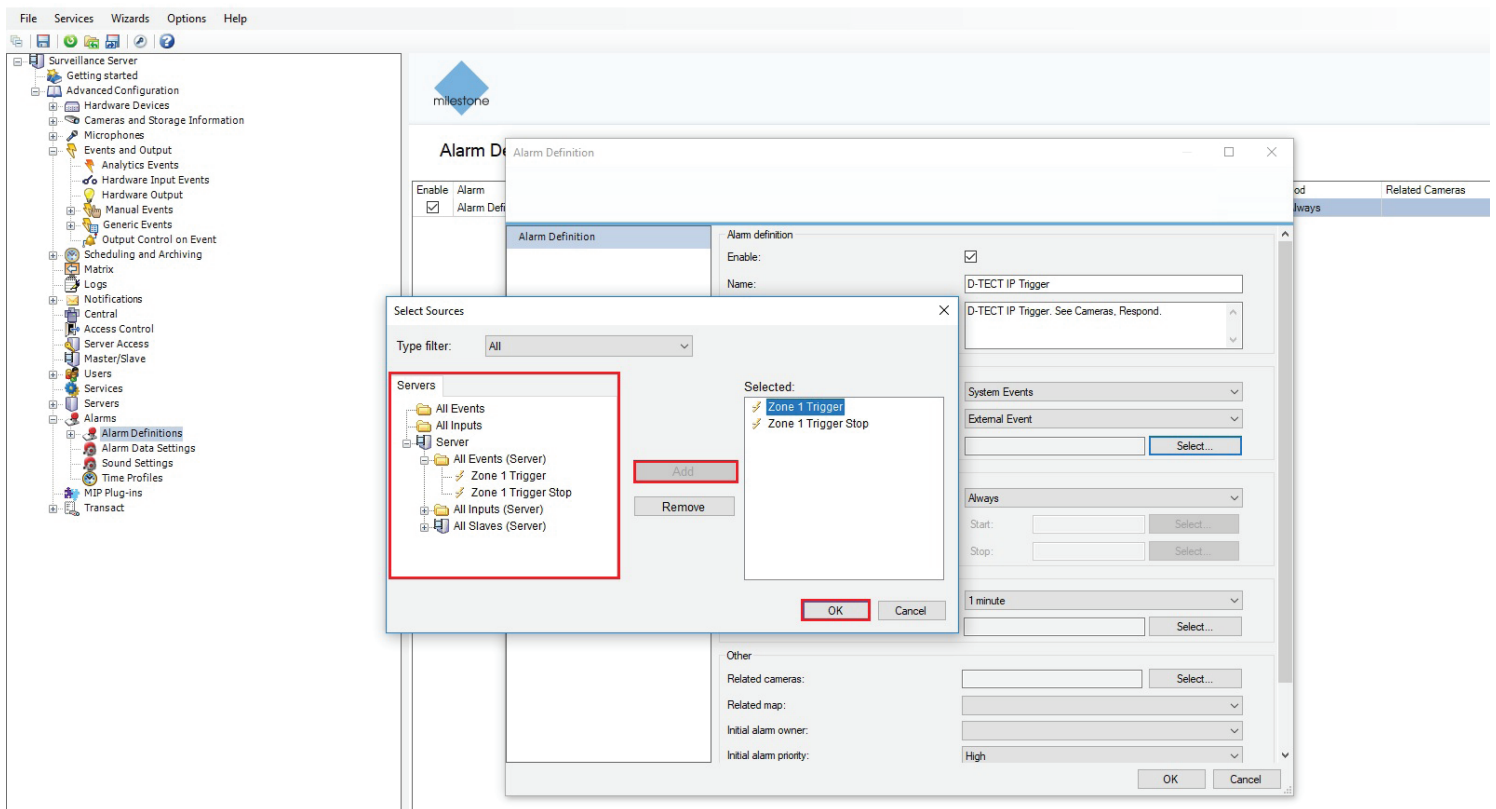
11. Repeat above to create a stop event for the zone
12. Create start and stop events for each zone in the area

Create Alarms

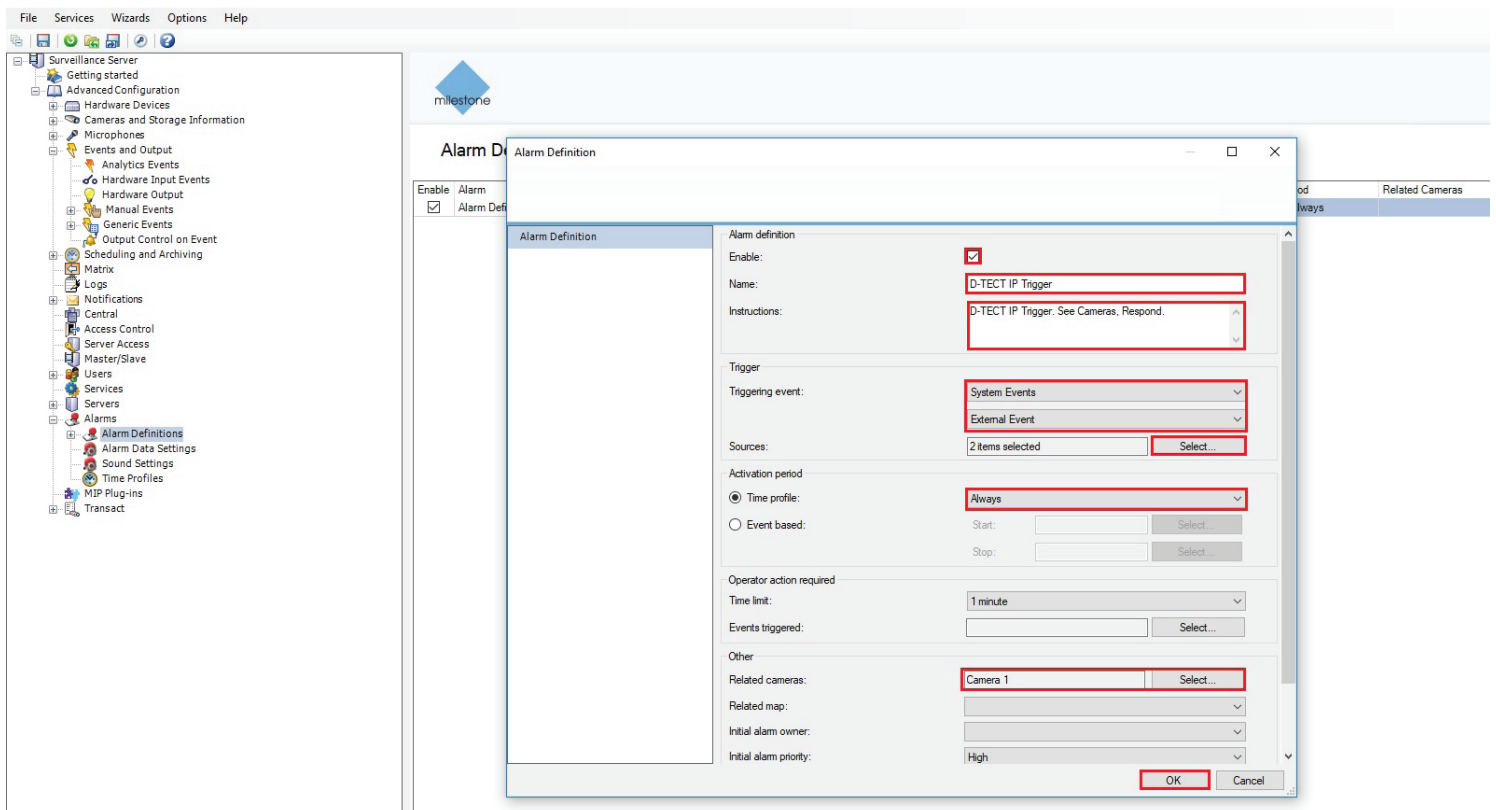
1. In the left menu, right click Alarm Definitions and choose Create New.
A popup window appears



2. In the Alarm Definition field, enter an alarm name and description and make sure the alarm is enabled
3. Set Triggering event to "System Event" in the drop-down menu and then choose "External Event" below that.
4. Choose trigger source(s) for the alarm by pressing the select button. A new popup appears
5. Find the zone start events created earlier and add one or more to the alarm. Finish by pressing OK button



6. Set desired activation period
7. Related cameras can be set for notifications in the client window
8. Save the alarm by pressing OK button



D-TECT IP Action Setup

1. Add and event with the desired settings and limitations
2. Press Add action
3. Choose Milestone VMS in the drop-down menu. A pop-up is shown
4. Enter the Milestone server IP, Generic event port, start event sub-string and stop sub-string

The screenshot shows the D-TECT IP web interface. At the top, there's a navigation bar with tabs: Events, Sensor settings, Unit configuration, Import and export settings, Firmware update, and Logout. Below this, there's a section for 'Events enabled' and 'Events disabled' with radio buttons. A button 'Add event' is visible. The main content area is titled 'Milestone (PIR detection)' and has buttons for 'Test', 'Remove', 'Edit', and 'Add action'. A modal dialog box titled 'Edit action' is open in the center. It contains the following fields:

- Action type: Milestone VMS (selected in a dropdown)
- Milestone server IP: 192.168.0.44
- Generic event port: 8811
- Start event substring: D-TECT 1 Trigger Start
- Stop event substring: D-TECT 1 Trigger Stop

At the bottom of the dialog are 'Cancel' and 'Save action' buttons.

5. Press Save action

The screenshot shows the Milestone XProtect Smart Client 2016 R2 interface. The top bar indicates the date and time: 21/02/2018 10:50:04. The main window is divided into several sections:

- Top Bar:** Live, Playback, Sequence Explorer, Alarm Manager (active), and Setup.
- Left Panel:** A sidebar with 'Alarms' and 'Servers' sections. Under 'Alarms', there are filters for 'New (9)', 'In progress (1)', 'On hold (0)', and 'Closed (0)'. Under 'Servers', there is a 'Server' section.
- Main View:** A large area displaying a list of alarms. The list has columns for Time, Priority Level, State Level, State Name, Message, Source, Owner, and ID. The current view shows a list of alarms, with the most recent one being 'New' at 10:47:31 on 21/02/2018, with a priority level of 1, state level of 1, state name of 'New', message of 'External Ever', source of 'Zone 1 Trigger', owner of 'LAPTOP-', and ID of 13.
- Right Panel:** A video feed window showing a camera view of a room with a desk and a person. The video feed is labeled 'Camera 1 - 21/02/2018 10:50:00.576'.