



## MB800-ID

### Multi-biometric Access Control

Modern, accurate and affordable fingerprint, facial and RFID reader



#### Multi-biometric technology:

Identify or verify users by their face, fingerprint, proximity card or PIN/password... or any combination, all conveniently from a single device. Built-in infrared light source enables operation in dimly lit rooms.



#### Communication:

MB800-ID installs easily on your network having both TCP/IP and RS232/485 serial ports. Its USB port allows for offline data backup and management when the network is unavailable.



#### Capacity:

Supports one to many (1: N) matching for up to 1,500 faces and 4,000 fingerprint templates and 10,000 cards/badges. Stores up to 100,000 transactions.



#### Options:

MB800-ID can be configured with optional internal modules which read HID Prox, HID iclass or 13.56 MHz Mifare cards.



#### Display/Audio:

Stunning 2.8" color TFT touch screen provides ease of use and rich user experience with intuitive and user friendly GUI. Includes both voice and visual prompts which indicate the acceptance or rejection of fingerprint, face, prox card or PIN/Password.



#### Access control:

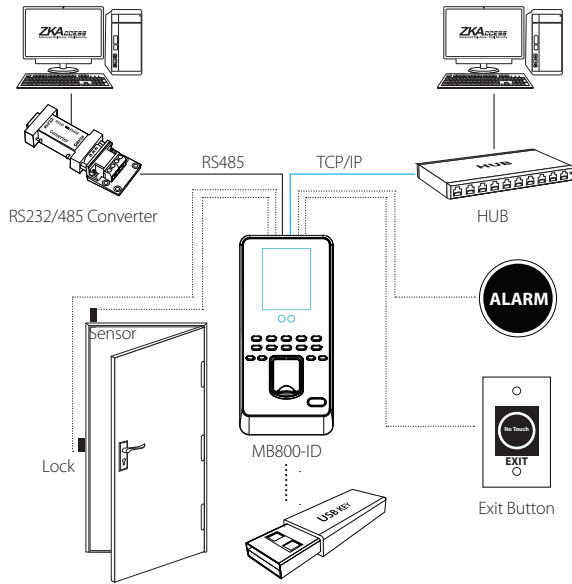
Contact Relays for door locks, exit button, alarms & bell. Supports 50 time zones, 99 groups and 10 unlock combinations. Wiegand IN and OUT ports can be used to connect MB800-ID to any ZK or 3rd party access control panels and peripherals.



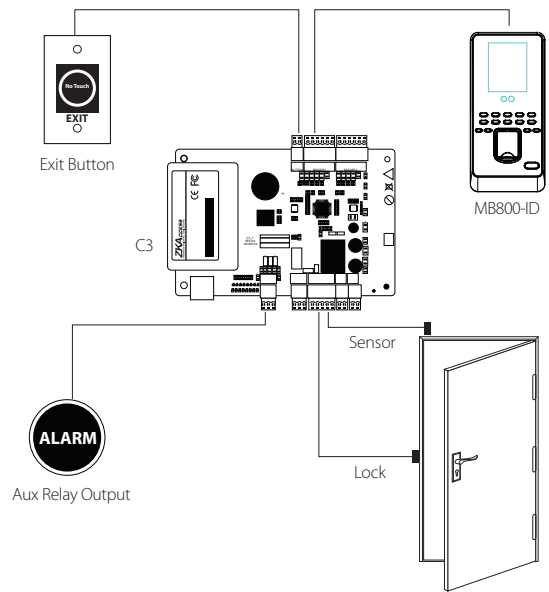
#### For Software Developers:

Free SDK and development tools are available for developers/partners who wish to integrate MB800-ID with any application which requires verifying people. Custom development is also available for OEM partners upon request.

## Standalone Installation



## Installation with Access Control Panel



## Specifications

### Capacity

Face: 1,500  
Fingerprint: 4,000  
Cards: 10,000

### Display

2.8 inch TFT Touch Screen Display

### Camera and Light Source

640 x 480 pixel camera  
Highly efficient infrared light source

### Power

12V DC, 3A

### Communication

Ethernet, RS232, RS485,  
Weigand Input and Output, USB Host

### Environment

Operating Temperature:  
32° to 113° F ( 0° to 45° C)  
Operating Humidity: 20% to 80%

### Dimensions

Height: 7.4 in (18.8 cm)  
Width: 3.5 in (8.8 cm)  
Thickness: 2.5 in (6.5 cm)  
Weight: 3lbs (1.36 kg)

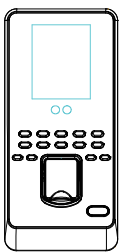
### Supported Card Formats

ZKAccess 125 kHz prox  
HID 125 kHz prox  
HID iClass  
Mifare

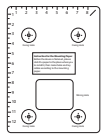
### Part Numbers

MB800-ID: with ZKAccess prox card reader  
MB800-HID: with HID 125 kHz prox card reader  
MB800-Mifare: with Mifare card reader  
MB800-iClass: with HID iClass prox card reader

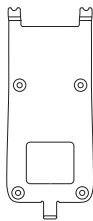
## What's in the Box



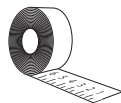
MB800-ID



Installation  
Template



Back Plate



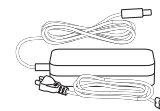
Measuring Tape



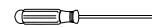
Network Cable



Screws



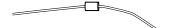
AC Power Adapter



Screwdriver



Cables



Diode

## ZKTeco USA

6 Kingsbridge Road, Unit 8, Fairfield, NJ 07004  
Phone: (862) 505-2101 • Fax: (862) 204-5906 • sales@zkaccess.com • www.zkaccess.com

© Copyright 2016. ZKTeco Inc. ZKTeco Logo and ZKAccess Logo are registered trademarks of ZKTeco or a related company.  
All other product and company names mentioned are used for identification purposes only and may be the trademarks of their respective owners.  
All specifications are subject to change without notice. All rights reserved.

