



DSS Professional V8.3

Release Notes



Legal Information

Copyright

© 2023 ZHEJIANG DAHUA VISION TECHNOLOGY CO., LTD. All rights reserved.

This document cannot be copied, transferred, distributed, or saved in any form without the prior written permission of Zhejiang Dahua Vision Technology Co., LTD (hereinafter referred to as "Dahua").

The products described in this document may contain the software that belongs to Dahua or the third party. Without the prior written approval of the corresponding party, any person cannot (including but not limited to) copy, distribute, amend, abstract, reverse compile, decode, reverse engineer, rent, transfer, sublicense the software.

Trademarks

The image shows four variations of the Dahua logo (with "TECHNOLOGY" in smaller text below) and the HDCVI logo. The logos are arranged horizontally and separated by commas. The text "and" is placed between the fourth Dahua logo and the HDCVI logo. The text "are the trademarks or registered trademarks of Dahua." follows the logos.

All other company names and trademarks mentioned herein are the properties of their respective owners.

Disclaimer

- These release notes are for reference only. Slight differences might be found between the release notes and the product.
- Succeeding products and release notes are subject to change without notice.
- If there is any uncertainty or controversy, we reserve the right of final explanation.

Table of Contents

Legal Information	I
Release Notes	1
1.1 Basic Version Information.....	1
1.2 New and Optimized Functions	1
1.2.1 New Functions.....	1
1.2.2 Optimized Functions.....	3
1.2.3 Fixed Bugs.....	5
1.3 Description of New and Optimized Functions.....	6
1.3.1 Deployment	6
1.3.2 Device Management	7
1.3.3 User Management.....	7
1.3.4 Storage Management.....	8
1.3.5 Event.....	9
1.3.6 Person and Vehicle Management.....	13
1.3.7 Monitoring Center.....	16
1.3.8 DeepXplore	23
1.3.9 Access Control.....	23
1.3.10 Visitor	27
1.3.11 Attendance	28
1.3.12 Video Intercom.....	29
1.3.13 Parking Lot.....	29
1.3.14 Intelligent Inspection.....	29
1.3.15 Maintenance Center.....	33
1.3.16 System Parameter.....	35
1.3.17 Platform Management Tool.....	36
1.3.18 Local Configuration.....	36
1.4 Operating System Compatibility Description.....	37

Release Notes

1.1 Basic Version Information

Product name	DSS Professional
Version	V8.003.0000000.0.R
Software package information	General_DSS-Professional_Server_Win64_IS_V8.003.0000000.0.R.20230701.exe
OS requirements	CPU: Intel Xeon Silver 4114@2.2 GHz 10-core Processor Memory: 16 GB Network adapter: 1000 Mbps Hard disk type: Enterprise-level HDD 1 TB Free space: No less than 500 GB
Release date	July 2023

1.2 New and Optimized Functions

1.2.1 New Functions

Module	Functions
Deployment	<ul style="list-style-type: none"> Users are prompted when a switchover occurs between the primary and backup servers in a hot standby. Supports deploying the AcuPick component so that you can use the function to automatically recognize targets.
IP Speaker	Supports IP speakers. <ul style="list-style-type: none"> IP speakers can be linked by events to play specified audio files. You can engage in audio talk through IP speakers.
Device management	<ul style="list-style-type: none"> Supports switches. Then, you can view the network topology and information of switches, and configuring their parameters in Maintenance Center. Supports accessing and controlling alarm output channels of access control devices.
Event	<ul style="list-style-type: none"> Supports processing alarms in batches. Supports mandatory remarks for processing events. When a user is processing an event, the user must enter remarks. Supports configuring preprocessing remarks for events. When users are processing an event, the defined remarks will be filled in by default.

Module	Functions
	<ul style="list-style-type: none"> Added the unlicensed vehicles event for video channel.
Person and vehicle management	<ul style="list-style-type: none"> Supports customizing more information for people. Supports importing domain users as persons by group and by user, and automatic synchronization of person information. For people that have been added to the platform, you can import images in batches to set their images at the same time. Supports granting people or person groups access to doors or lifts by access rules. If you grant access to a person group, the access will also be granted to all people in the group.
Monitoring center	<ul style="list-style-type: none"> Added public view and private view. The specified roles and their users can access the resources in the public view, while the private view is configured and owned by each user, and can be shared to other users. Added AcuPick that can automatically identify all kinds of targets in real-time or recorded videos, and you can select one and quickly go to DeepXplore to search for that target. Supports adjusting the volume of TiOC camera. Supports multi-level management of favorites and sharing to other users. The maximum level of favorites supports 10 levels. Supports one click to set all preview windows as alarm windows.
Map	<ul style="list-style-type: none"> Alarm sources imported by bridges can be marked and will flash when alarms are triggered. EAS devices can be marked and will flash when alarms are triggered.
DeepXplore	<ul style="list-style-type: none"> Supports adding faces in the search results to arming lists. Supports AcuPick that searches for targets recognized in videos or uploaded in images across various devices.
Access Control	<ul style="list-style-type: none"> Added global anti-passback that you can configure an anti-passback route based on the door channels in a zone. Supports checking the people on a device against those on the platform, and quickly address issues if any occurs. Added the Task Details page where you can view the progress of applying access rules to access points.
Parking lot	Supports allowing vehicles with no license plates to enter. When configuring the passing rule for a parking lot, if you select All Vehicles, you can choose whether to allow unlicensed vehicles to enter or exit. If this function is enabled, all vehicle without license plates will be able to enter or exit the parking lot.
Intelligent inspection	Added the intelligent inspection function. The platform can regularly use HD cameras and thermal imaging technology to inspect devices, such as power equipment, or an area, and collect images and temperatures during the process.
Maintenance center	<ul style="list-style-type: none"> Overview is changed to Workstation that displays the device running status, storage usage, server running status, and alerts. Supports switches, and you can view their network topology and information of switches, and configuring their parameters.

Module	Functions
	<ul style="list-style-type: none"> ● Add alerts. Configure alert rules to monitor the running status of devices and servers, such as services stop running or device disconnection. After alerts are triggered, you can process them and export relevant reports. ● Added analysis report that displays system information, device access status, and alert information. You can customize the report content to be sent to specified email addresses.
System parameter	<ul style="list-style-type: none"> ● Supports creating or importing a CA certificate. ● Supports configuring the AcuPick comparison method. <ul style="list-style-type: none"> ◇ Edge intelligence: You can compare images on only one device. ◇ Central intelligence: You can compare images on multiple devices.
Local configuration	<ul style="list-style-type: none"> ● Supports prioritizing videos stored on the platform or devices for video playback. ● Supports exporting configurations of the PC client for the current user, and importing them to another PC client. ● Supports configuring displaying whether to display the recording status of devices. ● Added frame extraction modes, which include do not extract, self-adaptive, and force.
Platform Management Tool	<ul style="list-style-type: none"> ● Supports all languages that are supported by the PC client. ● Supports displaying ports that needed to be mapped for different functions in LAN and WAN mapping.
Others	Supports installing the PC client with an MSI installation package.

1.2.2 Optimized Functions

Module	Function Description
Device management	<ul style="list-style-type: none"> ● For multi-channel IPCs added to the platform through NVR, the platform will display the video channel each alarm input channel belongs to. ● Removed the function where you can configure the parameters of IPCs. ● Device names and passwords support all characters. ● The reasons will be displayed for devices that go offline because SIP numbers are repeated.
User management	<ul style="list-style-type: none"> ● Administrators can view their own user information. ● Supports importing domain users by group and by user, and automatic synchronization of their information. ● Notifications will be displayed after roles or users are deleted.
Storage management	Supports configuring the retention period of central recording for multiple channels in batches. When you have configured the retention period for a video channel, you can apply the configuration to other channels.
Event	<ul style="list-style-type: none"> ● Supports up to 200 email templates. ● Supports up to 3,000 time templates. ● Supports double-click to zoom in on images and maps.

Module	Function Description
	<ul style="list-style-type: none"> ● Support subscribing to images of custom alarms. After subscribing, the platform can receive images from the alarms. ● Supports loop and override modes. When alarms are triggered, specified video channels will be opened on video walls. ● Support setting the alarm video pre-recording mode for devices in batches, including platform cache or on the device. ● When processing events, the processing methods include processed (confirm as alarm, false alarm) and forward. ● Supports playing back videos in full screen. ● The event statistics includes the number of false alarms. ● The names of the event types for access control channels are changed to alarm event, abnormal access, and normal access.
Person and vehicle management	<ul style="list-style-type: none"> ● Supports importing vehicle information when importing people in batches. ● Only administrators are allowed to delete people in batches. Login password verification and a second confirmation prompt are also added when deleting people in batches. ● Support granting people access rights through access rules. ● Supports creating App accounts for people in simple steps. ● The name of a person can be up to 127 characters.
Monitrong center	<ul style="list-style-type: none"> ● Supports voice intercom with NVR/XVR/IVSS/EVS. ● Supports synchronous playback of recordings from multiple channels. ● Supports playing back videos forward and backward frame by frame, and adjusting the play speed through the keyboard's arrow keys. Additionally, press and hold the left and right arrow keys to continuously play back frames forward or backward. ● When playing back a video or multiple videos synchronously, the current play speed will be kept after switching between forward and backward playback. ● Support searching for video tags. ● After selecting a fisheye view, it will be saved even if you close and reopen the channel or the PC client. ● When playing back videos stored on devices, you can filter videos by main stream and sub stream.
DeepXplore	Supports exporting results within up to 31 days.
Access control	<ul style="list-style-type: none"> ● Access control devices are categorized into access control recognition terminals and access controllers. ● Door and lift control is combined into access control based on zones and access points. <ul style="list-style-type: none"> ◇ Manage zones. ◇ Configure and maintain access rules. ◇ In the access control panel, door and lift channels in different zones can be viewed and controlled. ◇ For access records, you can view historical access events, analysis on people entering and exiting, and the movement path of people. ● Optimized the speed of applying access rules to devices.

Module	Function Description
Visitor	Upon visitor registration, the arrival time is automatically set to the current time and cannot be altered.
Attendance	Supports changing the time format for attendance reports, and the overtime and away records.
Video intercom	Reasons will be displayed when there is a failure in sending contacts and private passwords.
Intelligent analysis	Supports exporting a heat map that covers up to 1 month.
Maintenance center	Supports checking the recording duration and integrity of all storage devices, such as NVR and IVSS.
Notification center	A notification will be generated when a device reconnects to the platform.
System parameter	<ul style="list-style-type: none"> ● For message retention period, access control and lift control records are combined into access records. ● Login password authentication is applied to all video download operations. ● NTP time synchronization supports server domain names.
Local configuration	<ul style="list-style-type: none"> ● Support configuring the alarm pop-up window and client to be displayed on top when an alarm is triggered. ● Added shortcut keys for increasing/decreasing the playback speed and for playing back videos frame by frame forward or backward. ● Supports setting the maximum size of a recording file. When the limit is reached, the platform will automatically divide it into multiple files. 32-bit operating systems support up to 4 GB, while 64-bit operating systems support up to 1024 GB. ● Supports setting the input and display format of access cards, including decimal and hexadecimal modes.
Platform management tool	<ul style="list-style-type: none"> ● Optimized the process and pages during installation. ● Optimized certain services and ports.
Others	Updated security baseline to V3.0.

1.2.3 Fixed Bugs

- On a map, after using the rectangle function to select certain devices, and then chose to show certain types of devices, devices that were not selected were displayed in the list.
- When touring channels, the content in the right-click menu were not correctly after you right-click a window that was playing a video.
- Services would restart after a network disk added to the platform in normal mode was deleted.
- When playing videos in .dav format in the case bank, the timestamp was not displayed.
- After the people counting rule of an IPC connected to a storage device was edited, the platform must synchronize twice to successfully update its information.
- Only 14 characters of the RAID name of an IVSS were displayed even if it had 15 characters.
- The heat map of an IPC connected to an NVR that was searched for on the platform was inconsistent with the data on the IPC.
- When configuring combined rules, if abnormal characters were entered in the name, the platform would prompt that it could not be empty after clearing the name content.

1.3 Description of New and Optimized Functions

1.3.1 Deployment

Supports deploying the AcuPick component so that you can use the function to automatically recognize targets. You can deploy the component on the same server as the platform, or on another server.

Figure 1-1 On the same server as the platform

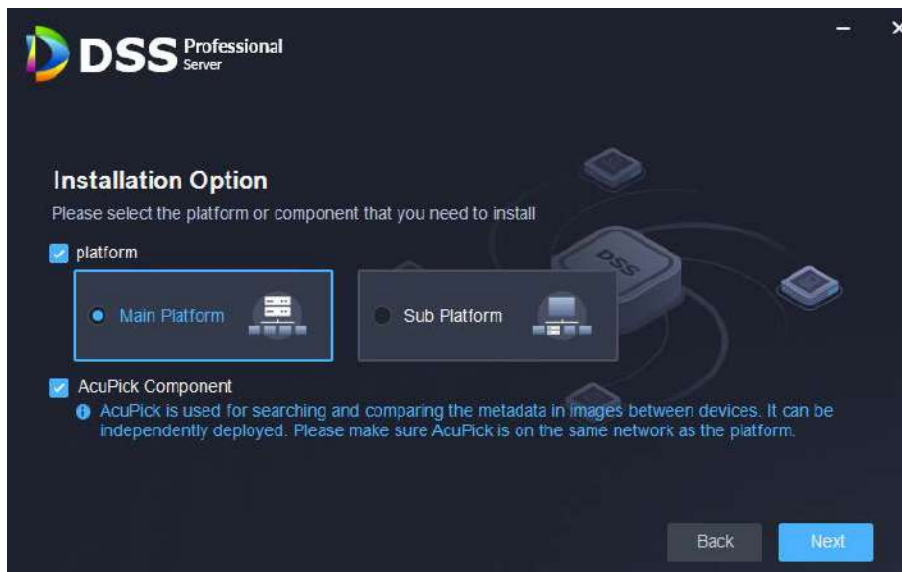
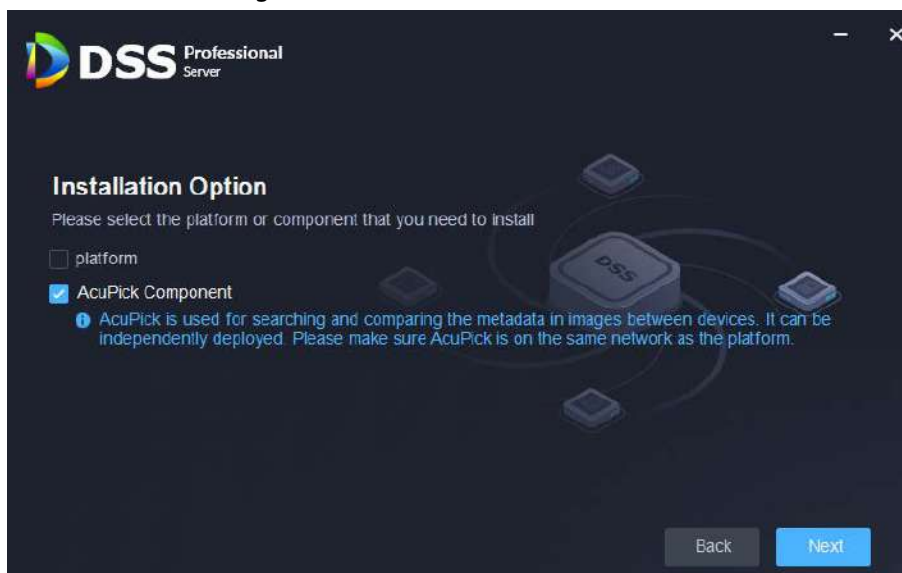







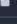

Figure 1-2 On another server



1.3.2 Device Management

- For multi-channel IPCs added to the platform through NVR, the platform will display the video channel each alarm input channel belongs to.

Figure 1-3 Associated channels

Channel No.	Channel Name	Channel Type	Associated Channel Name	Associated Channel No.	Alarm Type	Operation
1	К а н а л 29_1	Remote	К а н а л 29	1	Remote External Alarm	
2	К а н а л 29_2	Remote	К а н а л 29	1	Remote External Alarm	
3	К а н а л 29_3	Remote	К а н а л 29	1	Remote External Alarm	
1	13.63_1	Remote	13.63	2	Remote External Alarm	
2	13.63_2	Remote	13.63	2	Remote External Alarm	
1	13.62_1	Remote	13.62	3	Remote External Alarm	
2	13.62_2	Remote	13.62	3	Remote External Alarm	

1.3.3 User Management

- Supports importing domain users by group and by user, and automatic synchronization of their information.
 - You can import an entire group, or certain users in a group.
 - The automatic synchronization will import new users to the platform and update the information of existing users.

Figure 1-4 Import users from the domain

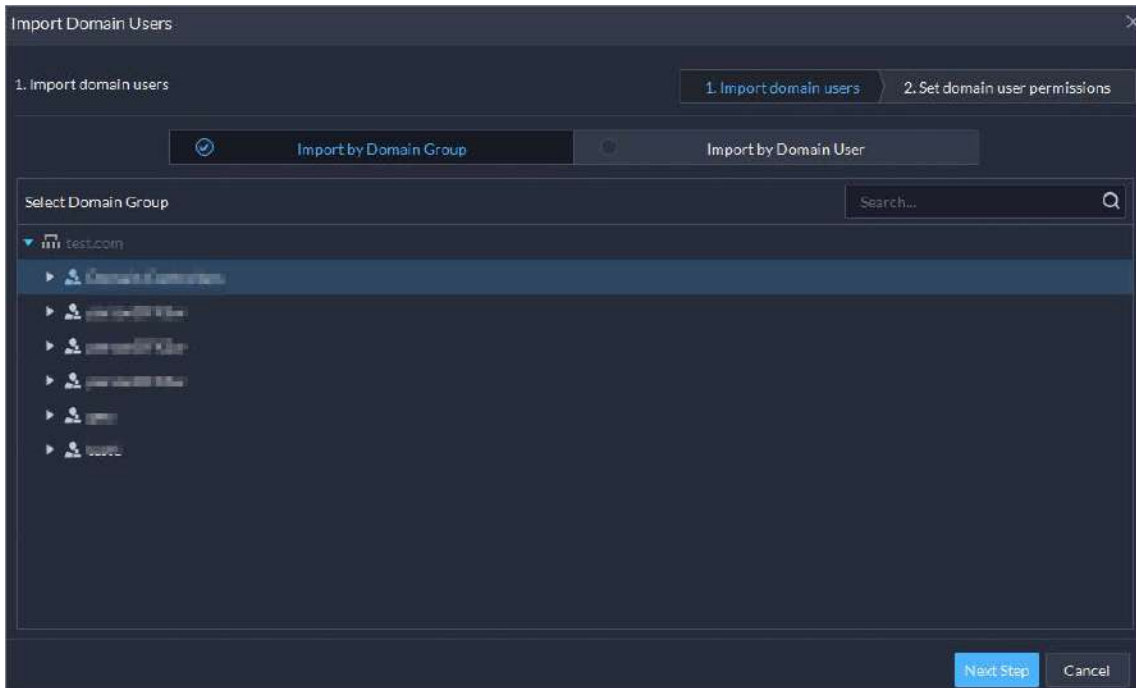
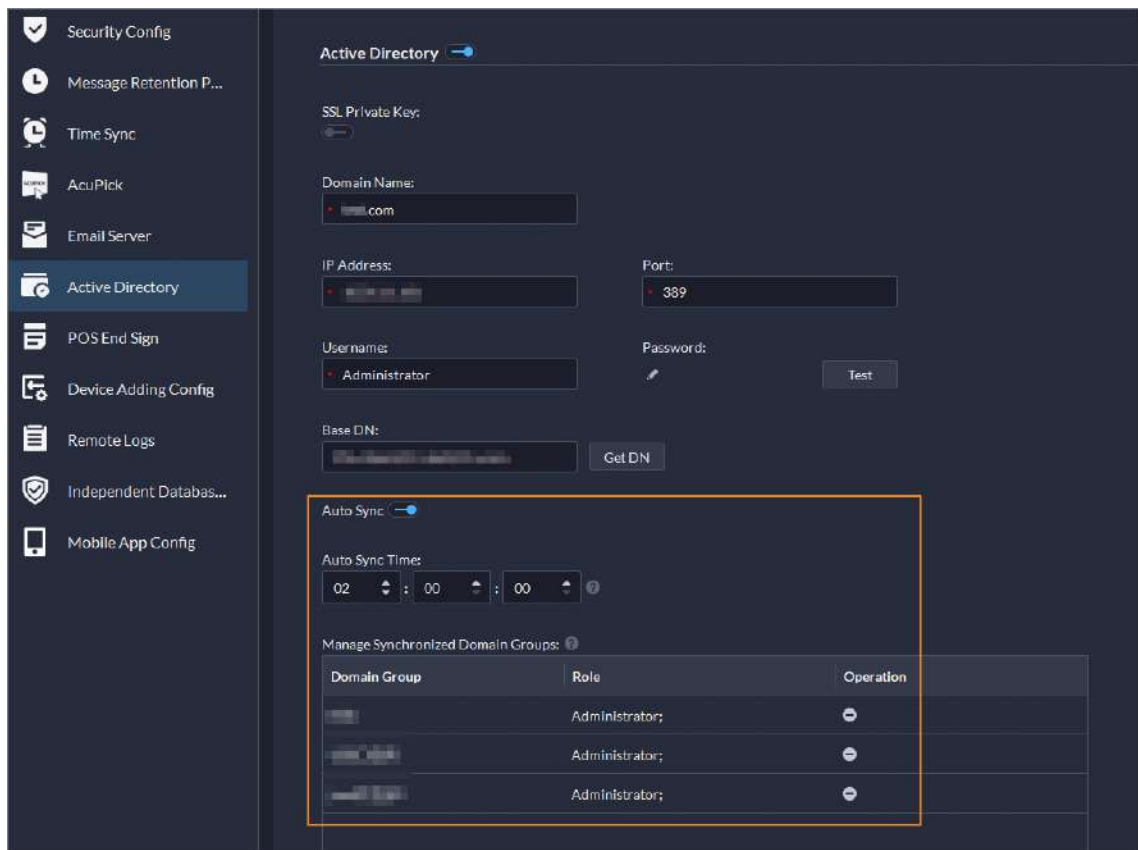


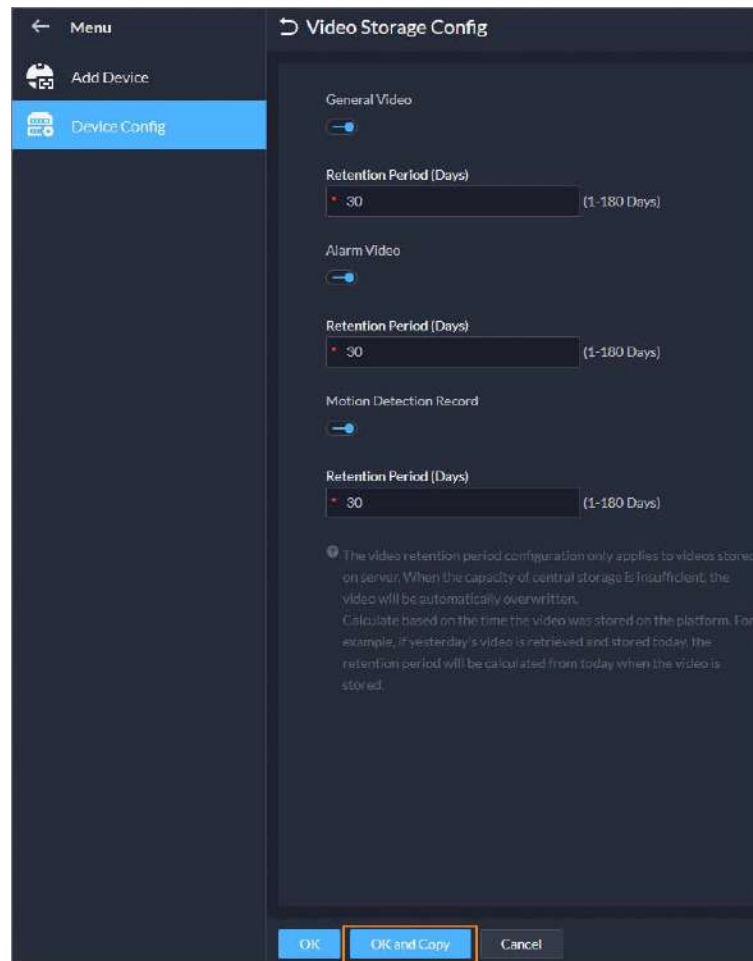
Figure 1-5 Automatic synchronization



1.3.4 Storage Management

Supports configuring the retention period of central recording for multiple channels in batches. After you have configured the retention periods for a channel, you can apply the configurations to multiple channels.

Figure 1-6 Configure retention periods in batches



1.3.5 Event

- Supports processing events in batches on the Real-time Event and Event History pages.

Figure 1-7 Process events in batches

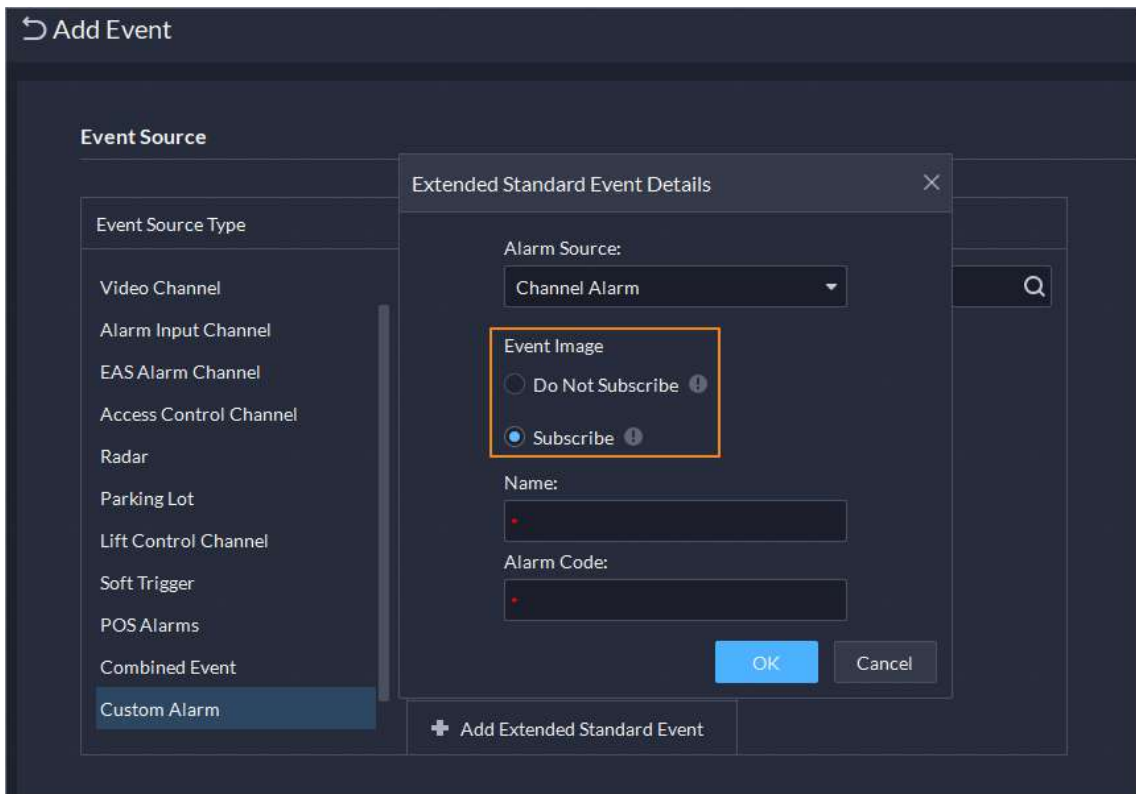
Alarm Time	Site Name	Alarm Category	Alarm Type	Alarm Source	Priority	Remarks	Alarm Status
2023-06-07 13:56:14	Current Site	VTO14-6conf_img.chann...	High		Processed
2023-06-07 13:56:13	Current Site	VTO14-6conf_img.chann...	High		Processed
2023-06-07 13:56:13	Current Site	VTO14-6conf_img.chann...	High		Processing
2023-06-07 13:56:13	Current Site	VTO14-6conf_img.chann...	High		Not Processed
2023-06-07 13:56:12	Current Site	VTO14-6conf_img.chann...	High		Not Processed
2023-06-07 13:56:11	Current Site	VTO14-6conf_img.chann...	High		Not Processed
2023-06-07 13:56:10	Current Site	VTO14-6conf_img.chann...	High		Not Processed
2023-06-07 13:56:09	Current Site	VTO14-6conf_img.chann...	High		Not Processed
2023-06-07 13:56:08	Current Site	VTO14-6conf_img.chann...	High		Not Processed
2023-06-07 13:56:06	Current Site	VTO14-6conf_img.chann...	High		Not Processed
2023-06-07 13:56:06	Current Site	VTO14-6conf_img.chann...	High		Not Processed
2023-06-07 13:56:06	Current Site	VTO14-6conf_img.chann...	High		Not Processed
2023-06-07 13:56:06	Current Site	VTO14-6conf_img.chann...	High		Not Processed

- Supports mandatory remarks for processing events. When a user is processing an event, the user must enter remarks.
- Supports configuring pre-processing remarks for events. When users are processing an event, the defined remarks will be filled in by default.

Figure 1-8 Mandatory and pre-processing remarks

- Support subscribing to images of custom alarms. After subscribing, the platform can receive images from the alarms.

Figure 1-9 Subscribe to images



- Supports loop and override modes. When alarms are triggered, specified video channels will be opened on video walls.
 - ◇ Override mode: When an alarm occurs, a live video is opened on the specified window of a video wall. For example, if the live video of channel 1 is opened on window 1, another alarm is triggered. The platform will display the live video of channel 2 on window 1.
 - ◇ Loop mode: Linked live videos will be displayed on windows of a video wall according to the order of windows. If there are no available window, the first window will be used. The number at the end of the name of a window indicates its order. For example, window(2) indicates it is the second window.

Figure 1-10 Alarm on video wall mode

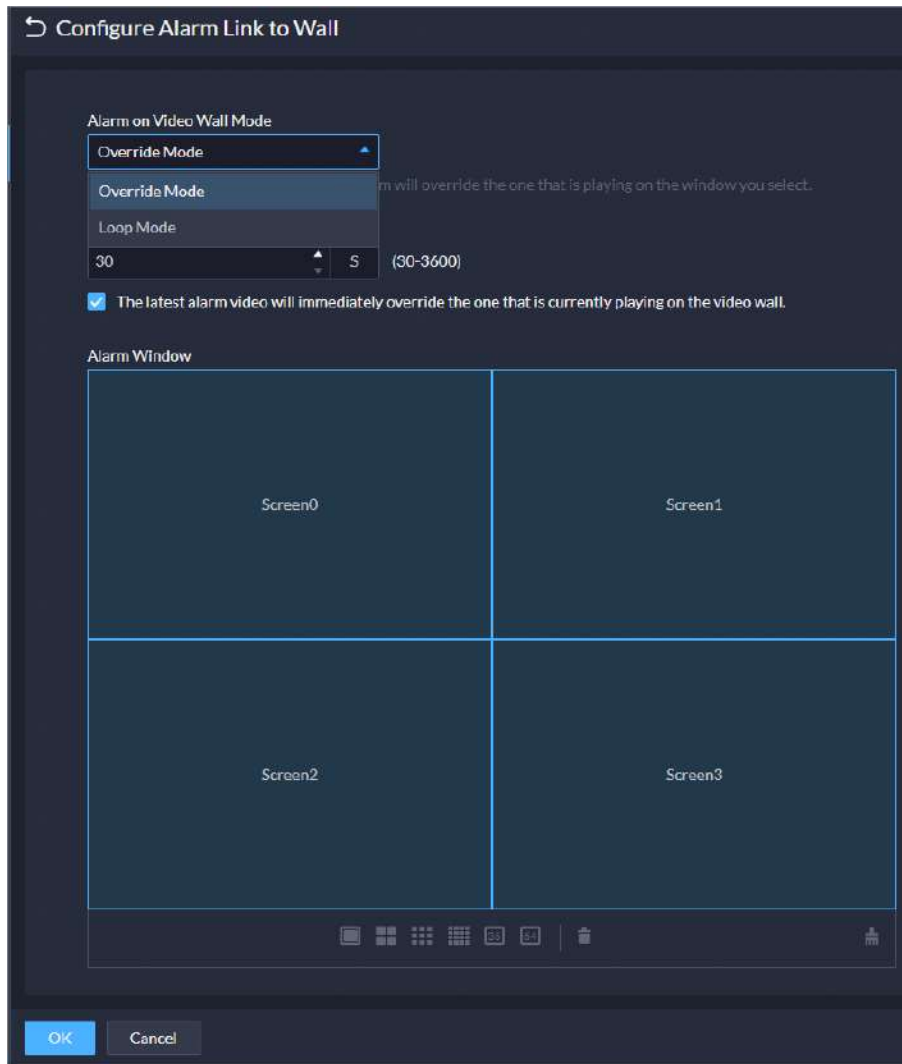
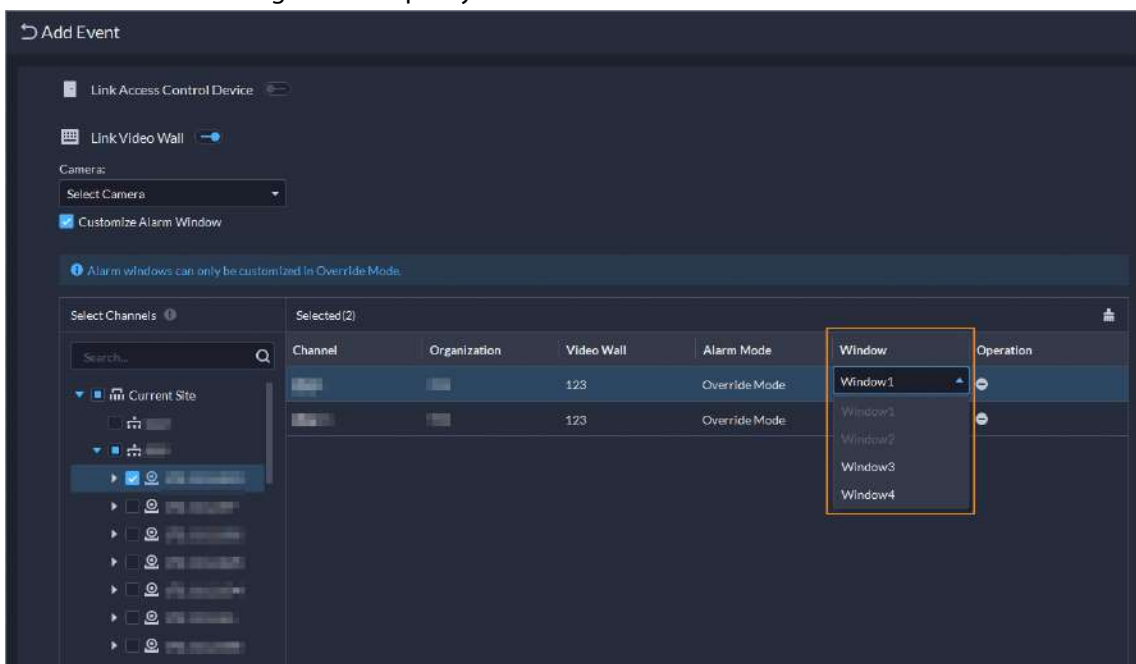
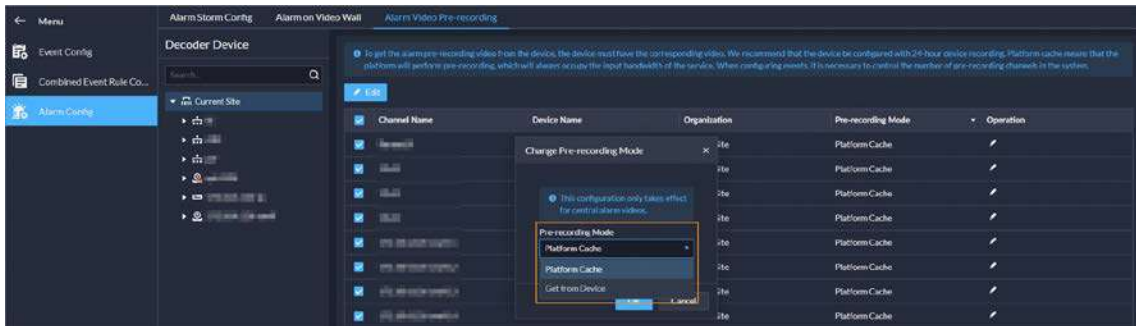


Figure 1-11 Specify window in override mode



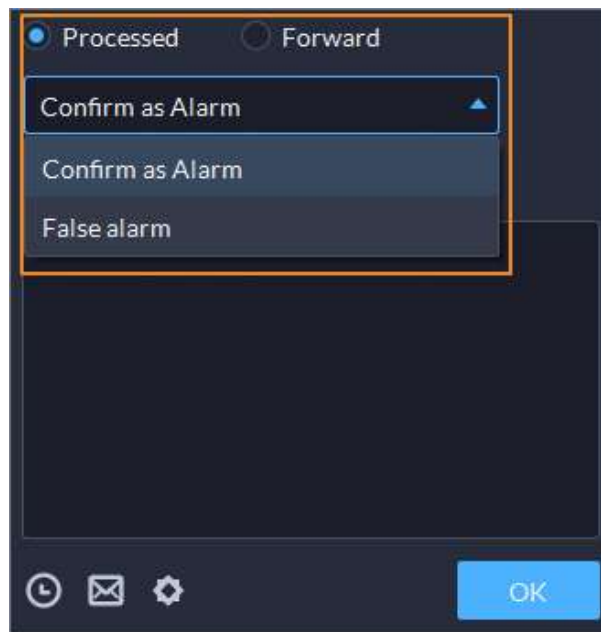
- Support setting the alarm video pre-recording mode for devices in batches, including platform cache or on the device.

Figure 1-12 Configure pre-recording mode in batches



- When processing events, the processing methods include processed (confirm as alarm, false alarm) and forward.

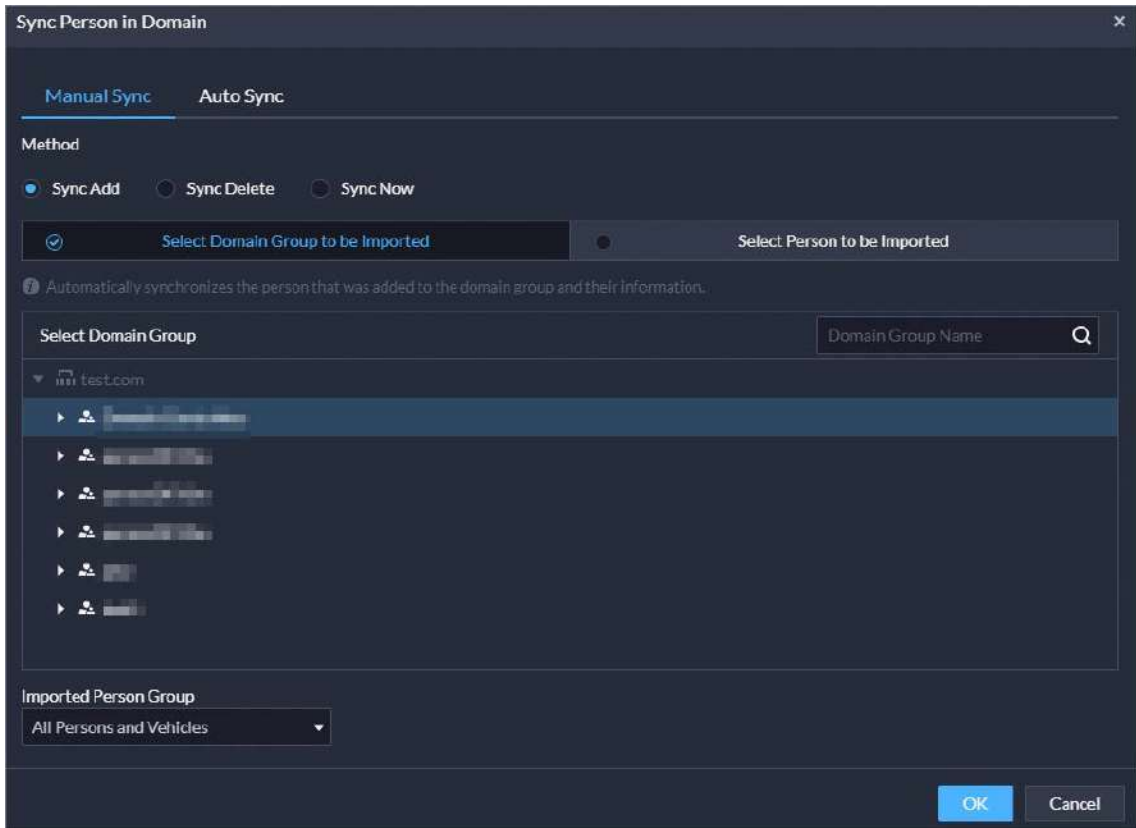
Figure 1-13 How alarms can be processed



1.3.6 Person and Vehicle Management

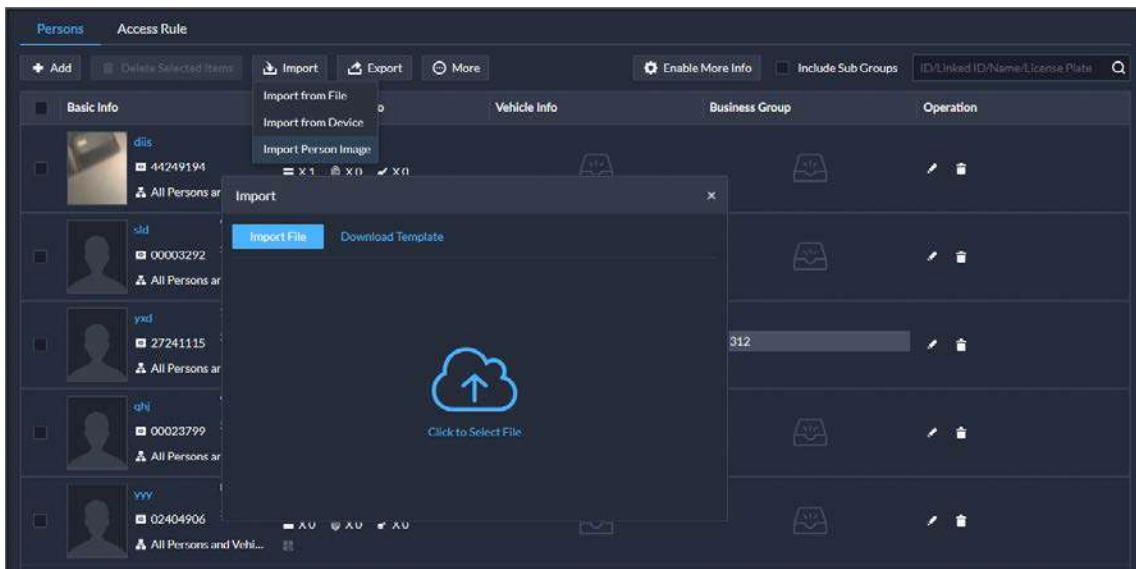
- Supports importing domain users as persons by group and by user, and automatic synchronization of person information.
 - ◇ You can import an entire group, or certain people in a group.
 - ◇ The automatic synchronization will import new people to the platform and update the information of existing people.

Figure 1-14 Imports domain users as people



- For people that have been added to the platform, you can import images in batches to set their images at the same time.

Figure 1-15 Import images of people in batches



- Support granting people access rights through access rules.

Figure 1-16 Configure access rules for a person

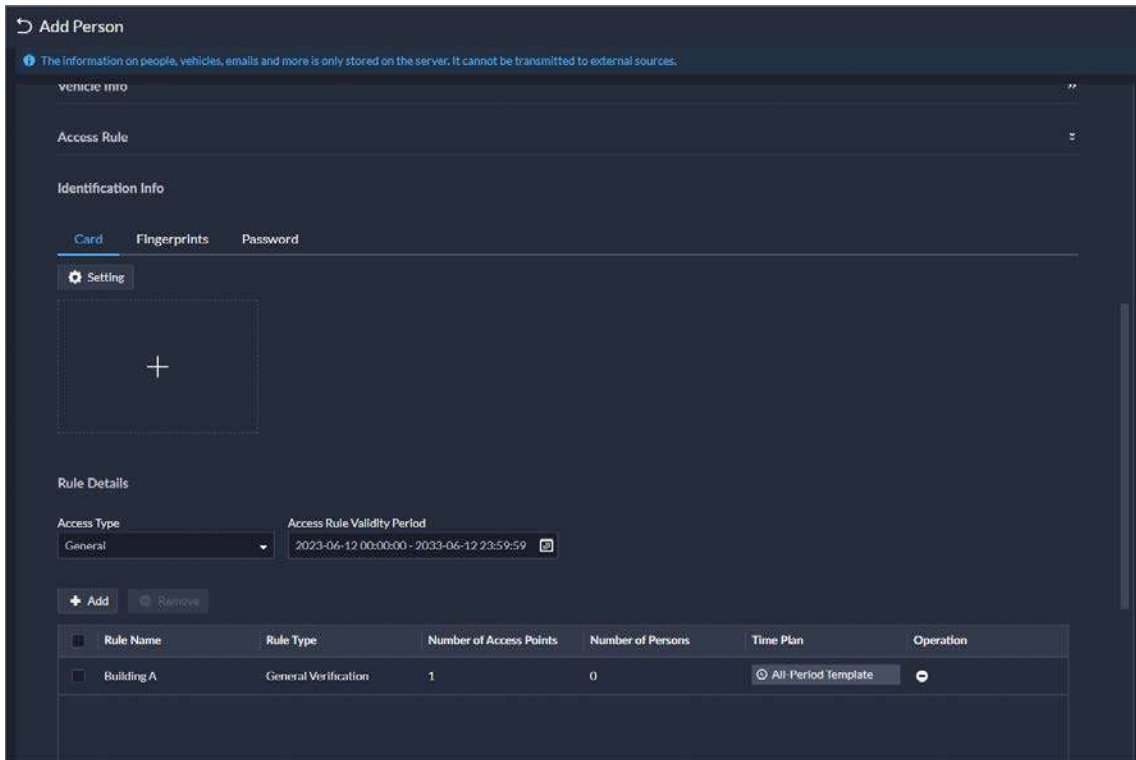


Figure 1-17 Configure access rules for a person group



- Supports creating App accounts for people in simple steps. This function is only available for homeowner. After you select the option, you must enter an email address in Basic Info. It will be used as the username for the person to log in to DSS Agile VDP. After the person is added, the platform will send the username and password to the email address.

Figure 1-18 Create Appaccount in simple steps

1.3.7 Monitoring Center

- Added public view and private view.
 - ◊ You can create public view groups that only specified roles and their users can access the resources in them. Only administrators have permission to configure public views.

Figure 1-19 View group

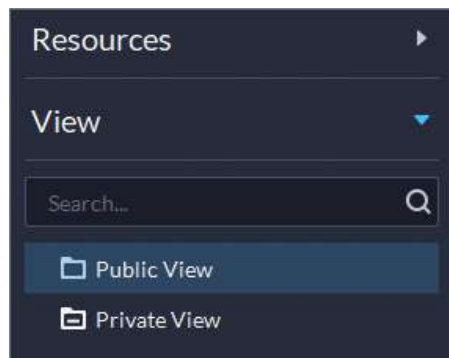


Figure 1-20 Roles and users that are allowed to access public view groups

Only administrators can edit the public view groups and the public views in them. Normal users can only access the public view groups.

Basic Info

View Group Name
Public view group 1

Remarks

Roles Allowed Access

Select Roles	Selected Roles								
<input type="checkbox"/> Super Administrator	<table border="1"><thead><tr><th>Role</th><th>Operation</th></tr></thead><tbody><tr><td>Super Administrator</td><td>👁</td></tr><tr><td>Administrator</td><td>👁</td></tr><tr><td>Operator</td><td>👁 -</td></tr></tbody></table>	Role	Operation	Super Administrator	👁	Administrator	👁	Operator	👁 -
Role	Operation								
Super Administrator	👁								
Administrator	👁								
Operator	👁 -								
<input type="checkbox"/> Administrator									
<input checked="" type="checkbox"/> Operator									

- ◇ You can create private view groups. The private views are configured and owned by each user, and can be shared to other users. Users who are shared with the view will receive a notification.

Figure 1-21 Share views

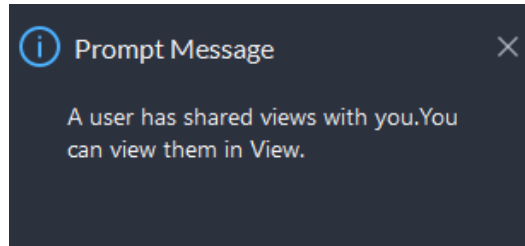
Share View

Share With
xing

Remark
Shared a view.

OK Cancel

Figure 1-22 Notification



- Added AcuPick that can automatically identify all kinds of targets in the video and you can select one and quickly go to DeepXplore to search for that target.

Figure 1-23 AcuPick in live videos

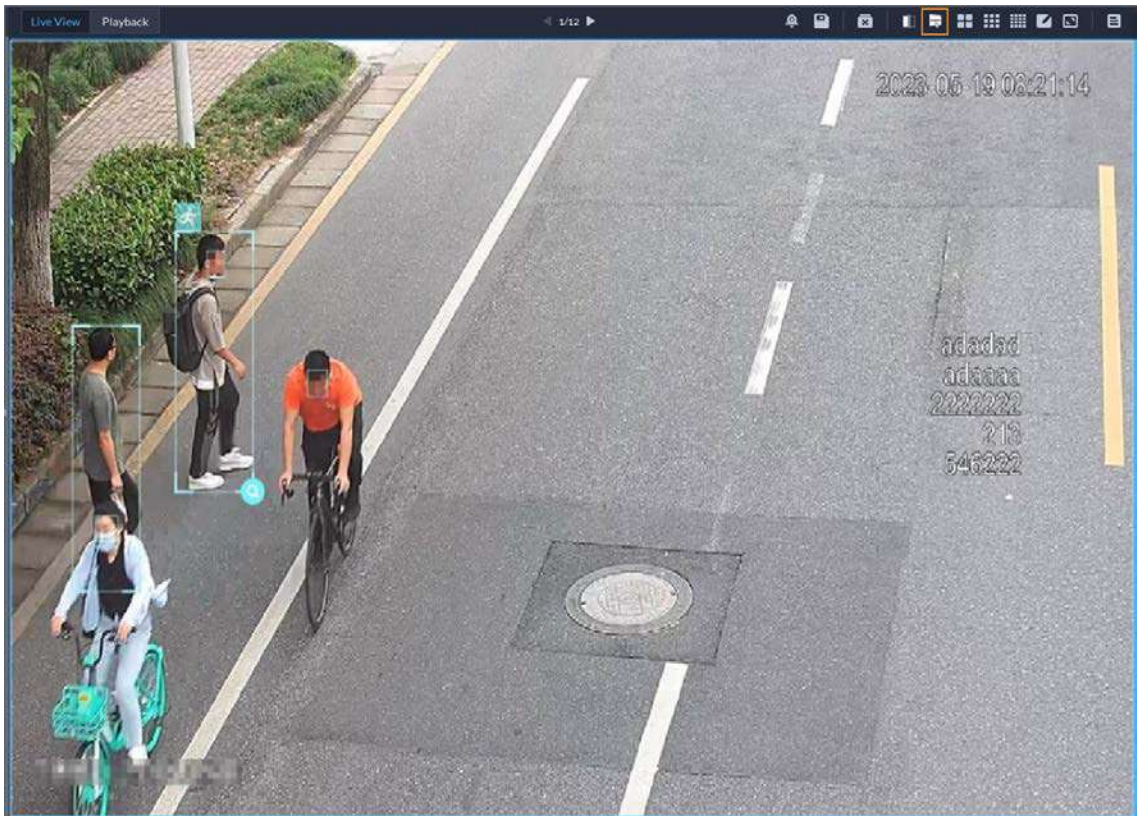
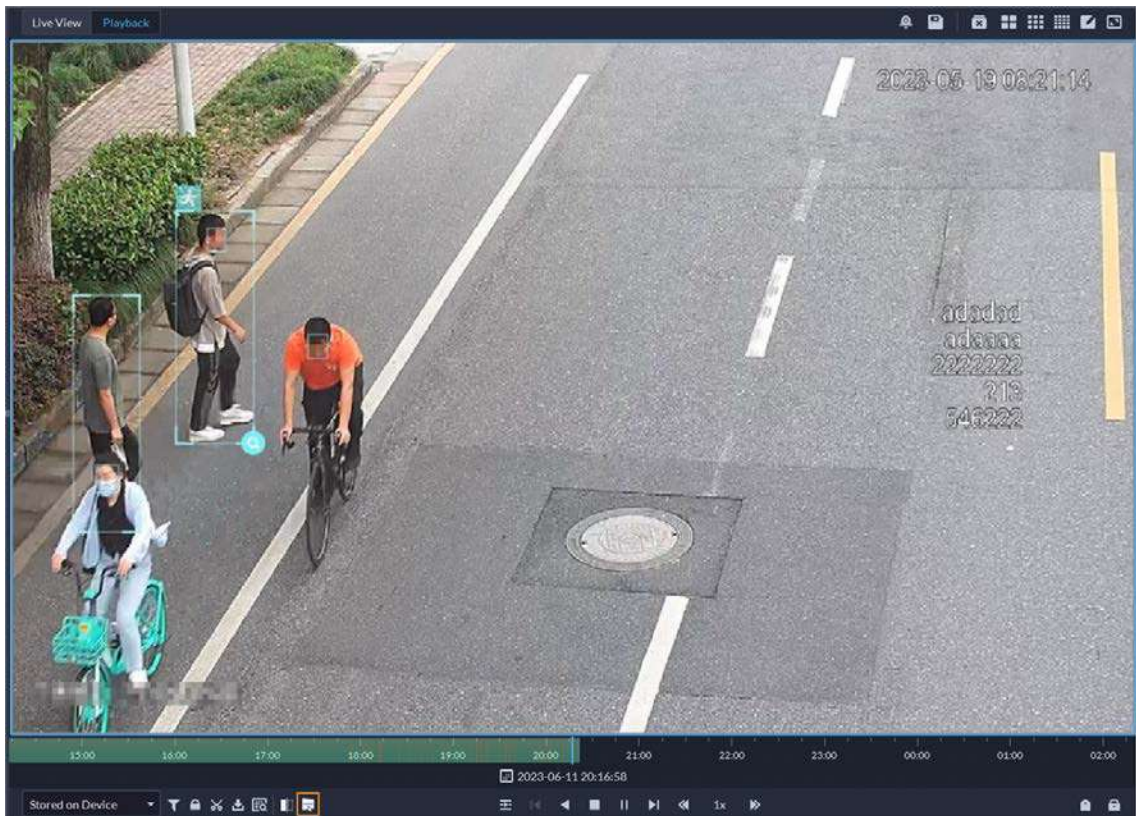
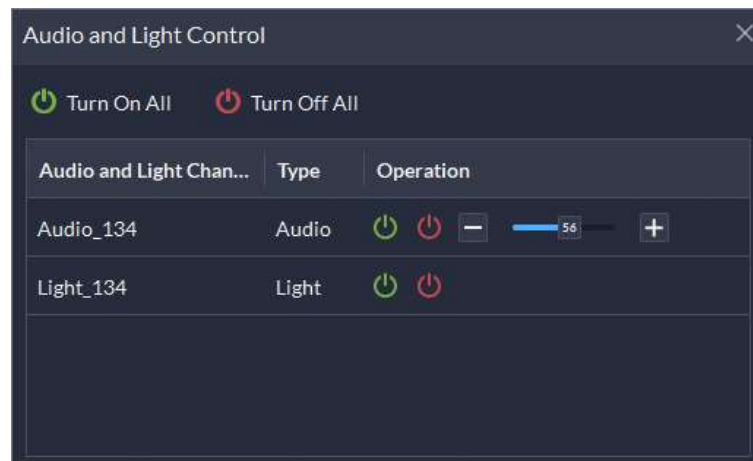


Figure 1-24 AcuPick in playback



- Supports adjusting the volume of TiOC cameras.

Figure 1-25 Adjust volume



- Supports multi-level management of favorites and sharing to other users. The maximum level of favorites can be up to 10.

Figure 1-26 Manage favorites folders

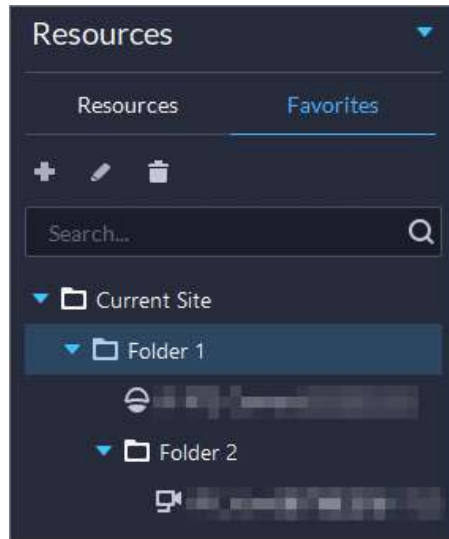
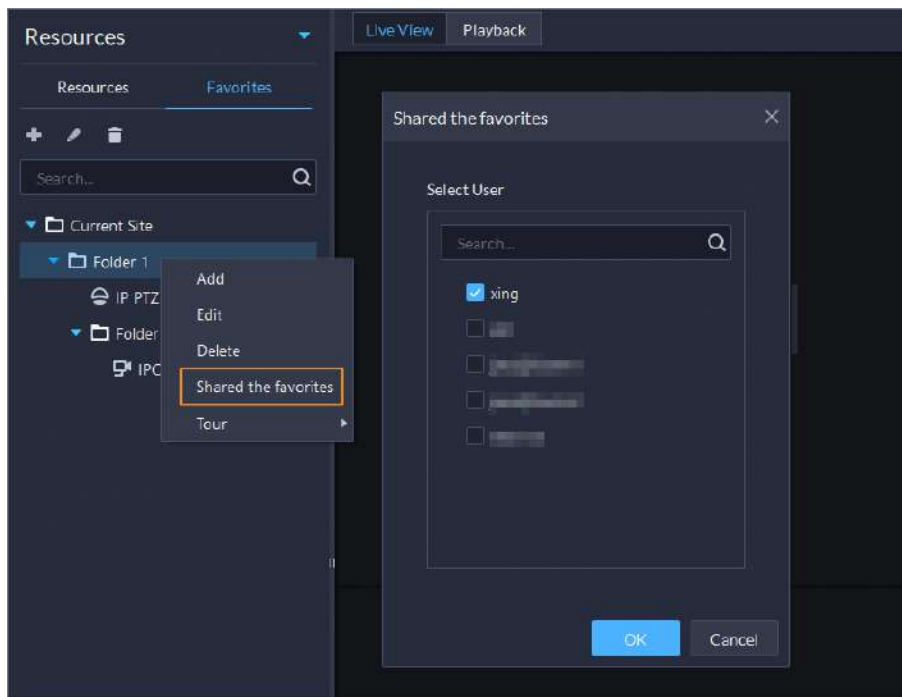
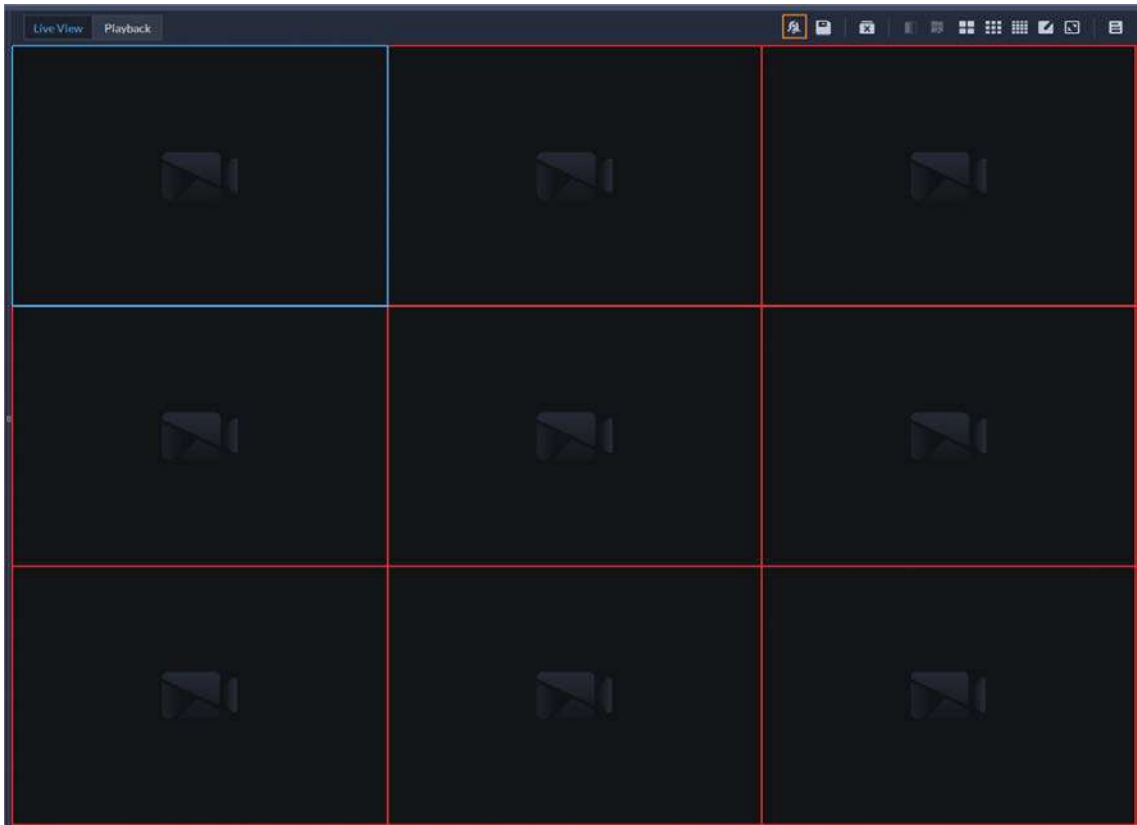


Figure 1-27 Share a folder to other users



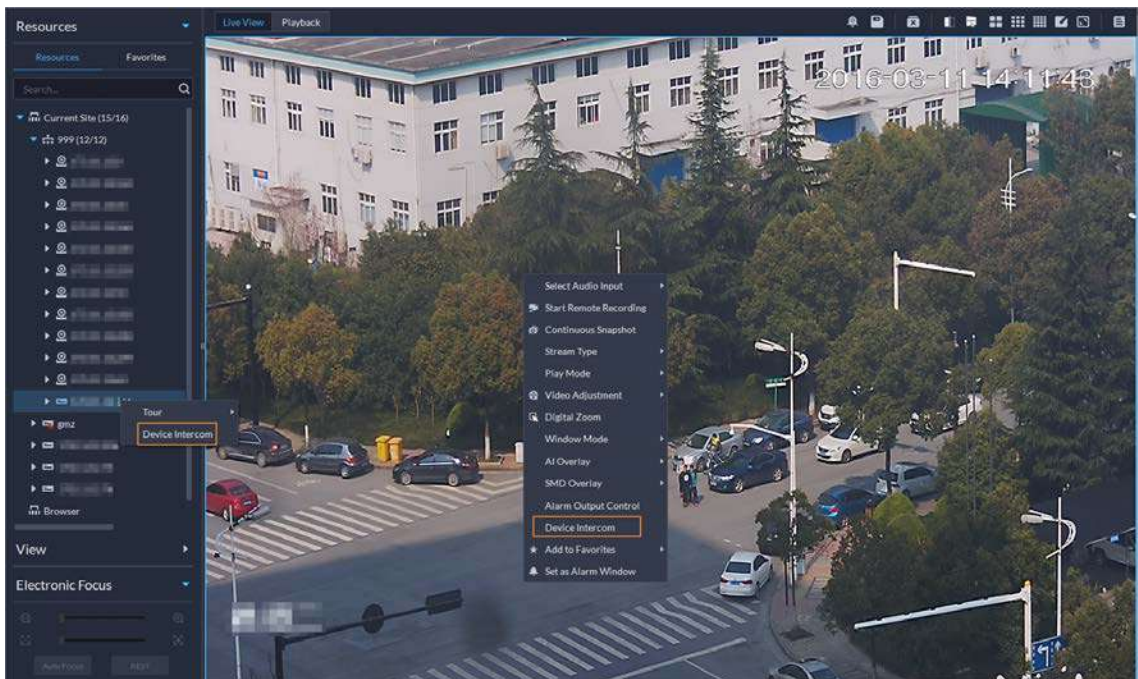
- Supports setting all windows as alarm windows in one click.

Figure 1-28 Set alarm windows in one click



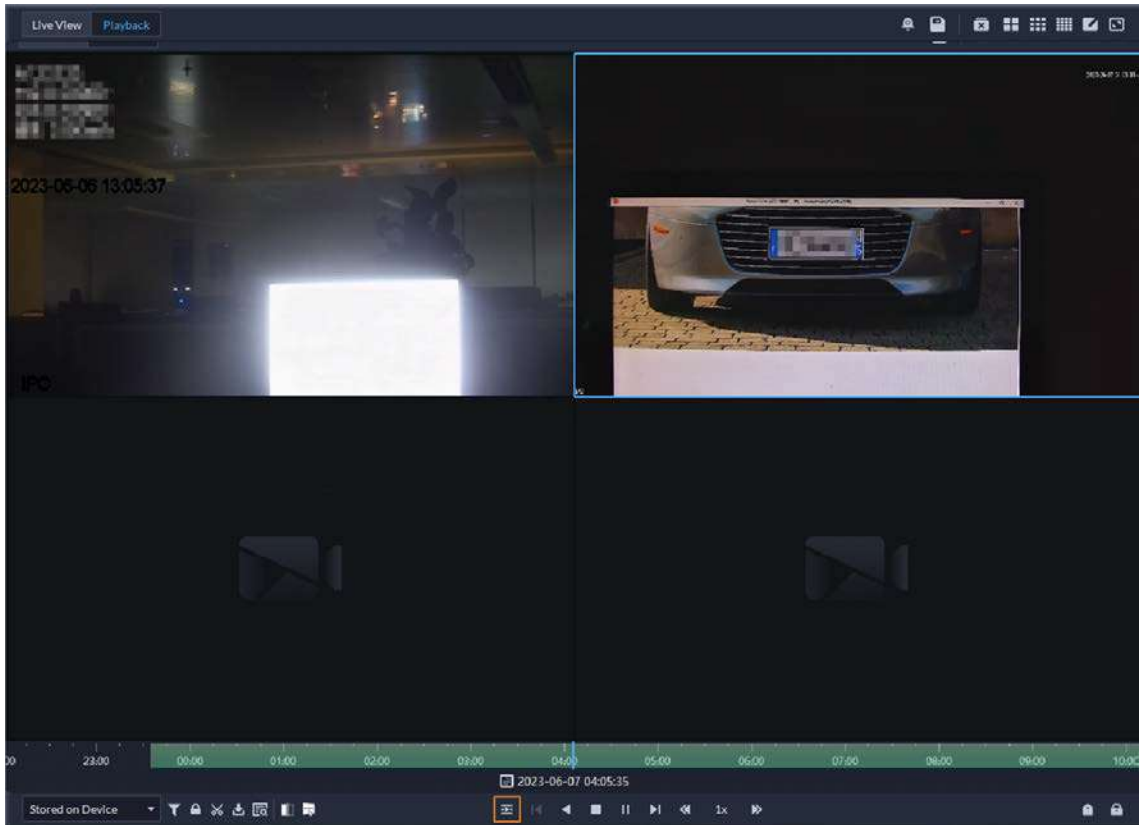
- Supports audio intercom with NVR, XVR, IVSS, and EVS.

Figure 1-29 Audio intercom



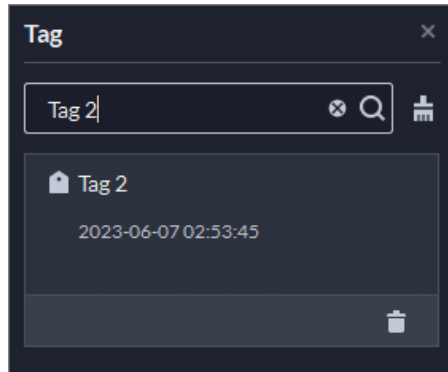
- Supports synchronous playback of recordings from multiple channels.

Figure 1-30 Synchronous playback



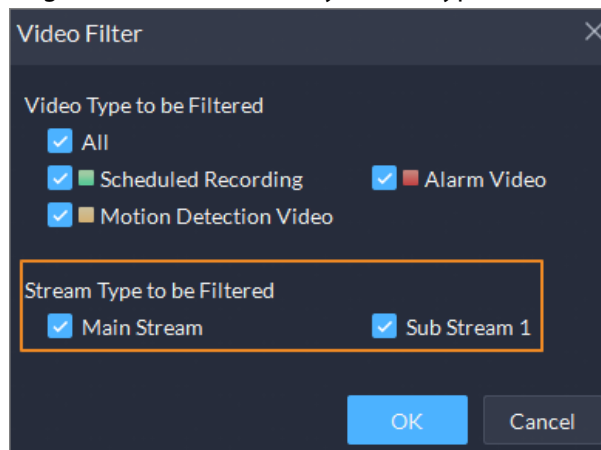
- Support searching for video tags.

Figure 1-31 Search for tags



- When playing back videos stored on devices, you can filter videos by main stream and sub stream.

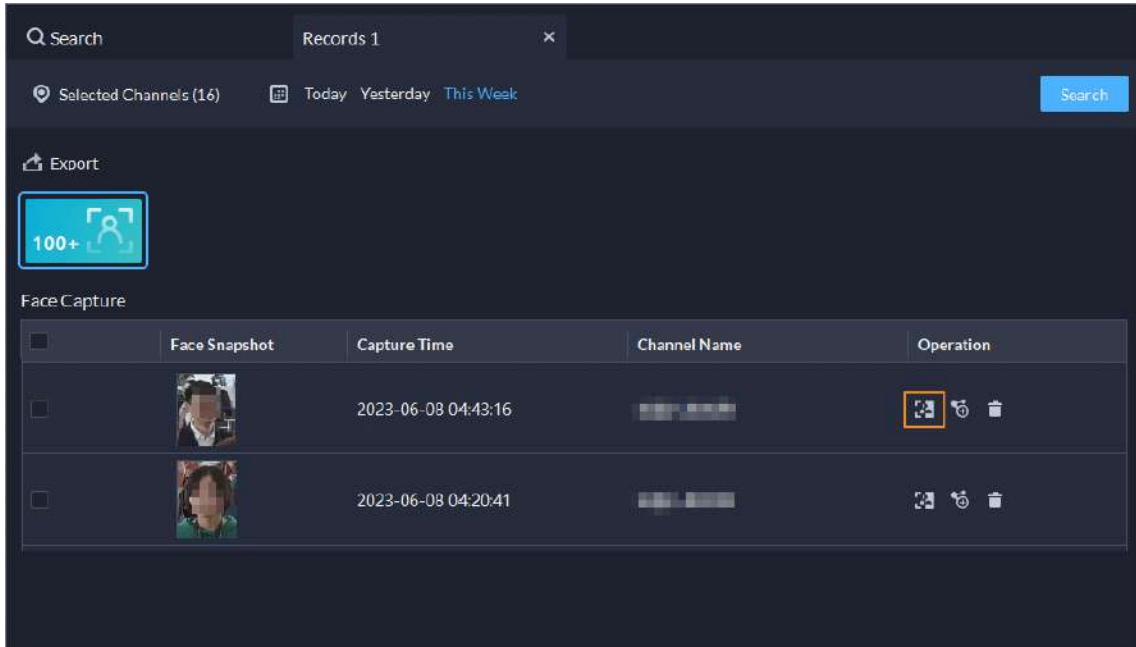
Figure 1-32 Filter videos by stream type



1.3.8 DeepXplore

Supports adding faces in the search results to arming lists.

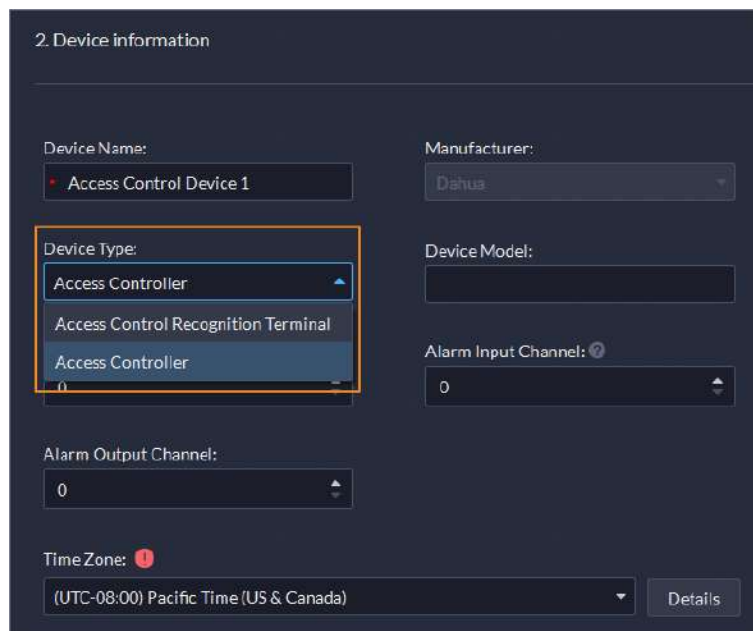
Figure 1-33 Add to arming list



1.3.9 Access Control

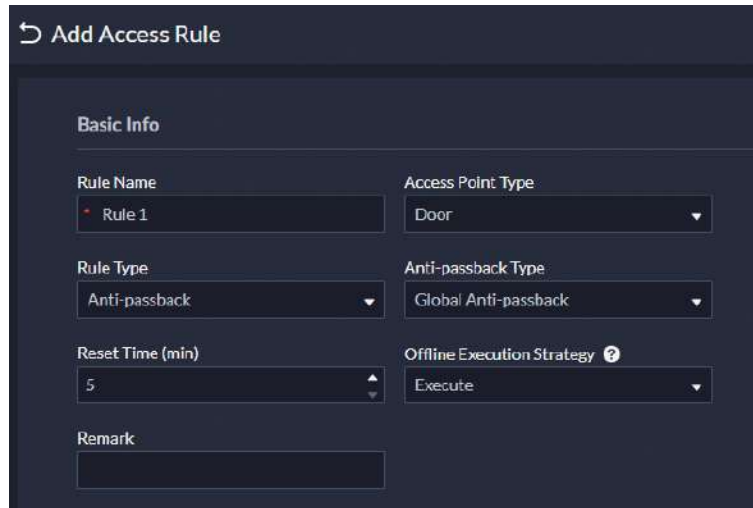
- Access control devices are categorized into:
 - ◇ Access control recognition terminals: Devices that can authenticate faces, fingerprints, cards, and more.
 - ◇ Access controllers: Regular and integrated access controllers.

Figure 1-34 Access control device type



- Added global anti-passback that you can configure an anti-passback route based on the door channels in a zone. And you can configure the offline operation strategy at the same time:
 - ◇ Execute: When the network is abnormal, access points will execute the anti-passback configurations.
 - ◇ Do Not Execute: When the network is abnormal, access points will not execute any anti-passback configurations, and people can pass normally.

Figure 1-35 Global anti-passback



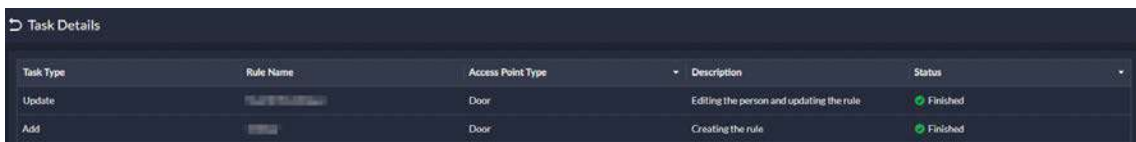
- Supports checking the people on a device against those on the platform, and quickly address issues if any occurs.

Figure 1-36 Consistency verification



- Added the Task Details page where you can view the progress of applying access rules to access points.

Figure 1-37 Task details



- Door and lift control is combined into access control based on zones and access points.
 - ◇ Manage zones. Access points are managed in different zones. Each zone can be configured with a map, and different permissions that only specified roles and their users can access a zone.

Figure 1-38 Zone management

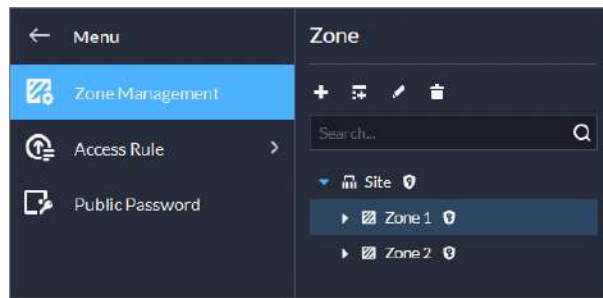
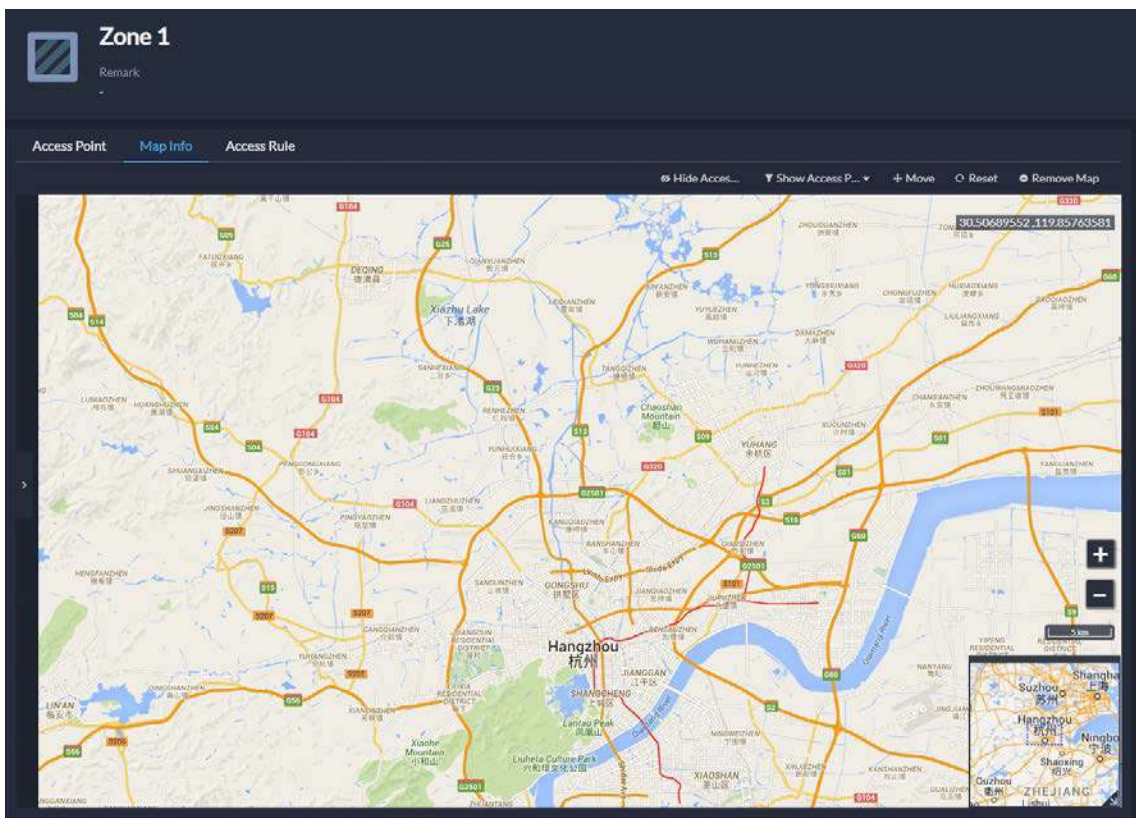


Figure 1-39 Map of a zone



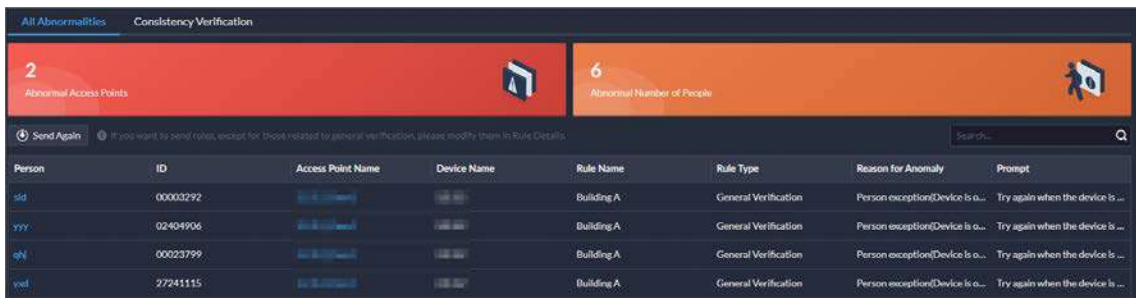
- ◇ Configure access rules to grant people access.

Figure 1-40 Configure access rules



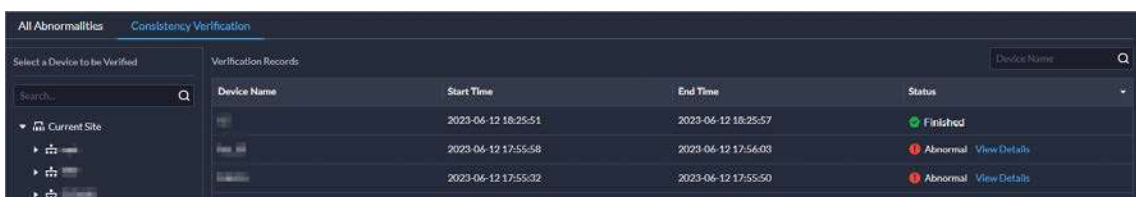
- ◇ Maintain access rules. View exceptions that happen when access rules are being applied to access points. You can handle the exceptions accordingly and then quickly apply them again in one click.

Figure 1-41 Maintain access rules



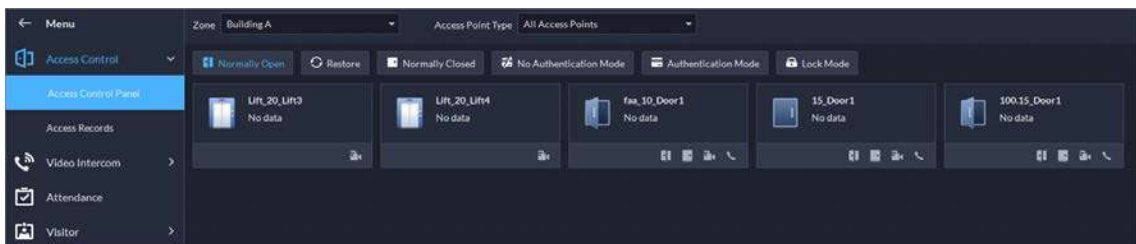
- ◇ Use the consistency verification to quickly check the people on a device against those on the platform, and quickly address issues if any occurs.

Figure 1-42 Consistency verification



- ◇ In the access control panel, door and lift channels in different zones can be viewed and controlled.

Figure 1-43 Access control panel



- ◇ For access records, you can view historical access events, analysis on people entering and exiting, and the movement path of people.

Figure 1-44 Access records

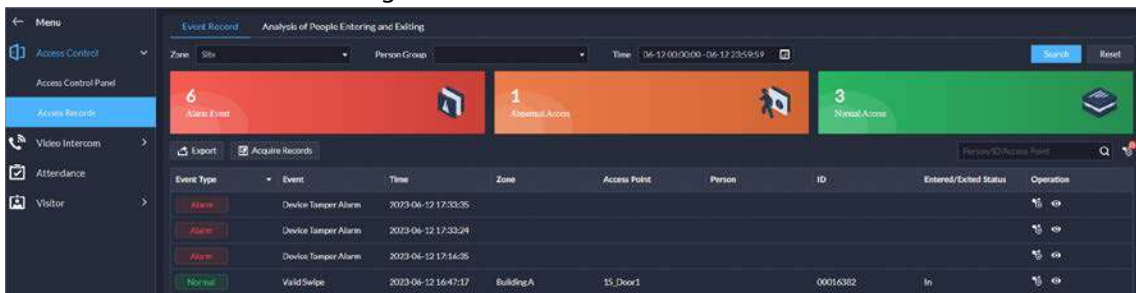


Figure 1-45 Analysis of people entering and exiting

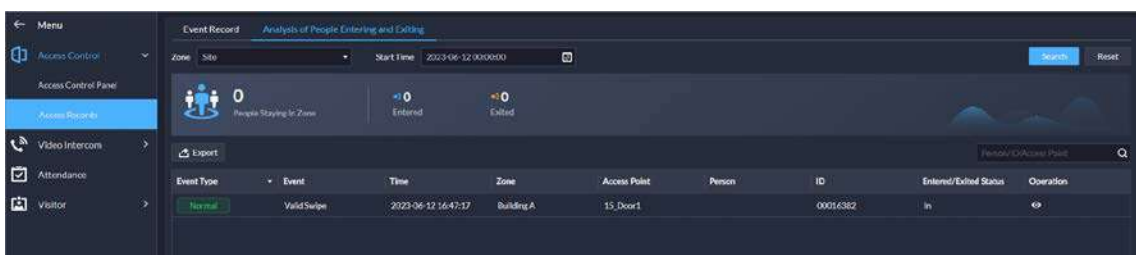
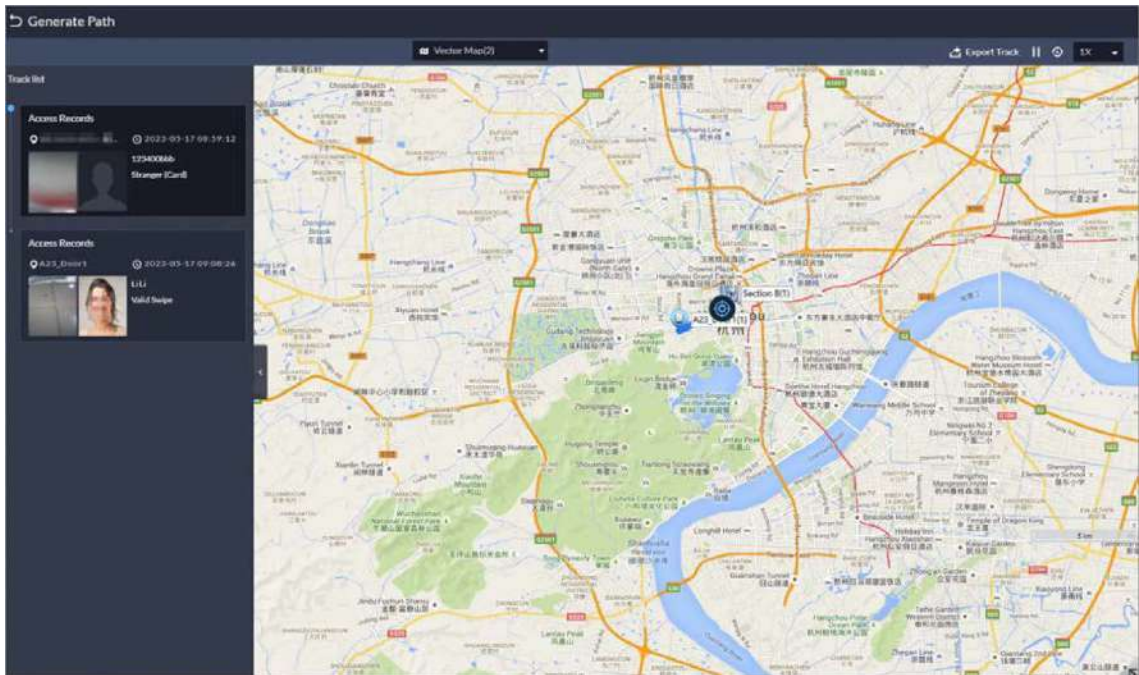


Figure 1-46 Access route



1.3.10 Visitor

When registering a visitor, the arrival time will be the current time and cannot be changed.

Figure 1-47 Register on site

Visit Details

Visit Details Authentication Authorization

Host Name: Host Company (Department):

Host Email Address:

Visitor Name: Visitor Company:

ID Type: ID No.:

ID Card

Phone No.: Email Address:

Plate No.: Reason for Visit:

Arrival Time: 2023-06-12 16:35:54

Appointment Leaving Time: 2023-06-12 18:35:54

Remarks:

1.3.11 Attendance

Supports changing the time format for attendance reports, and the overtime and away records.

Figure 1-48 Time format

Menu Access Control Video Intercom Attendance Visitor Visitor Management Visitor Records

Card Swiping Records Attendance Report Exception Overtime Away

Time: 06-12 00:00:00 - 06-12 23:59:59

ID:

Name:

Person Group: All Persons and Vehicles

Time Format: Hours/Minutes

Export Sync Offline Records

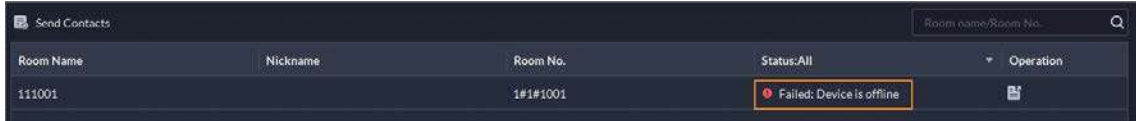
Date ID Name Person Group

Search

1.3.12 Video Intercom

The reasons will be displayed when contacts and private passwords are failed to be sent.

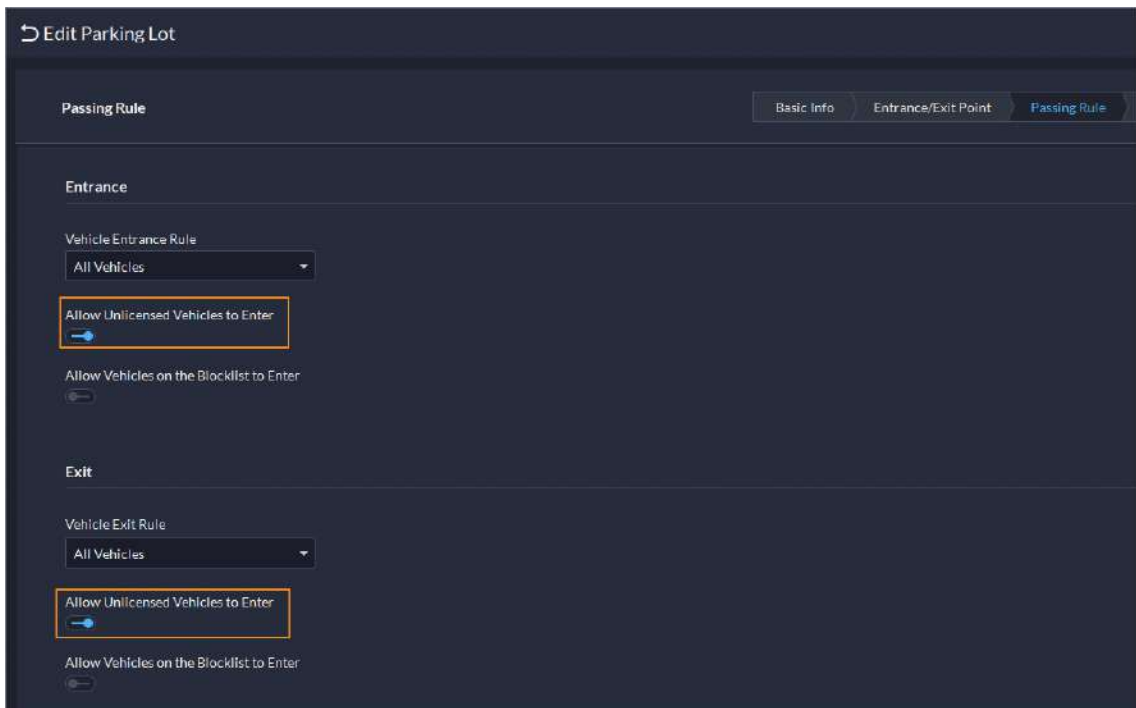
Figure 1-49 Reasons for failed to send contact



1.3.13 Parking Lot

When configuring the passing rule for a parking lot, if you select **All Vehicles**, you can choose whether to allow unlicensed vehicles to enter or exit. If this function is enabled, all vehicle without license plates will be able to enter or exit the parking lot.

Figure 1-50 Allow unlicensed vehicles to enter

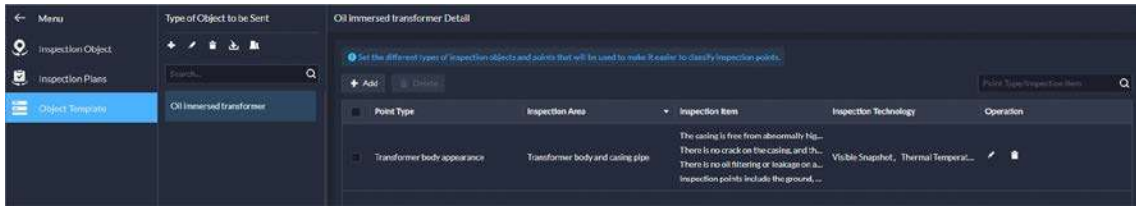


1.3.14 Intelligent Inspection

Added the intelligent inspection function. The platform can regularly use HD cameras and thermal imaging technology to inspect devices, such as power equipment, or an area, and collect images and temperatures during the process.

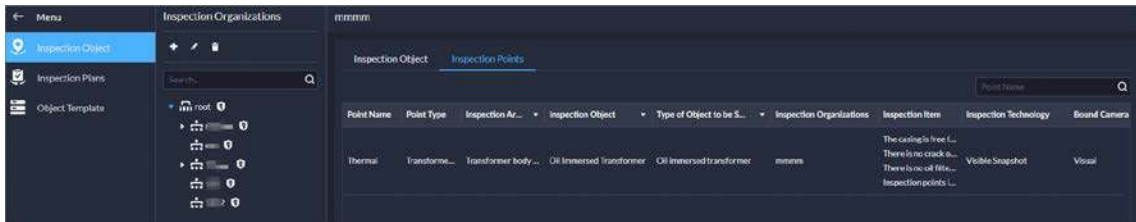
- Configure frequently used object types and inspection points. When you are configuring an actual inspection point, you can select them to automatically fill in most of the information.

Figure 1-51 Object template



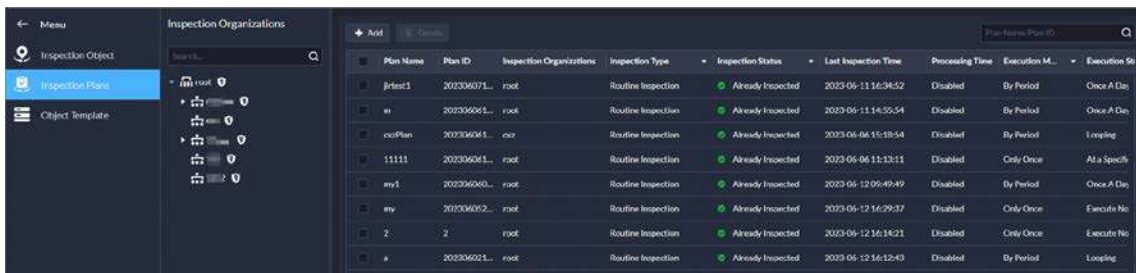
- Add inspection objects to so that the platform can inspect one or more points.

Figure 1-52 Inspection objects and points



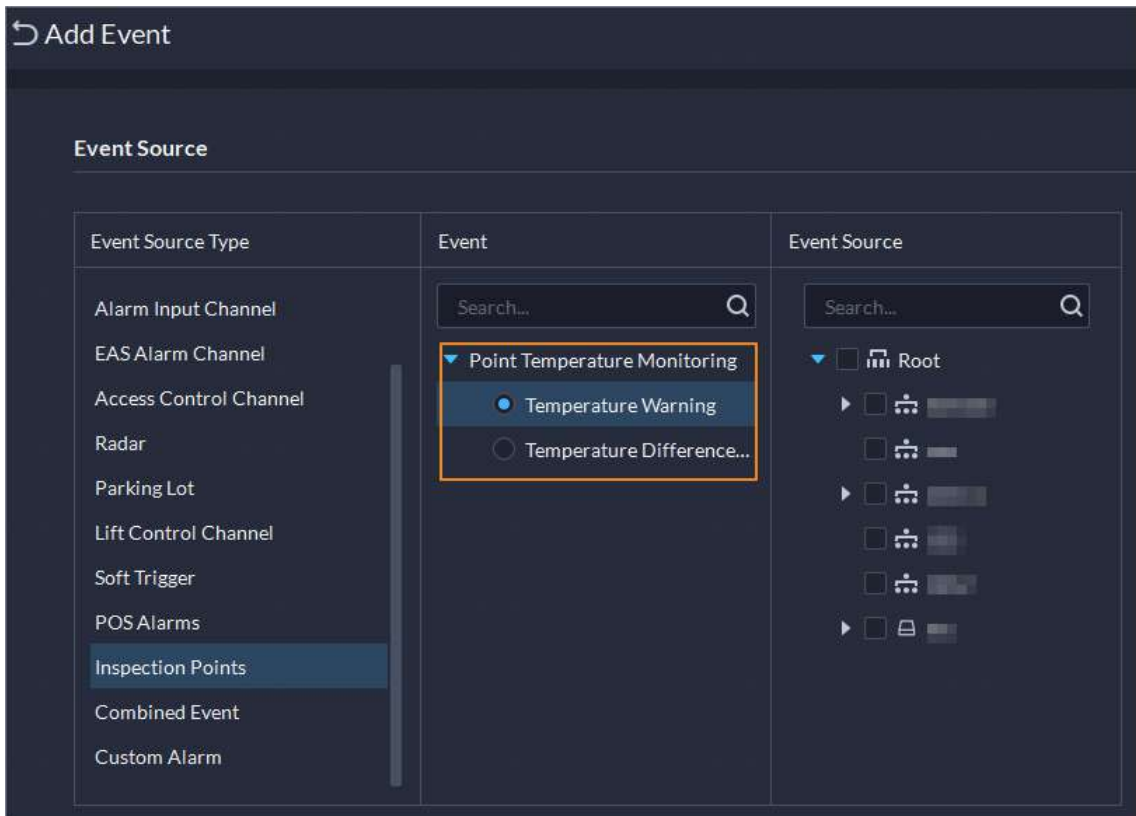
- During the set periods, the platform will inspect the objects and points you selected, and save related data to the platform.

Figure 1-53 Inspection plan



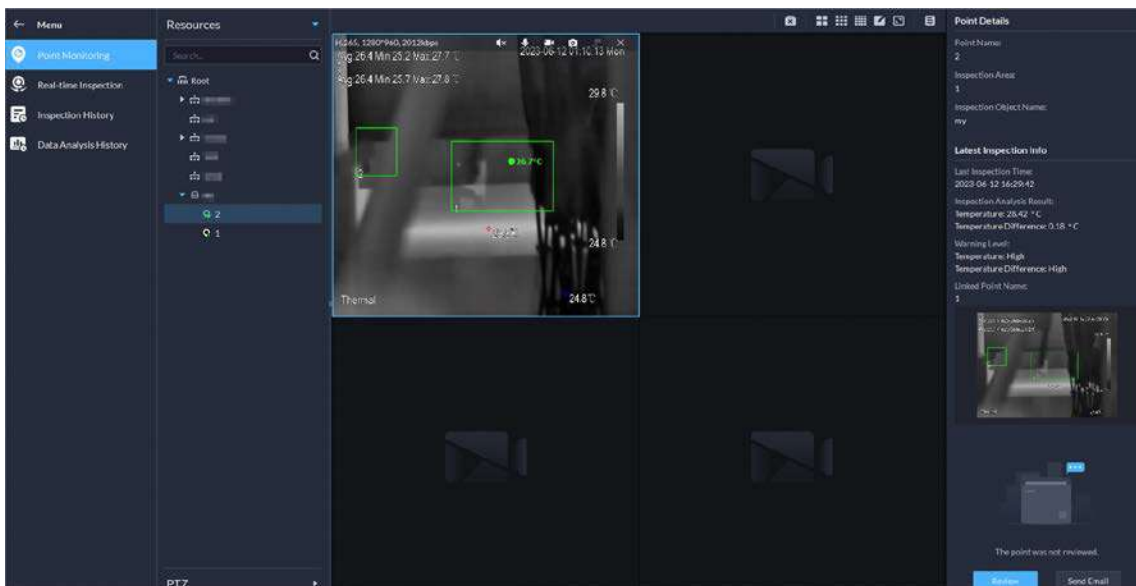
- You can configure events to perform linkage actions when thresholds are reached. For example, an inspection point monitored a temperature that is greater than the threshold, a camera will record a video of the area it is monitoring.

Figure 1-54 Point temperature monitoring events



- View the live videos, basic information, and inspection results of points. You can review the results.

Figure 1-55 Point monitoring



- View the status of inspection plans, and the real-time videos of points in inspection plans. You can also manually execute inspection plans.

Figure 1-56 Inspection plan status

Plan Name	Plan ID	Inspection Ty...	Inspection Organizations	Inspection St...	Last Inspection Time	Processing Time	Execution M...	Execution Strategy	Enable (Yes/No)
202306071...	202306071...	Routine Inspection	root	Already Inspe...	2023-06-11 15:34:52	Disabled	By Period	Once A Day	Yes
202306061...	202306061...	Routine Inspection	root	Already Inspe...	2023-06-11 14:55:54	Disabled	By Period	Once A Day	Yes
202306061...	202306061...	Routine Inspection	ocr	Already Inspe...	2023-06-04 15:18:54	Disabled	By Period	Looping	No
202306061...	202306061...	Routine Inspection	root	Already Inspe...	2023-06-06 11:13:11	Disabled	Only Once	At a Specified Time	Yes
202306060...	202306060...	Routine Inspection	root	Already Inspe...	2023-06-12 09:49:49	Disabled	By Period	Once A Day	Yes
202306052...	202306052...	Routine Inspection	root	Already Inspe...	2023-06-12 15:29:37	Disabled	Only Once	Execute Now	No
2	2	Routine Inspection	root	Already Inspe...	2023-06-12 15:14:21	Disabled	Only Once	Execute Now	Yes
202306021...	202306021...	Routine Inspection	root	Already Inspe...	2023-06-12 15:12:43	Disabled	By Period	Looping	Yes

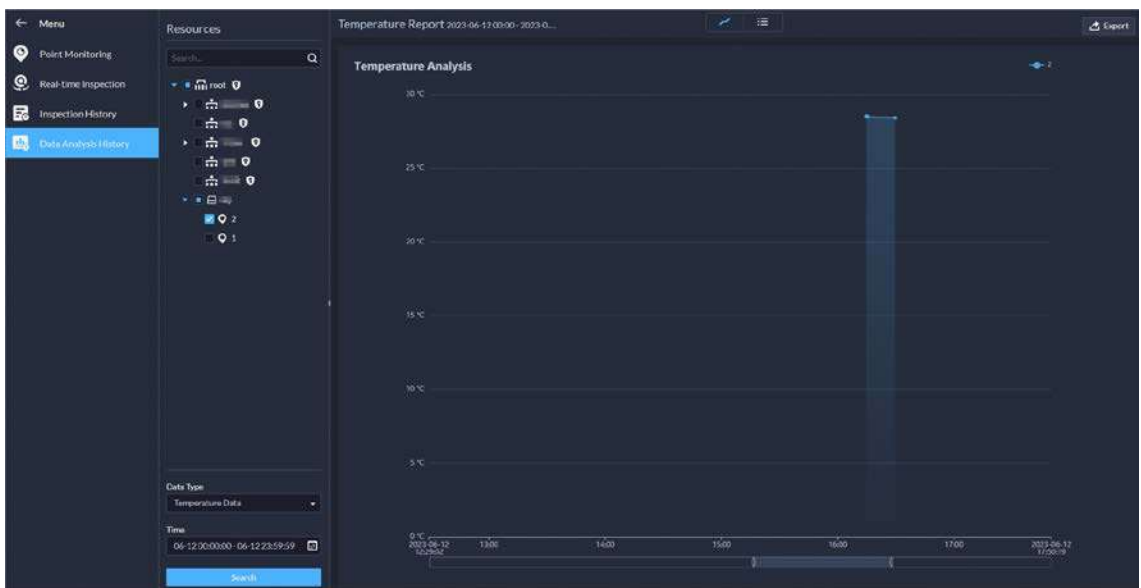
- Search for and view all execution records of inspections.

Figure 1-57 Inspection records

Plan Name	Plan ID	Inspection Organizations	Plan Type	Start Time	End Time	Time Used for Ins...	Remaining Processing Time	Total Points	Warning Poi
202306062...	202306062...	root	Routine Ins...	2023-06-12 16:29:57	2023-06-12 16:29:49	11Sec	Disabled	2	2
202306052...	202306052...	root	Routine Ins...	2023-06-12 16:15:07	2023-06-12 16:15:49	11Sec	Disabled	2	2
202306062...	202306062...	root	Routine Ins...	2023-06-12 16:14:53	2023-06-12 16:15:03	10Sec	Disabled	2	2
2	2	root	Routine Ins...	2023-06-12 16:14:21	2023-06-12 16:14:41	20Sec	Disabled	2	2
202306001...	202306001...	root	Routine Ins...	2023-06-12 16:12:43	2023-06-12 16:12:43	0Sec	Disabled	0	0
202306001...	202306001...	root	Routine Ins...	2023-06-12 16:12:42	2023-06-12 16:12:42	0Sec	Disabled	0	0
202306021...	202306021...	root	Routine Ins...	2023-06-12 16:12:41	2023-06-12 16:12:41	0Sec	Disabled	0	0
202306021...	202306021...	root	Routine Ins...	2023-06-12 16:12:40	2023-06-12 16:12:40	0Sec	Disabled	0	0
202306021...	202306021...	root	Routine Ins...	2023-06-12 16:12:39	2023-06-12 16:12:39	0Sec	Disabled	0	0
202306021...	202306021...	root	Routine Ins...	2023-06-12 16:12:38	2023-06-12 16:12:38	0Sec	Disabled	0	0
202306021...	202306021...	root	Routine Ins...	2023-06-12 16:12:37	2023-06-12 16:12:37	0Sec	Disabled	0	0
202306021...	202306021...	root	Routine Ins...	2023-06-12 16:12:36	2023-06-12 16:12:36	0Sec	Disabled	0	0
202306021...	202306021...	root	Routine Ins...	2023-06-12 16:12:35	2023-06-12 16:12:35	0Sec	Disabled	0	0
202306021...	202306021...	root	Routine Ins...	2023-06-12 16:12:34	2023-06-12 16:12:34	0Sec	Disabled	0	0
202306021...	202306021...	root	Routine Ins...	2023-06-12 16:12:33	2023-06-12 16:12:33	0Sec	Disabled	0	0
202306021...	202306021...	root	Routine Ins...	2023-06-12 16:12:32	2023-06-12 16:12:32	0Sec	Disabled	0	0
202306021...	202306021...	root	Routine Ins...	2023-06-12 16:12:31	2023-06-12 16:12:31	0Sec	Disabled	0	0

- View the analysis of temperature data, including temperature and temperature difference.

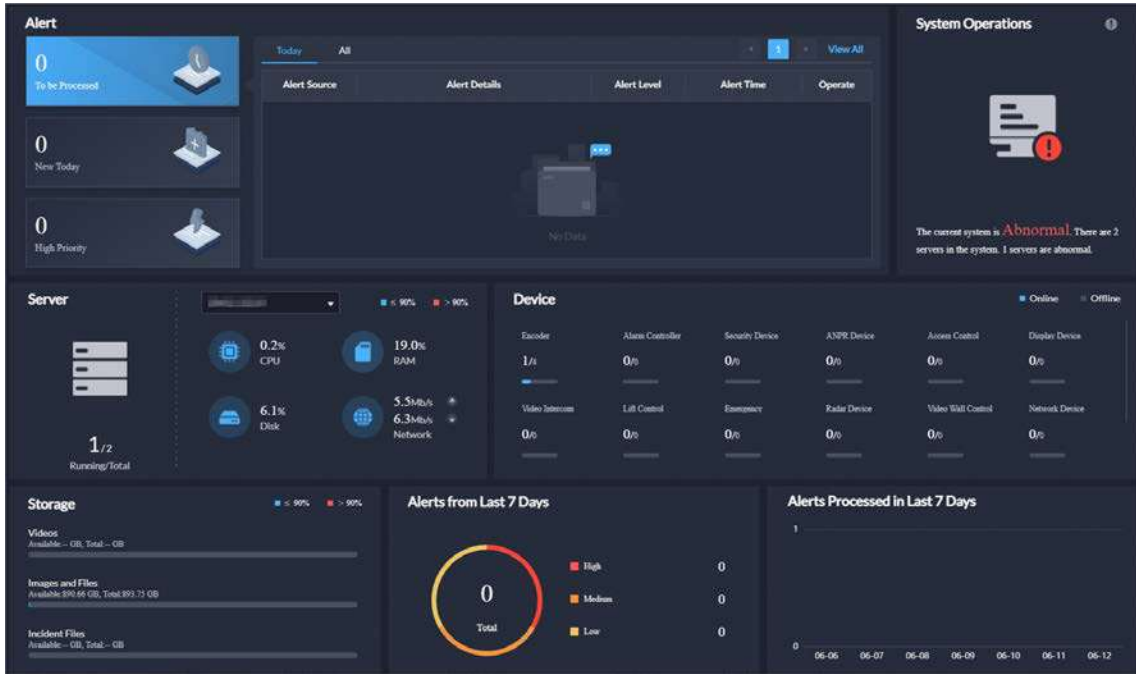
Figure 1-58 Search for temperature data



1.3.15 Maintenance Center

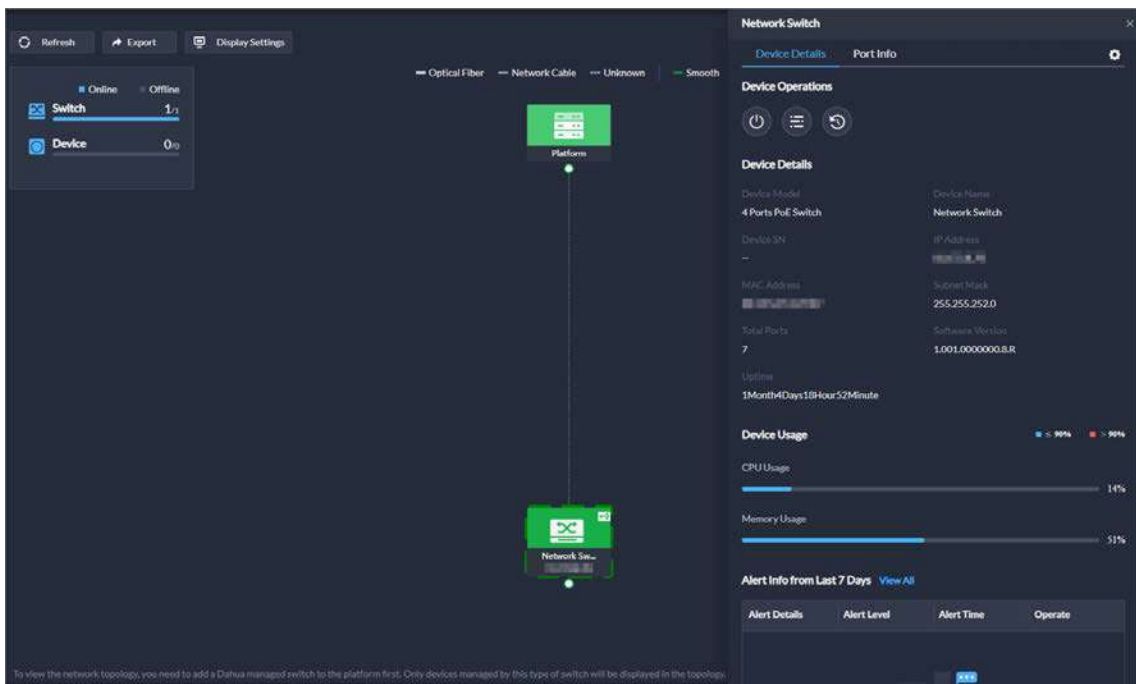
- Overview is changed to Workstation that displays the device running status, storage usage, server running status, and alerts.

Figure 1-59 Workstation



- Supports viewing the network topology and information of switches, and configuring their parameters.

Figure 1-60 Manage switches



- Add alerts. Configure alert rules to monitor the running status of devices and servers, such as services stop running or device disconnection. After alerts are triggered, you can process them and export relevant reports.

Figure 1-61 Trigger alerts

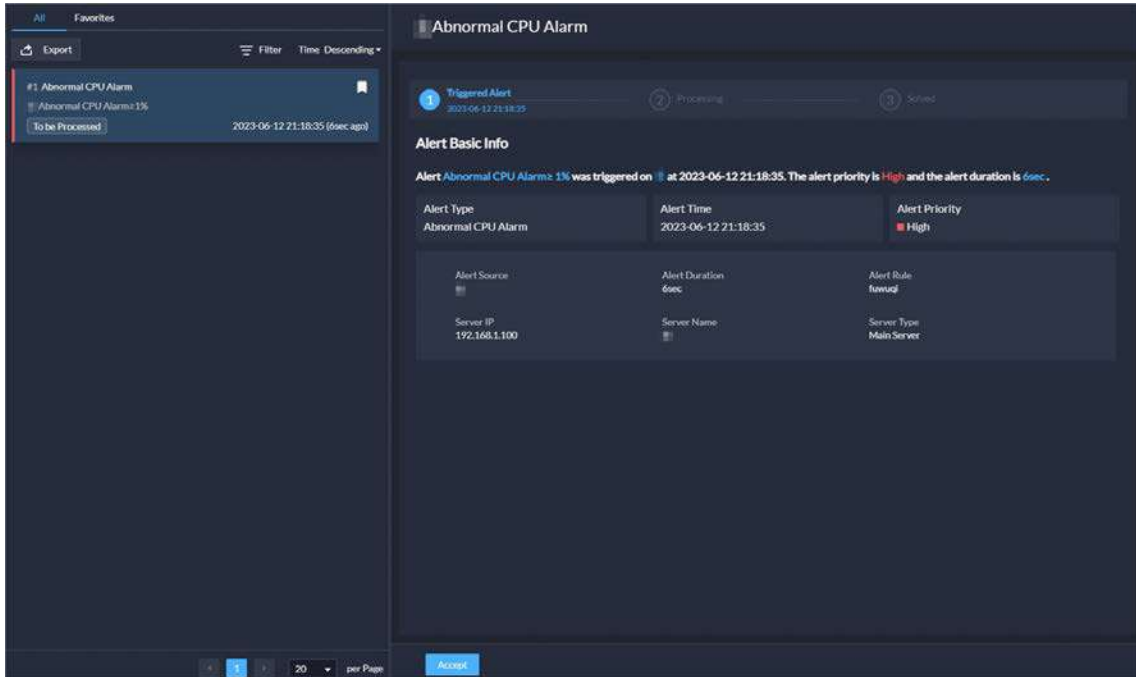
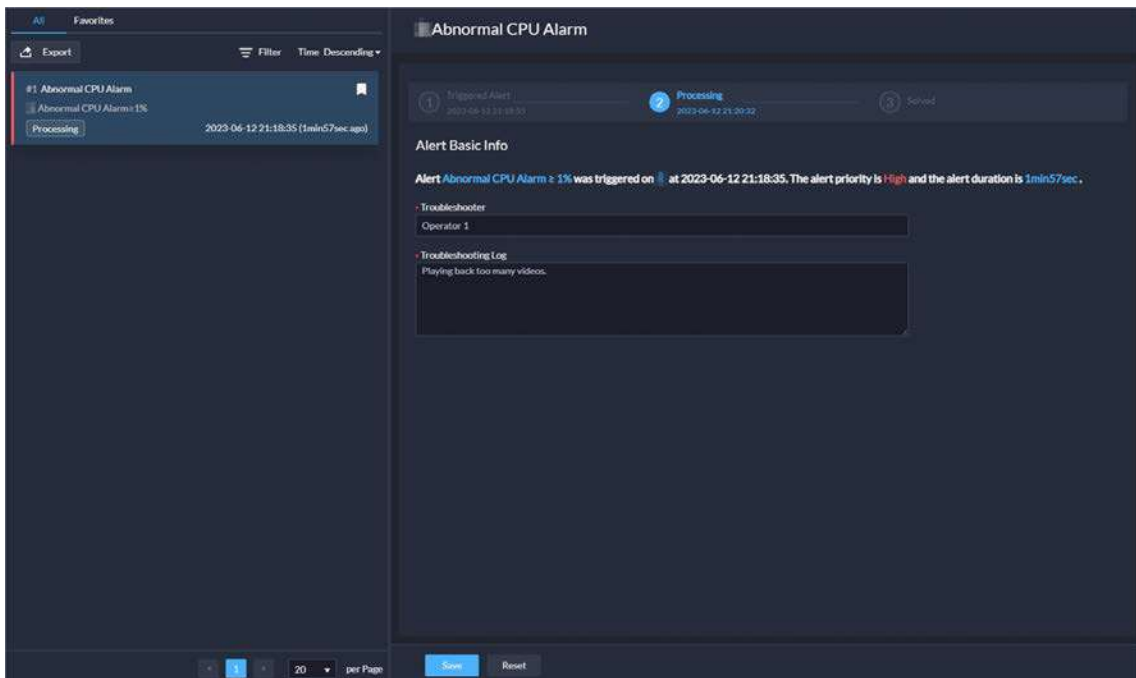
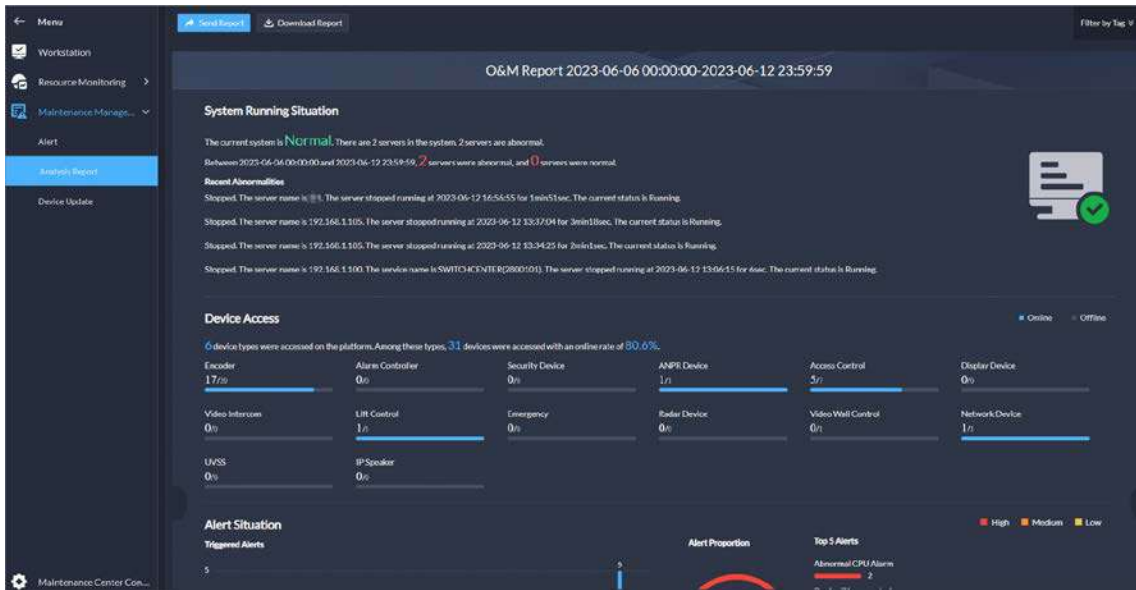


Figure 1-62 Process alerts



- Added analysis report that displays system information, device access status, and alert information. You can customize the report content to be sent to specified email addresses.

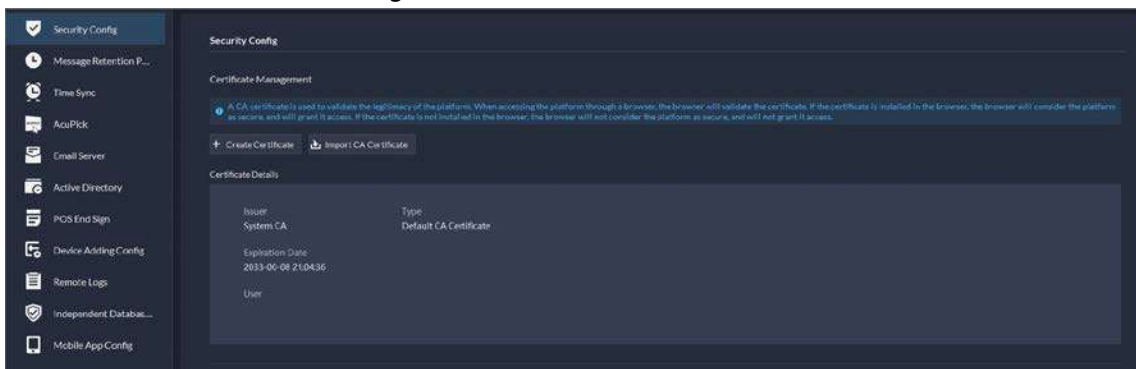
Figure 1-63 Analysis report



1.3.16 System Parameter

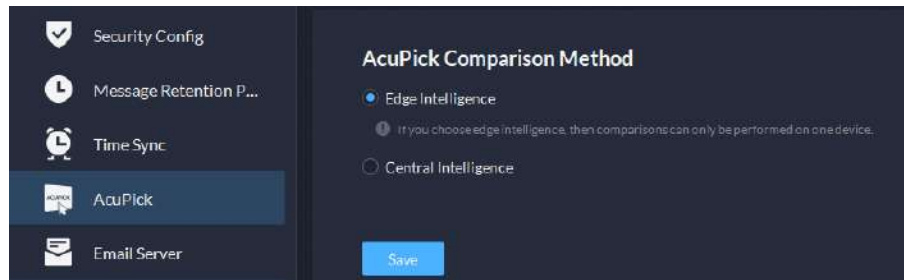
- You can create and import certificates to the platform. A CA certificate is used to validate the legitimacy of the platform. When accessing the platform through a browser, the browser will validate the certificate. If the certificate is installed in the browser, the browser will consider the platform as secure, and will grant it access. If the certificate is not installed in the browser, the browser will not consider the platform as secure, and will not grant it access.

Figure 1-64 CA certificate



- Supports configuring the AcuPick comparison method.
 - ◇ Edge intelligence: You can compare images on only one device.
 - ◇ Central intelligence: You can compare images on multiple devices.

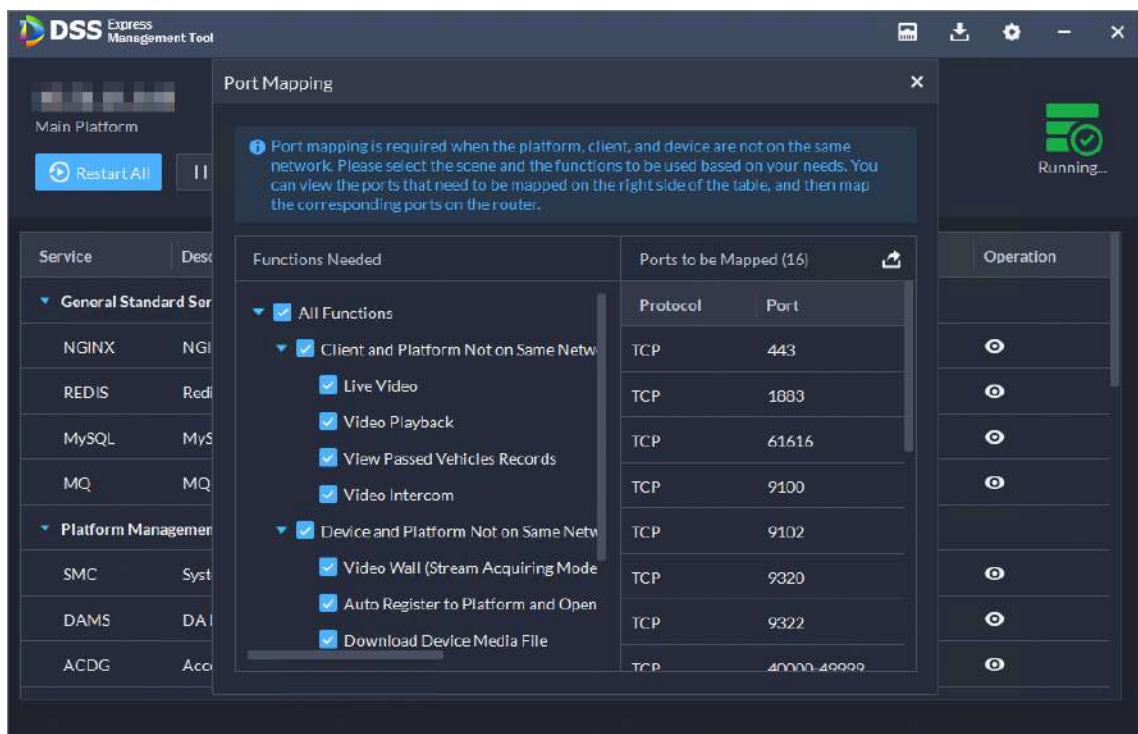
Figure 1-65 AcuPick comparison method



1.3.17 Platform Management Tool

Supports displaying ports that needed to be mapped for different functions in LAN and WAN mapping.

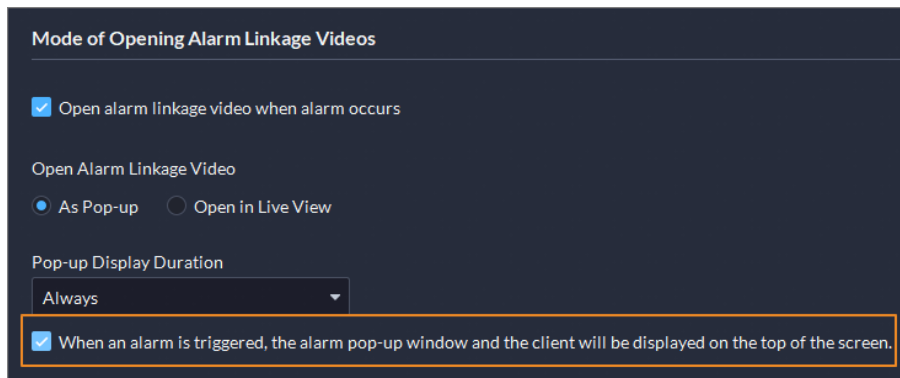
Figure 1-66 View port mapping guide



1.3.18 Local Configuration

Support configuring the alarm pop-up window and client to be displayed on top when an alarm is triggered.

Figure 1-67 Display on top



1.4 Operating System Compatibility Description

OS Name	OS Type	Platform Type	Test Result
Windows Server 2019 Standard (64-bit)	Physical Machine	Server	Pass
Windows 10 20H2 Pro (64-bit)	Physical Machine	Server	Pass
Windows 10 20H2 Pro (64-bit)	Virtual Machine	Server	Pass
Windows Server 2019 Standard (64-bit)	Virtual Machine	Server	Pass
Windows 11 21H2 Pro (64-bit)	Physical Machine	Server	Pass
Windows Server 2022 Standard (64-bit)	Physical Machine	Server	Pass
Windows 10 20H2 Pro (32-bit)	Physical Machine	Client	Pass
Windows 10 20H2 Pro (64-bit)	Physical Machine	Client	Pass
Windows 10 20H2 Pro (64-bit)	Virtual Machine	Client	Pass
Windows Server 2019 Standard (64-bit)	Physical Machine	Client	Pass
Windows 11 21H2 Pro (64-bit)	Physical Machine	Client	Pass
Windows Server 2022 Standard (64-bit)	Physical Machine	Client	Pass

ENABLING A SAFER SOCIETY AND SMARTER LIVING