

ULISSE PTZ CAMERAS AND UNITS, ACCESSORIES



CAMHD30X

ADD-ON CAMERA FULL HD1080P, 30X (4.3-129MM), 60FPS

Day/Night Full HD 30x

Image Device: 1/2.8 type Exmor™ CMOS sensor

Effective pixels: 2.38 megapixel (approximately)

Optical zoom: 30x (360x, with digital zoom)

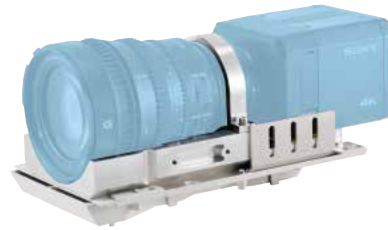


CAMHD30X

UPTBKITVB770

ADAPTER MODULE FOR ULISSE2 AND SONY SNC-VB770 CAMERA WITH SONY SELP28135G LENS

Adapter module in anticorodal aluminium alloy for installation of Sony SNC-VB770 camera with Sony SELP28135G lens on ULISSE2.



UPTBKITVB770

UPTBVTR

ULISSE2 HOUSING UPPER PART WITH ANTI-ICE GLASS AND WIPER

Die cast aluminum body

EAC certification



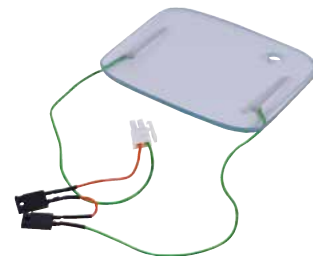
UPTBVTR

OUCHWR

COMPLETE FRONT FLANGE WITH HEATED GLASS FOR ULISSE COMPACT

Helps to maintain the temperature of the external surface of the window above 0°C with the ambient temperature of down to -30°C

Reduces the possibility of ice formation on the external surface of the window and fogging of the window from inside



OUCHWR

UPTHT

REINFORCED HEATER FOR LOW TEMPERATURE APPLICATIONS

UPTHT1 for ULISSE versions with motorized lens down to -30°C (-22°F) Lenses with operating temperatures down to -20°C (-4°F).

UPTHT2 for ULISSE versions with block camera. Operating temperature down to -30°C (-22°F).



UPTHT

UPTIRN

LED ILLUMINATOR

Vandal-proof protection (IK10)
Power supply 24Vac/12-24Vdc
Beam patterns: 10°, 30°, 60°
Wavelengths: 850nm, 940nm, white light
Adjustable light intensity
Adjustable built-in photocell
IP66/IP67



UPTIRN

UPTIRNBKT

SUPPORT FOR MOUNTING OF UPTIRN RANGE OF LED ILLUMINATORS

Support for mounting of UPTIRN range of LED illuminators



UPTIRNBKT

UPTIRPS100N

EXTERNAL POWER SUPPLY FOR ULISSE WITH UPTIRN LED ILLUMINATORS

Power supply: 100Vac, 50/60Hz
Control to synchronise illuminators with camera Day/Night switching
Twilight sensor included
IP66



UPTIRPS100N

UPTIRPS120UL

EXTERNAL POWER SUPPLY FOR ULISSE WITH UPTIRN LED ILLUMINATORS

Power supply: 120Vac, 50/60Hz
Control to synchronise illuminators with camera Day/Night switching
Twilight sensor included
IP66



UPTIRPS120UL

UPTIRPS230N

EXTERNAL POWER SUPPLY FOR ULISSE WITH UPTIRN LED ILLUMINATORS

Power supply: 230Vac, 50/60Hz
Control to synchronise illuminators with camera Day/Night switching
Twilight sensor included
IP66



UPTIRPS230N

UPTJBUL

WEATHERPROOF JUNCTION BOX

For the power supply connection
 External mounting from the ULISSE unit
 IP66



UPTJBUL

WASPT

5 OR 23 LITER TANK WITH PUMP

Polyethylene tank with stainless steel cage
 Delivery head: 5m (16ft), 11m (36ft), 30m (98ft)
 Versions with alarm for the lack of liquid in the tank
 Operating temperature: from -10°C (14°F) up to +60°C (140°F)
 Available voltages: 230Vac, 120Vac, 24Vac
 IP protection degree: IP66 (only products with 5m (16ft) or 11m (36ft) delivery head)



WASHERS AND TANKS

WASNX

WASHER PUMP WITH SOLENOID VALVE FOR STAINLESS STEEL PRODUCTS

Enclosure made of stainless steel AISI 316L
 Delivery head: up to 20m (66ft)
 Water tank capacity: 10l (2.6gal)
 Suitable for Videotec products or with third-party products
 Operating temperature: from -20°C (-4°F) up to +60°C (140°F)
 Available voltages: 230Vac, 120Vac, 24Vac
 IP protection degree (EN60529): IP65 (solenoid valve only, enclosure not rated)



WASNX

TECHNICAL DATA

CAMHD30X

GENERAL

Day/Night Full HD 30x

Image Device: 1/2.8 type Exmor™ CMOS sensor

Effective pixels: 2.38 megapixel (approximately)

Minimum Illumination, color (ICR-OFF):

- 1.4lx, 1/30s, 50 IRE (Normal mode)
- 0.35lx, 1/30s, 50 IRE (High sensitivity mode)
- 0.19lx, 1/3s, 50 IRE (Normal mode)
- 0.05lx, 1/3s, 50 IRE (High sensitivity mode)

Minimum Illumination, B/W (ICR-ON):

- 0.05lx, 1/30s, 50 IRE (Normal mode)
- 0.013lx, 1/30s, 50 IRE (High sensitivity mode)
- 0.002lx, 1/3s, 30 IRE (High sensitivity mode)

Lens: f=4.3 mm (wide) ~ 129.0 mm (tele), from F1.6 to F4.7

Optical zoom: 30x (360x, with digital zoom)

Horizontal Viewing Angle: 63.7° (wide end), 2.3° (tele end)

Minimum object distance: 10mm (wide) ~ 1200mm (tele)

Shutter speed: 1/1 to 1/10000 s, 22 steps

White balance: Auto, ATW, Indoor, Outdoor, Outdoor Auto, Sodium vapor lamp (Fix, Auto, Outdoor Auto), One-push, Manual

Gain: Auto, Manual, Gain Limit (from 3dB up to 43dB, steps: 3dB)

Wide Dynamic Range: On/Off/Visibility enhancer, Light level, Brightness Compensation selection, Compensation level

Focus System: Camera Trigger (Sensitivity: Normal, Low), PTZ Trigger

Exposure: Mode (Auto, Manual, Shutter priority, Iris priority, Brightness priority), Slow AE, Exposure compensation, Maximum gain limit

S/N Ratio: 50dB

Wide-D (wide dynamic range): 130dB

De-fog: On/Off

Speed proportional to Zoom

Zone masking (pan angle or pan/tilt angles)

Electronic stabiliser

Operating temperature (installation inside ULISSE2): up to +65°C (149°F)

Unit weight: 0.75kg (1.65lb)

ENVIRONMENT

For installation indoors

Operating temperature: from -10°C (14°F) up to +65°C (149°F)

CERTIFICATIONS

UR certification

EAC certification

PART NUMBER

CAMHD30X Add-on camera Full HD1080p, 30x (4.3-129mm), 60fps, temperature up to +65°C (149°F)

PACKAGE

Model Number	Weight	Dimensions (WxHxL)	Master carton
CAMHD30X	1.2kg (2.6lb)	14.5x15x27cm (6x6x11in)	-

UPTBKITVB770

MECHANICAL

Material: Anticorodal aluminum alloy

Dimensions: 239.4x96.5x117.5mm (9.4x4.6x3.8in)

Unit weight: 1.1kg (2.2lb)

PART NUMBER

UPTBKITVB770 Adapter module for ULISSE2 and Sony SNC-VB770 camera with Sony SELP28135G lens

PACKAGE

Model Number	Weight	Dimensions (WxHxL)	Master carton
UPTBKITVB770	1.3kg (2.8lb)	26.5x14.5x14.5cm (5.7x10.4x5.7in)	-

UPTBVTR

MECHANICAL

Die cast aluminum body

Epoxy polyester powder painting, RAL9002 colour

Dimensions: 18.8x12.2x47.3cm (7.4x4.8x18.6in)

Unit weight: 2.3kg (5lb)

ENVIRONMENT

For indoors and outdoors installation

Operating temperature: from -40°C (-40°F) up to +65°C (149°F)

CERTIFICATIONS

UR certification

EAC certification

PART NUMBER

UPTBVTR ULISSE2 housing upper part with anti-ice glass and wiper

PACKAGE

Model Number	Weight	Dimensions (WxHxL)	Master carton
UPTBVTR	3.2kg (7.1lb)	29.5x19.5x49cm (11.6x7.7x3.8in)	-

OUCHWR

GENERAL

Helps to maintain the temperature of the external surface of the window above 0°C with the ambient temperature of down to -30°C

Reduces the possibility of ice formation on the external surface of the window and fogging of the window from inside

PART NUMBER

OUCHWR Complete front flange with heated glass for ULISSE COMPACT

UPTHT

GENERAL

Reinforced heater for generic lens/camera (UPTHT1): IN 24Vac, consumption 30W

Reinforced heater for block camera (UPTHT2): IN 24Vac, 30W

Unit weight: 0.1kg (0.2lb) and 0.2kg (0.4lb) (with block camera)

PART NUMBER

UPTHT1 Cold pack for low temperature 24Vac, 30W

UPTHT2 Reinforced heater for block camera 24Vac, 30W

PACKAGE

Model Number	Weight	Dimensions (WxHxL)	Master carton
UPTHT1	0.2kg (0.4lb)	9.5x13.5x19.5cm (3.7x5.3x7.7in)	-
UPTHT2	0.3kg (0.7lb)	9.5x13.5x19.5cm (3.7x5.3x7.7in)	-

UPTIRN

GENERAL

Wavelengths: 850nm, 940nm, white light
Adjustable built-in twilight sensor for automatic activation and deactivation
LED SMD

MECHANICAL

Die cast aluminum body
Dimensions: 187x111x176mm (7.4x4.4x6.9in)
Unit weight: 1.5kg (3.3lb)

ELECTRICAL

Supply voltage/Current consumption:
• from 12Vdc a 24Vdc, 2.5A max
• 24Vac, 2.5A max, 50/60Hz

ENVIRONMENT

For indoors and outdoors installation
Operating temperature: from -40°C (-40°F) a +60°C (140°F)

CERTIFICATIONS

Electrical safety (CE): EN60950-1, EN62368-1, IEC60950-1, IEC62368-1
Electromagnetic compatibility (CE): EN50130-4, IEC CISPR22 (Class A), EN55022 (Class A), FCC Part 15 (Class A)
Outdoor installation (CE): EN60950-22, IEC60950-22
Photobiological safety (CE): EN62471
IP protection degree (EN60529):
• IP66
• IP67
IK protection degree (EN62262):
• IK10
UL certification: cULus Listed (TYPE 4X)
EAC certification

PART NUMBER

UPTIRN108A00	LED illuminator for ULISSE, 10°, 850nm, 24Vac - 12/24Vdc
UPTIRN308A00	LED illuminator for ULISSE, 30°, 850nm, 24Vac - 12/24Vdc
UPTIRN608A00	LED illuminator for ULISSE, 60°, 850nm, 24Vac - 12/24Vdc
UPTIRN109A00	LED illuminator for ULISSE, 10°, 940nm, 24Vac - 12/24Vdc
UPTIRN309A00	LED illuminator for ULISSE, 30°, 940nm, 24Vac - 12/24Vdc
UPTIRN609A00	LED illuminator for ULISSE, 60°, 940nm, 24Vac - 12/24Vdc
UPTIRN10WA00	LED illuminator for ULISSE, 10°, white light, 24Vac - 12/24Vdc
UPTIRN30WA00	LED illuminator for ULISSE, 30°, white light, 24Vac - 12/24Vdc
UPTIRN60WA00	LED illuminator for ULISSE, 60°, white light, 24Vac - 12/24Vdc

GEKO IRN - BEAM PATTERN AND ACHIEVABLE DISTANCES FOR ONE ILLUMINATOR

Horizontal and vertical beam patterns	Maximum distance		
	850nm	940nm	White light
10°	240m (787ft)	140m (460ft)	–
30°	130m (427ft)	80m (262ft)	120m (393ft) ¹
60°	80m (262ft)	60m (197ft)	90m (295ft) ¹

¹ Achievable distances with camera in Day mode (colour image)

The distances and the performance depend on the camera/lens used and on the environmental conditions.

UPTIRNBKT

MECHANICAL

Made of aluminium
Epoxy polyester powder painting, RAL7032 color
Unit weight: 1.8kg (4lb)

CERTIFICATIONS

EAC certification

PART NUMBER

UPTIRNBKT Support for mounting of UPTIRN range of LED illuminators

PACKAGE

Model Number	Weight	Dimensions (WxHxL)	Master carton
UPTIRNBKT	2kg (4.4lb)	36.5x25.5x26cm (14.4x10x10.2in)	-

UPTIRPS100N

MECHANICAL

Aluminum case, color RAL7035
Dimensions: See drawing
Unit weight: 6kg (13.3lb)

ELECTRICAL

IN 100Vac, 50/60Hz - OUT 24Vac, 8A
Consumption: 200W max (powering two spots on maximum power)
Built-in light sensitive switch for automatic ON/OFF operation
Output Day/Night (STATUS): dry contact NO
Cables input section: from 2.5mm² (14AWG) up to 4mm² (12AWG)
Cables signal section: from 0.14mm² (26AWG) up to 0.5mm² (20AWG)

ENVIRONMENT

For indoors and outdoors installation
IP66
Operating temperature: -40°C / +55°C

CERTIFICATIONS

Electrical safety: EN60950-1, EN62368-1, IEC60950-1, IEC62368-1
Electromagnetic compatibility: EN55022 (Class A), FCC Part 15 (Class A)
Immunity: EN50130-4
Outdoor installation: EN60950-22, IEC60950-22
EAC certification

PART NUMBER

UPTIRPS100N External power supply for ULISSE series, prearranged for two LED illuminators, and control to synchronize IR illuminators with camera Day/Night switching, IN 100Vac, in weatherproof box. Twilight sensor included.

PACKAGE

Model Number	Weight	Dimensions (WxHxL)	Master carton
UPTIRPS100N	6kg (13.3lb)	31x31x22cm (12.2x12.2x8.6in)	-

UPTIRPS120UL**MECHANICAL**

Aluminum case, color RAL7035

Dimensions: See drawing

Weight: 6kg (13.3lb)

ELECTRICAL

IN 120Vac, 50/60Hz - OUT 24Vac, 8A

Power consumption: max 200W (feeding two illuminators at full power)

Built-in light sensitive switch for automatic ON/OFF operation

Output Day/Night (STATUS): dry contact NO

Cables input section: from 2.5mm² (14AWG) up to 4mm² (12AWG)

Cables signal section: from 20AWG up to 26AWG

ENVIRONMENT

For indoors and outdoors installation

IP66

Operating temperature: -40°C / +55°C

CERTIFICATIONS

Electrical safety: EN60950-1, EN62368-1, IEC60950-1, IEC62368-1

Electromagnetic compatibility: , EN55022 (Class A), FCC Part 15 (Class A)

Immunity: EN50130-4

Outdoor installation: EN60950-22, IEC60950-22

UL certification: cULus Listed (TYPE 4X) version in 120Vac only

EAC certification

PART NUMBER

UPTIRPS120UL External power supply for ULISSE series, prearranged for two LED illuminators, and control to synchronize IR illuminators with camera Day/Night switching, IN 120Vac, in weatherproof box. Twilight sensor included.

PACKAGE

Model Number	Weight	Dimensions (WxHxL)	Master carton
UPTIRPS120UL	-	-	-

UPTIRPS230N**MECHANICAL**

Aluminum case, color RAL7035

Dimensions: See drawing

Unit weight: 6kg (13.3lb)

ELECTRICAL

IN 230Vac, 50/60Hz - OUT 24Vac, 8A

Consumption: 200W max (powering two spots on maximum power)

Built-in light sensitive switch for automatic ON/OFF operation

Output Day/Night (STATUS): dry contact NO

Cables input section: from 2.5mm² (14AWG) up to 4mm² (12AWG)

Cables signal section: from 0.14mm² (26AWG) up to 0.5mm² (20AWG)

ENVIRONMENT

For indoors and outdoors installation

IP66

Operating temperature: -40°C / +55°C

CERTIFICATIONS

Electrical safety: EN60950-1, EN62368-1, IEC60950-1, IEC62368-1

Electromagnetic compatibility: , EN55022 (Class A), FCC Part 15 (Class A)

Immunity: EN50130-4

Outdoor installation: EN60950-22, IEC60950-22

EAC certification

PART NUMBER

UPTIRPS230N External power supply for ULISSE series, prearranged for two LED illuminators, and control to synchronize IR illuminators with camera Day/Night switching, IN 230Vac, in weatherproof box. Twilight sensor included.

PACKAGE

Model Number	Weight	Dimensions (WxHxL)	Master carton
UPTIRPS230N	6kg (13.3lb)	31x31x22cm (12.2x12.2x8.6in)	-

UPTJBUL

MECHANICAL

Aluminum case, color RAL7035

Dimensions: 192x168x80mm (7.56x6.6x3.1in)

Unit weight: 1.6kg (3.5lb)

ELECTRICAL

Nominal section of the cables used: from 0.75mm² (18AWG) up to 4mm² (12AWG)

ENVIRONMENT

For indoors and outdoors installation

Operating temperature: from -40°C (-40°F) up to +55°C (131°F)

COMPLIANCE

NEMA 4X

CERTIFICATIONS

EAC certification

IP protection degree (EN60529):

- IP66

PART NUMBER

UPTJBUL Junction weatherproof box for cables connexion (according UL norm)

PACKAGE

Model Number	Weight	Dimensions (WxHxL)	Master carton
UPTJBUL	2kg (4.4lb)	35x37x12.5cm (13.7x14.5x4.9in)	-

WASPT

Washer pump, tank of 5l (1.3gal), 5m (16ft) delivery

Polyethylene tank, stainless steel cage

Dimensions (WxHxL): 217x272x257mm (8.5x10.7x10.1in)

Cable glands: 1xM20 + 3xM16

Unit weight: 3.8kg (8.4lb)

Water tank capacity: 5l (1.3gal)

Delivery head: 5m (16ft) max

Tube length: 5m (16ft)

Supply voltage/Current consumption:

- 230Vac, 0.3A, 50/60Hz
- 120Vac, 0.6A, 50/60Hz
- 24Vac, 1.8A, 50/60Hz

Operating temperature

- Maximum temperature: 60°C (140°F)
- Minimum temperature with antifreeze liquid in solution: -10°C (14°F)
- Minimum temperature with antifreeze liquid in solution (reduced performance and delivery height): -25°C (-13°F)

Electrical safety (CE): EN60950-1, EN62368-1

Electromagnetic compatibility (CE): EN50130-4, EN61000-6-3, EN55032 (Class B), FCC Part 15 (Class B)

Outdoor installation (CE): EN60950-22

IP protection degree (EN60529):

- IP66

EAC certification

Washer pump, tank of 23l (6gal), 5m (16ft) delivery

Polyethylene tank, stainless steel cage

Dimensions (WxHxL): 301x410x348mm (11.8x16.1x13.7in)

Cable glands: 1xM20 + 3xM16

Unit weight: 5.5kg (12.1lb)

Water tank capacity: 23l (6gal)

Delivery head: 5m (16ft) max

Tube length: 5m (16ft)

Supply voltage/Current consumption:

- 230Vac, 0.3A, 50/60Hz
- 120Vac, 0.6A, 50/60Hz
- 24Vac, 1.8A, 50/60Hz

Operating temperature

- Maximum temperature: 60°C (140°F)
- Minimum temperature with antifreeze liquid in solution: -10°C (14°F)
- Minimum temperature with antifreeze liquid in solution (reduced performance and delivery height): -25°C (-13°F)

Electrical safety (CE): EN60950-1, EN62368-1

Electromagnetic compatibility (CE): EN50130-4, EN61000-6-3, EN55032 (Class B), FCC Part 15 (Class B)

Outdoor installation (CE): EN60950-22

IP protection degree (EN60529):

- IP66

EAC certification

Washer pump, tank of 23l (6gal), 11m (36ft) delivery

Polyethylene tank, stainless steel cage

Dimensions (WxHxL): 301x410x348mm (11.8x16.1x13.7in)

Cable glands: 1xM20 + 3xM16

Unit weight: 6.7kg (14.8lb)

Switch for liquid level

Water tank capacity: 23l (6gal)

Delivery head: 11m (36ft) max

Tube length: 11m (36ft)

Supply voltage/Current consumption:

- 230Vac, 0.5A, 50/60Hz
- 120Vac, 1A, 50/60Hz
- 24Vac, 3.8A, 50/60Hz

Alarm outputs:

- Auto-powered: 1
- Dry contact: 1

Operating temperature

- Maximum temperature: 60°C (140°F)
- Minimum temperature with antifreeze liquid in solution: -10°C (14°F)
- Minimum temperature with antifreeze liquid in solution (reduced performance and delivery height): -25°C (-13°F)

Electrical safety (CE): EN60950-1, EN62368-1

Electromagnetic compatibility (CE): EN50130-4, EN61000-6-3, EN55032, (Class B), FCC Part 15 (Class B)

Outdoor installation (CE): EN60950-22

IP protection degree (EN60529):

- IP66

EAC certification

Marine Certification: Lloyd's Register Marine Type Approval (only for the 11m (36ft) version in the WASPT series)

Washer pump, tank of 23l (6gal), 30m (98ft) delivery

Polyethylene tank, stainless steel cage

Dimensions (WxHxL): 301x620x348mm (11.9x24.4x13.7in)

Cable glands: 1xM20 + 3xM16

Unit weight: 15.1kg (33.3lb)

Water tank capacity: 23l (6gal)

Delivery head: 30m (98ft) max

Tube length: 30m (98ft)

Switch for liquid level

Supply voltage/Current consumption:

- 230Vac, 2A, 50/60Hz
- 120Vac, 4.5A, 60Hz

Alarm outputs:

- Auto-powered: 1
- Dry contact: 1

Operating temperature

- Maximum temperature: 60°C (140°F)
- Minimum temperature with antifreeze liquid in solution: -10°C (14°F)

Electrical safety (CE): EN60950-1, EN62368-1

Electromagnetic compatibility (CE): EN50130-4, EN61000-6-3, EN55032, (Class B), FCC Part 15 (Class B)

IP protection degree (EN60529):

- IPX4

EAC certification

DTWRX

Board for remote control of wiper and washer pump with WASPT

2 functions: WIPER, WASHER

31 selectable addresses through DIP switch

Serial input RS-485

2 status LED: Stand-by and receiver control

Dimensions: 43x56x13mm (1.7x2.2x0.51in)

Unit weight: 0.02kg (0.04lb)

Power consumption: 0.5W

Half duplex RS-485 serial interface for keypad telemetry data reception (maximum distance 1200m/3937ft) and from SM matrix range (maximum distance 1200m/3937ft)

Protocols:

- PELCO D (2400, 9600 baud)
- VIDEOTEC MACRO (9600, 38400 baud)

Operating temperature: from -25°C up to +60°C

Electrical safety (CE): EN60950-1, EN62368-1

Electromagnetic compatibility (CE): EN50130-4, EN61000-6-3, FCC Part 15 (Class B)

EAC certification

PART NUMBER

WASPT0V5L5M00	Water tank 5l (1.3gal), pump with delivery up to 5m (16ft), IN 230Vac-24Vac-120Vac
WASPT0V23L5M00	Water tank 23l (6gal), pump with delivery up to 5m (16ft), IN 230Vac-24Vac-120Vac
WASPT0V23L11M00	Water tank 23l (6gal), pump with delivery up to 11m (36ft) with water floating, IN 230Vac-24Vac-120Vac
WASPT1V23L30M00	Water tank 23l (6gal), pump with delivery up to 30m (98ft) with water floating, IN 230Vac
WASPT3V23L30M00	Water tank 23l (6gal), pump with delivery up to 30m (98ft) with water floating, IN 120Vac

ACCESSORIES

DTWRX	Data receiver for remote control of the wiper and WASPT range pumps in stand-alone housings
-------	---

PACKAGE

Model Number	Weight	Dimensions (WxHxL)	Master carton
WASPT0V5L5M00	4.3kg (9.5lb)	31x31x22cm (12.2x12.2x8.6in)	-
WASPT0V23L5M00	6.4kg (14lb)	32x37.5x51cm (12.5x14.7x20in)	-
WASPT0V23L11M00	7.5kg (16.5lb)	32x37.5x51cm (12.5x14.7x20in)	-
WASPT1V23L30M00	15.4kg (34lb)	38x22x79cm (15x8.6x31in)	-

WASNX

MECHANICAL

Enclosure made of stainless steel AISI 316L

Delivery pipe supplied

- Length: 20m (66ft)

Pressure: 4bar max

Delivery head: 20m (66ft)

Material (delivery pipe): Antistatic plastic

Dimensions (WxHxL): 429x697x255mm (16.9x27.4x10in)

Unit weight: 18kg (40lb)

Water tank capacity: 10l (2.6gal)

ELECTRICAL

Supply voltage/Current consumption

- 230Vac, 0.07A, 50/60Hz
- 120Vac, 0.13A, 50/60Hz
- 24Vac, 0.7A, 50/60Hz

ENVIRONMENT

For indoors and outdoors installation

Operating temperature of solenoid valve: from -20°C (-4°F) up to +60°C (140°F)

Operating temperature of device: depending on the solidification temperature of the liquid

CERTIFICATIONS

Electrical safety (CE): EN60950-1, EN62368-1

Electromagnetic compatibility (CE): EN61000-6-2, EN61000-6-3

Outdoor installation (CE): EN60950-22

IP protection degree (EN60529):

- IP65 (solenoid valve only, enclosure not rated)

EAC certification

PART NUMBER

WASN1V10L20M00 Tank 10l (2.6gal) with integrated manual pump controlled by solenoid valve, delivery head up to 20m (66ft) max, IN 230Vac

WASN2V10L20M00 Tank 10l (2.6gal) with integrated manual pump controlled by solenoid valve, delivery head up to 20m (66ft) max, IN 24Vac

WASN3V10L20M00 Tank 10l (2.6gal) with integrated manual pump controlled by solenoid valve, delivery head up to 20m (66ft) max, IN 120Vac

SPARE PARTS

OWEXTANK Pump in stainless steel, 10l (2.6gal)

OWEXTUB Water pipe, 20m (66ft)

BRACKETS AND ADAPTORS

NXC0L AISI 316L stainless steel pole adapter module

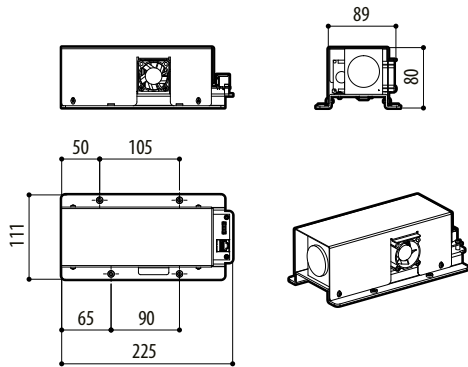
NXCW AISI 316L stainless steel corner adapter module

PACKAGE

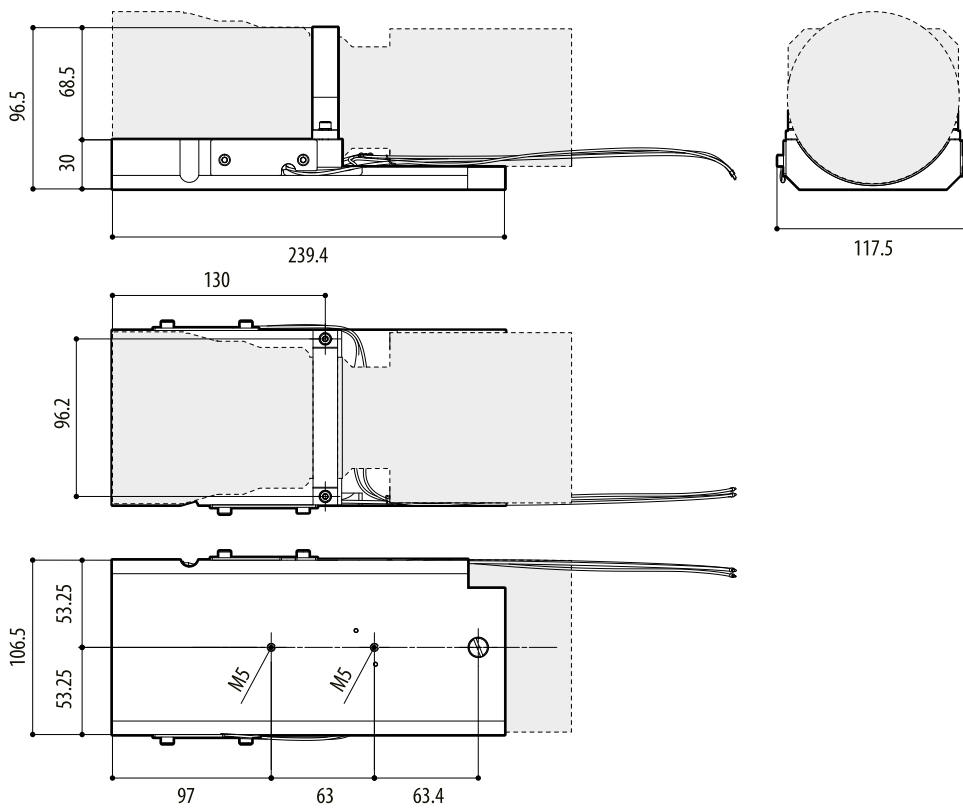
Model Number	Weight	Dimensions (WxHxL)	Master carton
WASN1V10L20M00	20.3kg (44.7lb)	30x74x46cm (11.8x29.1x18.1in)	-
WASN2V10L20M00	20.3kg (44.7lb)	30x74x46cm (11.8x29.1x18.1in)	-
WASN3V10L20M00	20.3kg (44.7lb)	30x74x46cm (11.8x29.1x18.1in)	-

TECHNICAL DRAWINGS

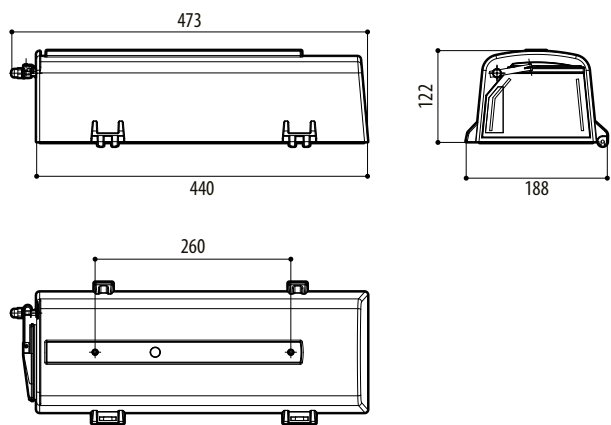
The indicated measurements are expressed in millimetres.



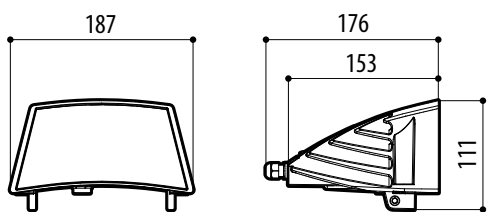
CAMHD30X



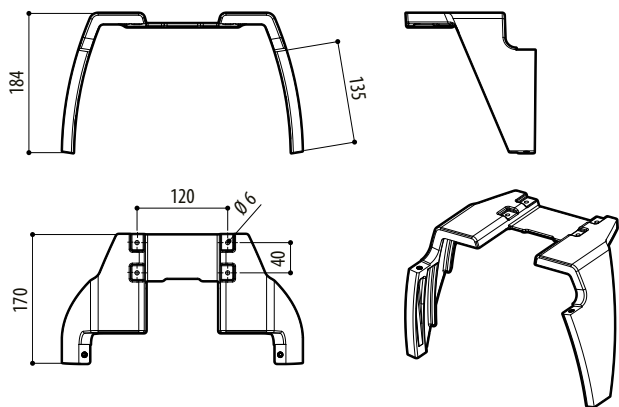
UPTBKITVB770



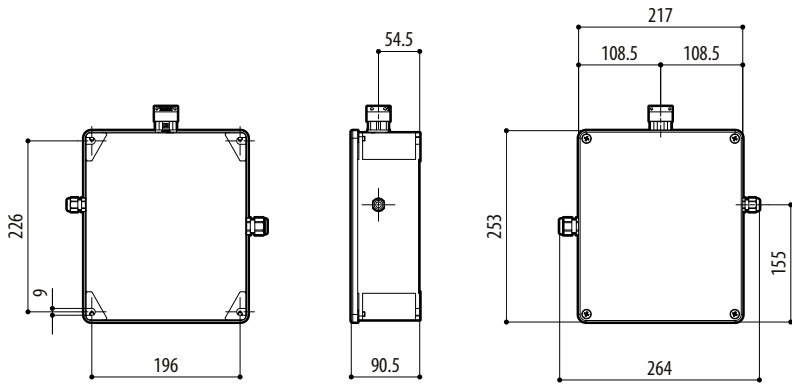
UPTBVTR



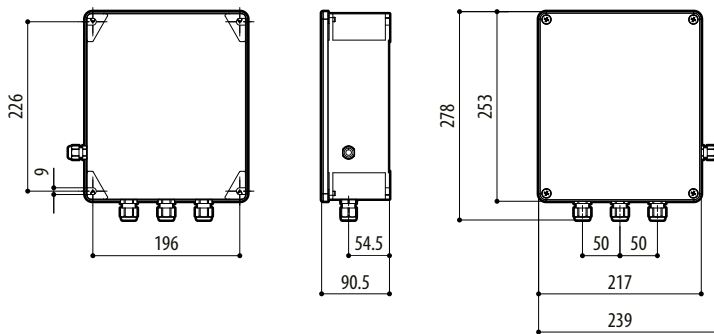
UPTIRN



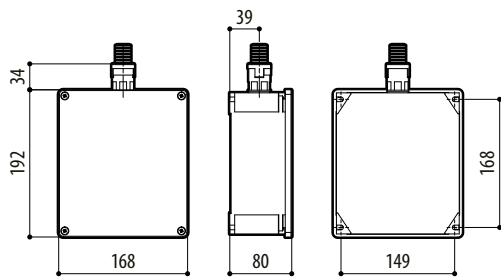
UPTIRNBKT



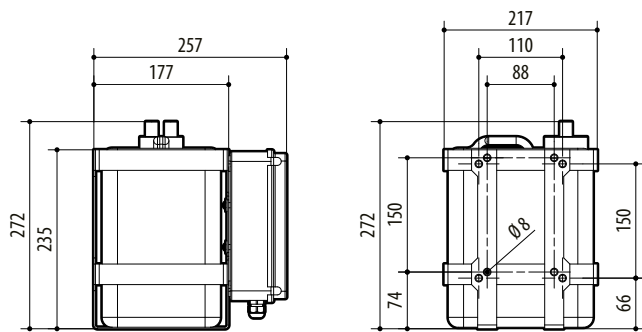
UPTIRPS120UL



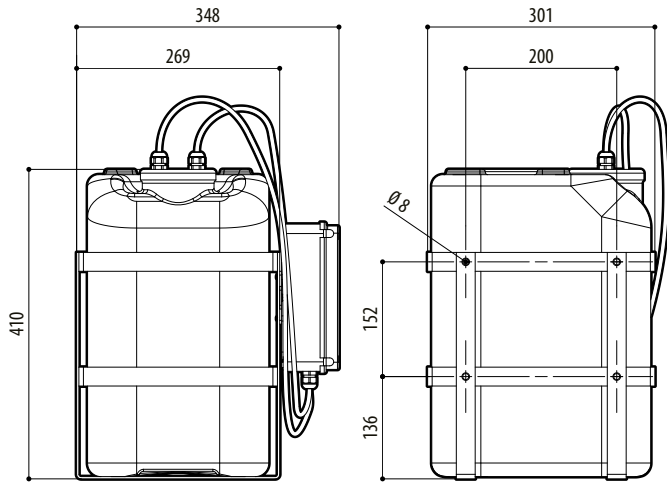
UPTIRPS230N -- UPTIRPS100N



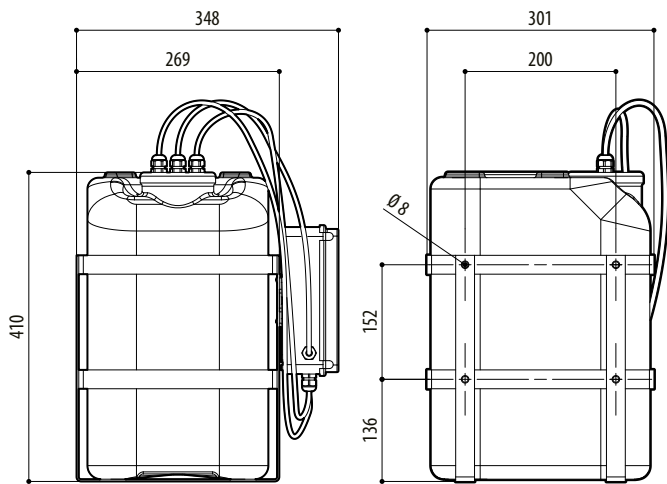
UPTJBUL



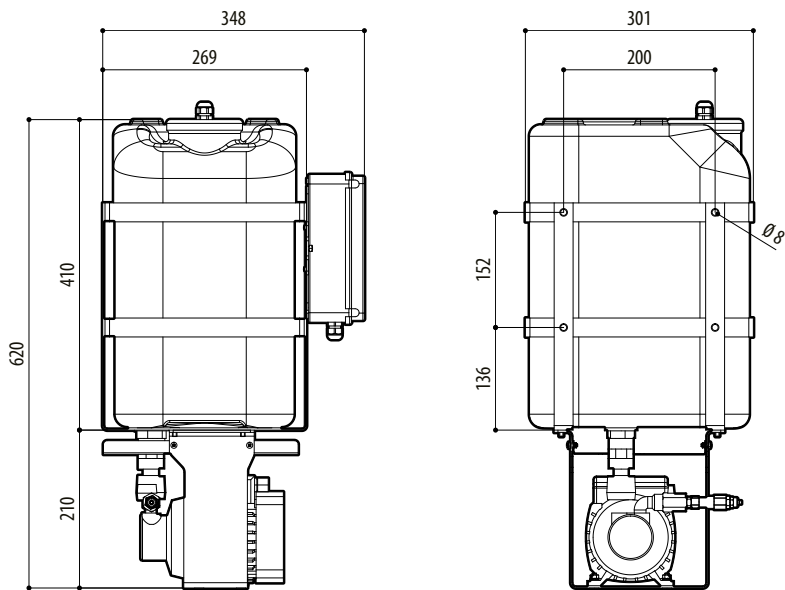
WATER TANK 5L (1.3GAL), 5M (16FT) DELIVERY



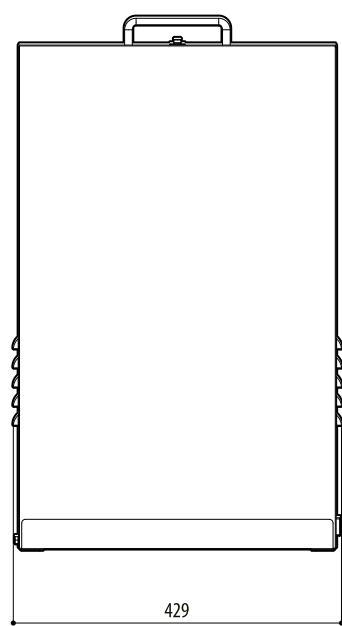
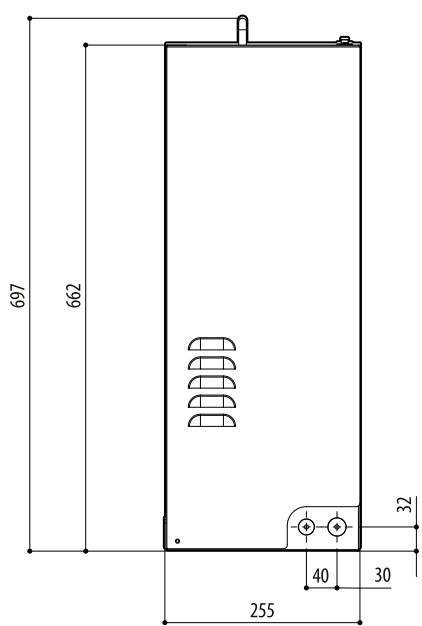
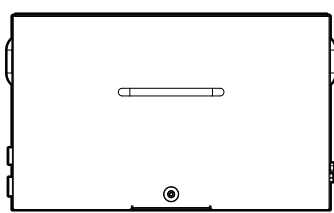
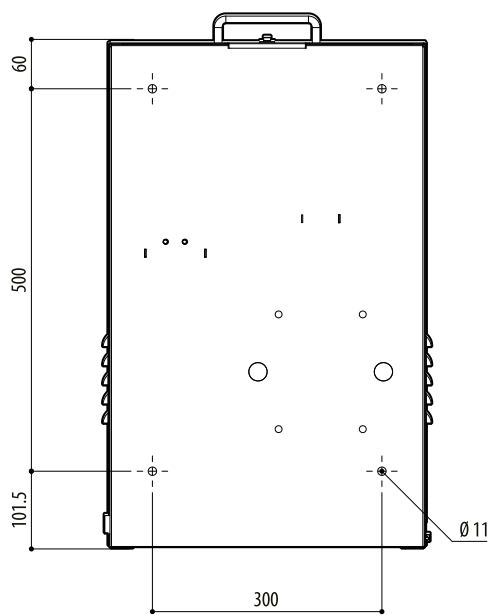
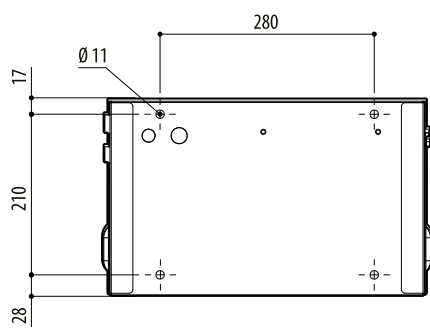
WATER TANK 23L (6GAL), 5M (16FT) DELIVERY



WATER TANK 23L (6GAL), 11M (36FT) DELIVERY



WATER TANK 23L (6GAL), 30M (98FT) DELIVERY



WASN