

**Introduction**

exacqVision Edge is a variation of the standard exacqVision Server application that operates on a compatible Vivotek camera. It can record video from the local camera directly to the SD memory card in the camera or remote drives. The exacqVision Client application can connect to any combination of Edge and standard servers simultaneously.

To see a list of supported Edge cameras please follow this link: <https://exacq.com/products/edge/?tab=5>

**Requirements**

- A one-channel license from Exacq Technologies must be obtained for each Edge-enabled camera. (A standard Edge license part number is EDGE, and an Edge Plus license part number is EDGEPlus.)
- The camera must be running a version of firmware that supports Vivotek VADP applications. Supported firmware varies between the camera models. Contact Vivotek for more information.
- An SDHC class 10 or better SD memory card, purchased separately, is required for each camera. (See manufacturer’s documentation for maximum supported SD Card size).

**NOTE:** Up to 2GB is reserved for exacqVision Edge operations and cannot be used for exacqVision Edge data storage.

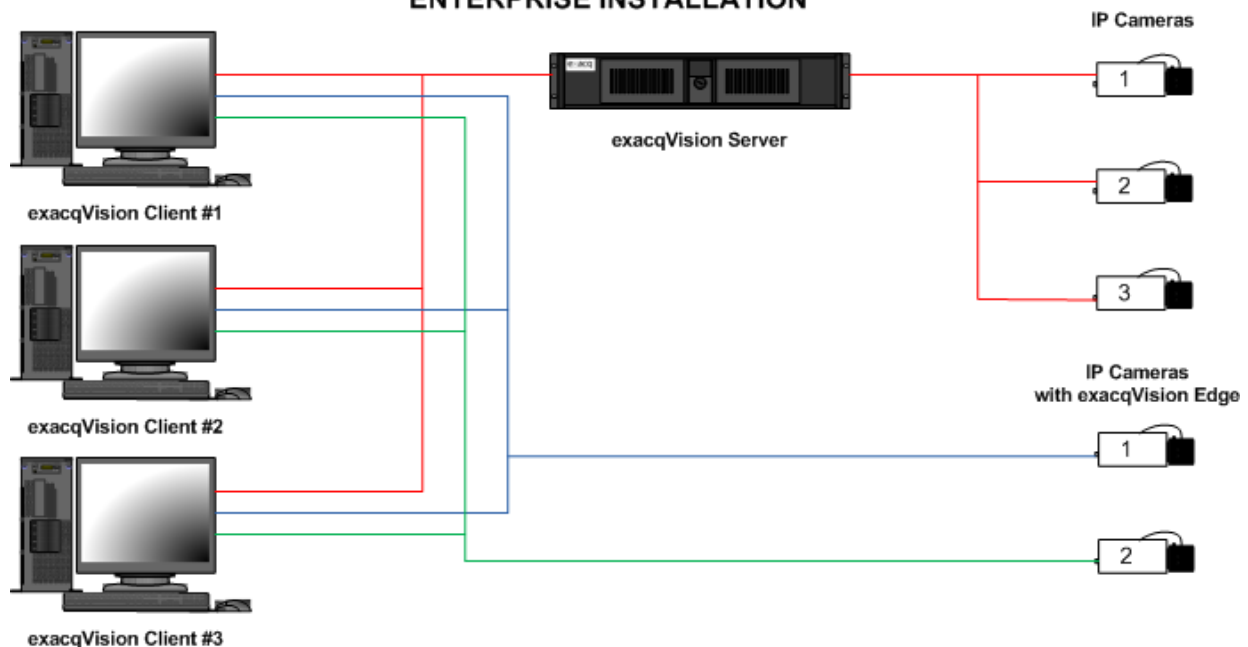
- A separate web server computer running the exacqVision Web Service application is required for mobile or web clients connecting to Edge servers.

**Block Diagram**

**STANDALONE INSTALLATION**



**ENTERPRISE INSTALLATION**



## Installation and Configuration

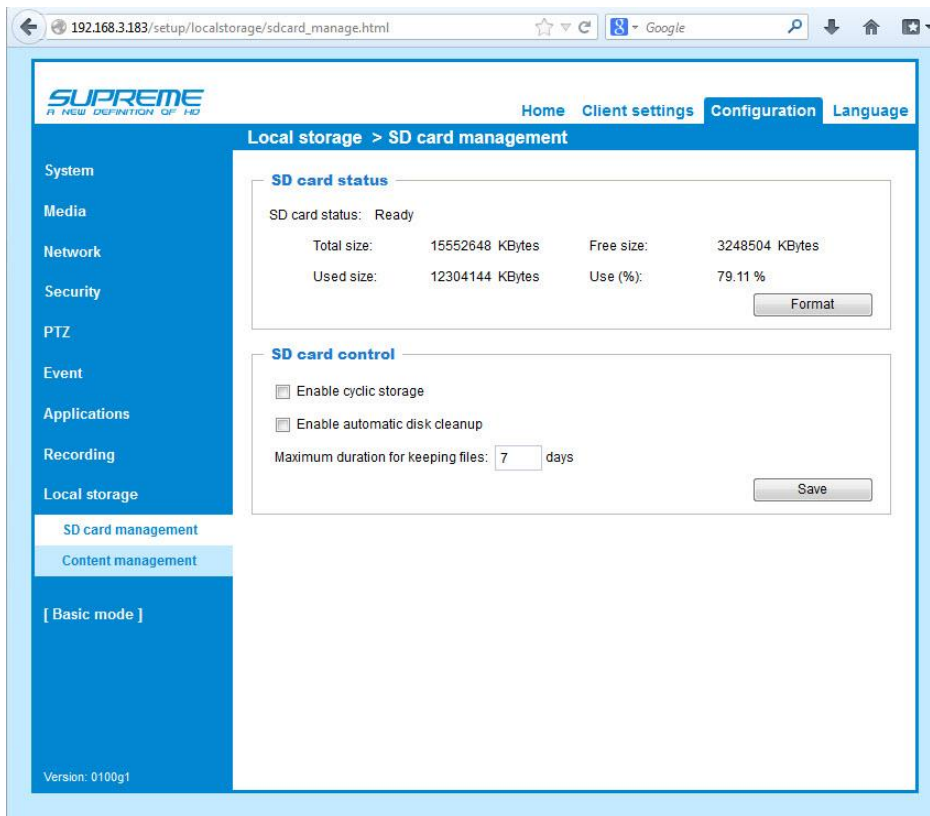
**CAUTION:** Do not record from an IP camera on more than one exacqVision server at a time, regardless of where exacqVision Server is running.

**NOTE:** If the camera has installed applications please delete them before continuing with the installation of Edge. If existing applications are left installed, then key features of exacqVision may not work correctly once installed. Applications can be re-installed once Edge has been installed successfully.

1. Install the Vivotek camera and insert the SD memory card in the camera.

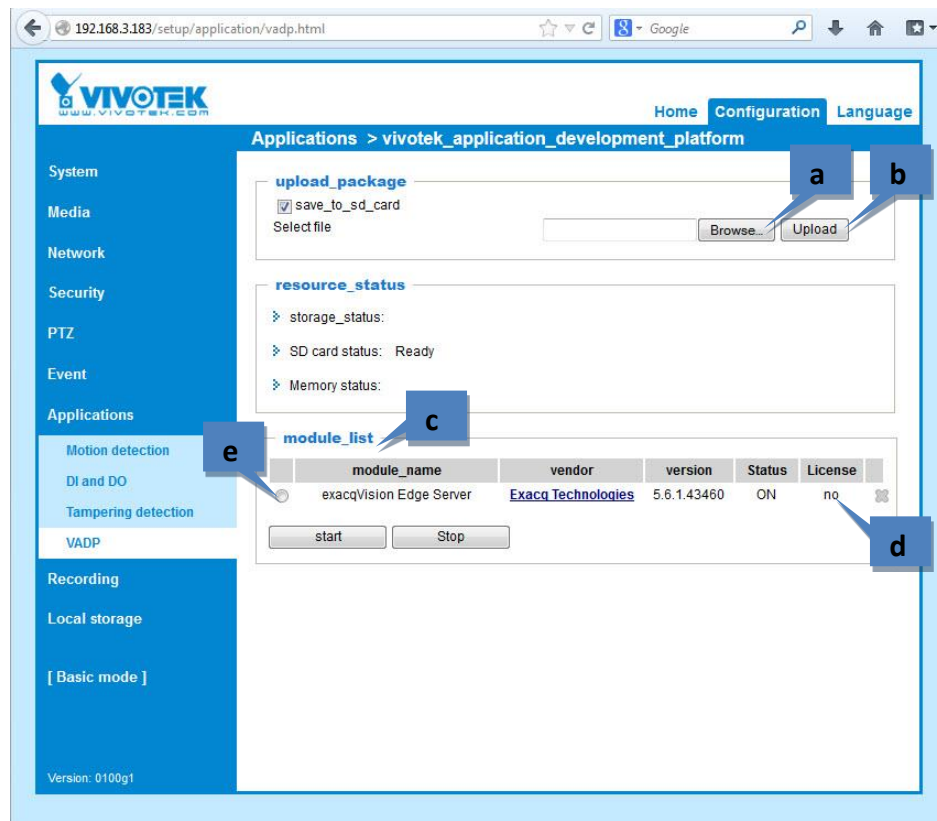
**NOTE:** SD cards are normally pre-formatted to the FAT32 file system and automatically mounted when inserted. However, you can re-format the card using the camera, if desired, by following the instructions provided by Vivotek.

2. Configure the camera's network parameters to communicate with a PC-based browser using the Vivotek Setup Wizard found on the CD shipped with the camera, or downloaded from the Vivotek website.
3. If necessary, upgrade the camera firmware to the latest version from the Vivotek website.
4. Download the latest exacqVision Client application from the Exacq website at [www.exacq.com/support/downloads.html](http://www.exacq.com/support/downloads.html).
5. Install the client software on your computer.
6. Download the latest exacqVision Edge server application from <https://www.exacq.com/support/downloads.html>.
7. Open a browser to the camera and log in. The default username and password are **root** and **pass**.
8. Select **Advanced Mode**. If you do not see Advanced Mode, but you do see Basic Mode, you are already in Advanced Mode.
9. Under **Local Storage**, select SD Card Maintenance.

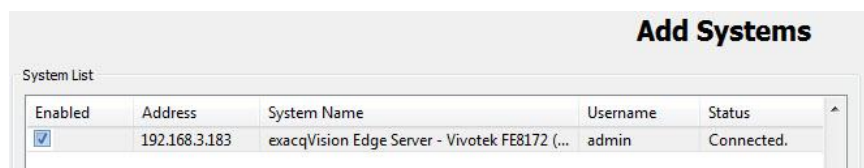


10. Ensure the Total Size is greater than zero, which means the camera is communicating with the SD card.

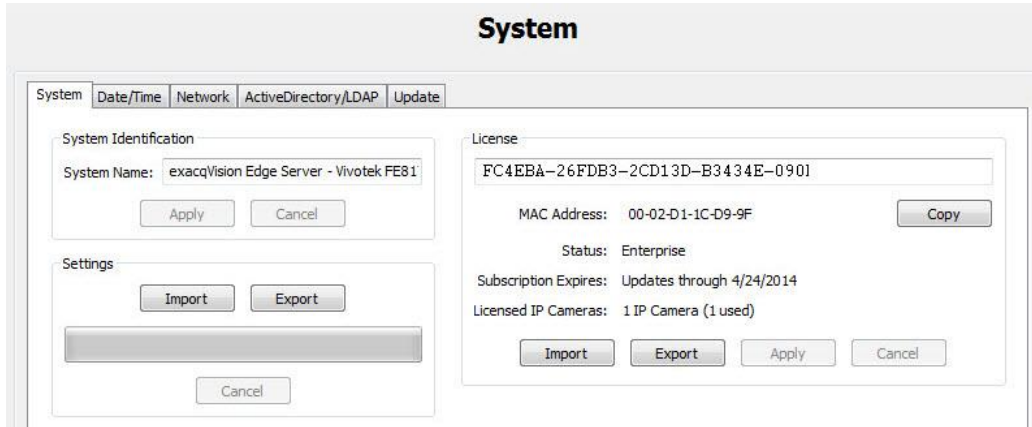
11. Under **Applications**, select **VADP**. Complete the following steps on the VADP page, as shown in the following illustration:
  - a. Select Browse and then locate the .gz file downloaded in step 6.
  - b. Select Upload. It may take up to five minutes for the package to load and install.
    - a. **NOTE:** If you encounter the popup message “Warning: verify vadp package signature failed!”, you can safely ignore this message and continue.
  - c. After successfully installing exacqVision Edge, exacqVision Server is displayed under **module\_list**.
  - d. The License column lists “no” because exacqVision software is licensed separately.
  - e. Select exacqVision Server and click Start. The Status should now be “Running.” Note that after the first installation, or after the SD card is replaced, up to five minutes could elapse before the server software is ready to connect.



12. In the local exacqVision Client, add the remote Edge server on the **Add System** page using the default **exacqVision Server** username (**admin**) and password (**admin256**). This allows the local client on your computer to communicate with the Edge server on the camera. When complete, the server’s status is displayed as Connected.



13. Add the exacqVision camera license to the camera's server on the System page. When complete, the status is displayed as Licensed.



14. On the IP Cameras page, verify that the camera is associated with its Edge server:

- The IP address must be 127.0.0.1 so that the Edge server communicates with the local camera.
- The camera's credentials are **root** and **pass** by default.
- The status is displayed as Connected when complete.

**Add IP Cameras**

IP Camera List

Enabled	Address	Type ▲	Model	MAC	Firmware	Status
<input checked="" type="checkbox"/>	127.0.0.1	Vivotek	FE8172V	00-02-D1-1C-D9-9F	FE8172-VVTK-0100g1	Connecti

15. See the exacqVision user manual for additional configuration steps, such as configuring recording settings.

## Troubleshooting

If you encounter a write error, complete the following steps:

1. Stop the exacqVision Edge server on the camera's Applications/VADP page.
2. Unmount the SD card on the Local Storage/SD Card Management page.
3. Check the SD card. If necessary, repair and format the card.
4. Remount the SD card.
5. Restart the exacqVision Edge server on the camera's Applications/VADP page.